

UK Office

Everest Biotech Ltd

Cherwell Innovation Centre
77 Heyford Park
Upper Heyford
Oxfordshire
OX25 5HD
UK

Enquiries:

info@everestbiotech.com

Sales:

sales@everestbiotech.com

Tech support:

support@everestbiotech.com

Tel: +44 (0)1869 238326

www.everestbiotech.com

**Research Use Only. Not for
diagnostic or therapeutic use.**

EB09415 - Goat Anti-XPNPEP1 Antibody

Size: 100µg specific antibody in 200µl



Target Protein

Principal Names: XPNPEP1, X-prolyl aminopeptidase (aminopeptidase P) 1, soluble, SAMP, XPNPEP, XPNPEPL, XPNPEPL1, OTTHUMP00000020457, OTTHUMP00000058856, X-prolyl aminopeptidase (aminopeptidase P) 1, soluble (SAMP, XPNPEP, XPNPEPL), X-prolyl aminopeptidase (aminopeptidase P)-like

Official Symbol: XPNPEP1

Accession Number(s): NP_065116.2; NP_001161076.1

Human GeneID(s): [7511](#)

Non-Human GeneID(s): 170750 (mouse), 170751 (rat)

Important Comments: This antibody is expected to recognize isoform 1 and 2 (NP_065116.2; NP_001161076.1).

Immunogen

Peptide with sequence C-LIRETQPISKQH, from the C Terminus of the protein sequence according to NP_065116.2; NP_001161076.1.

Please note the [peptide](#) is available for sale.

Purification and Storage

Purified from goat serum by ammonium sulphate precipitation followed by antigen affinity chromatography using the immunizing peptide.

Supplied at 0.5 mg/ml in Tris saline, 0.02% sodium azide, pH7.3 with 0.5% bovine serum albumin.

Aliquot and store at -20°C. Minimize freezing and thawing.

Applications Tested

Peptide ELISA: antibody detection limit dilution 1:32000.

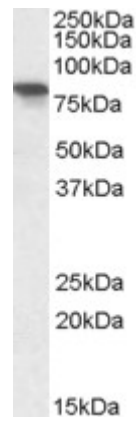
Western blot: Approx 80kDa band observed in Human Heart, Skeletal Muscle and Pancreas lysates and 75kDa band observed in Mouse and Rat Small Intestines, and 75kDa band observed in Pig Pancreas lysate (calculated MW of 69.9kDa according to NP_065116.2). Recommended concentration: 0.1-0.3µg/ml. Primary incubation was 1 hour.

IHC: Paraffin embedded Human Pancreas. Recommended concentration: 5µg/ml.

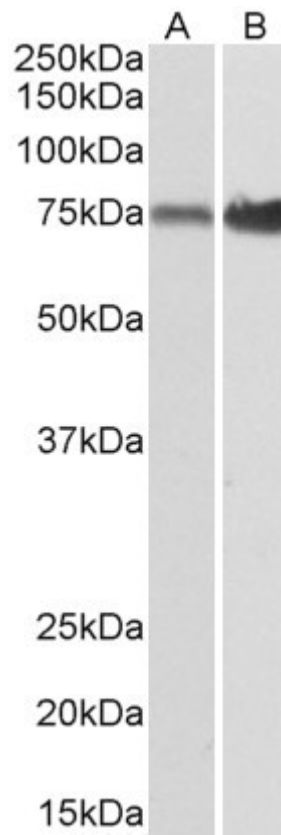
Species Reactivity

Tested: Human, Mouse, Rat, Pig

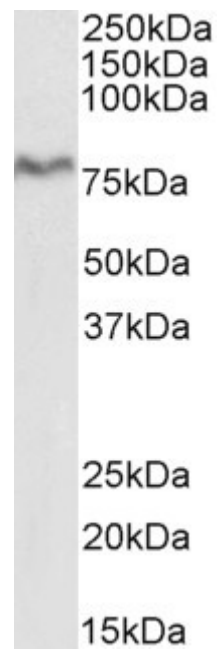
Expected from sequence similarity: Human, Mouse, Rat, Cow, Pig, Dog



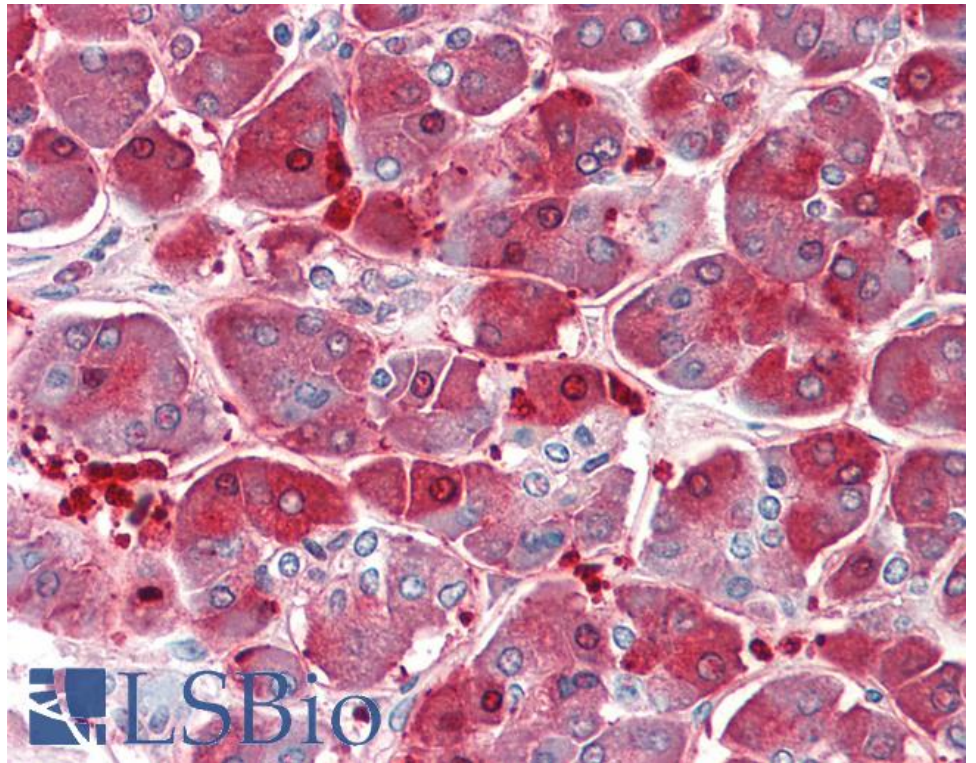
EB09415 (0.3µg/ml) staining of Human Pancreas lysate (35µg protein in RIPA buffer). Detected by chemiluminescence.



EB09415 (0.1µg/ml) staining of Mouse (A) and Rat (B) Small Intestine lysates (35µg protein in RIPA buffer). Detected by chemiluminescence.



EB09415 (0.1 μ g/ml) staining of Pig Pancreas lysate (35 μ g protein in RIPA buffer). Detected by chemiluminescence.



EB09415 (5 μ g/ml) staining of paraffin embedded Human Pancreas. Steamed antigen retrieval with citrate buffer pH 6, AP-staining.