

UK Office

Everest Biotech Ltd

Cherwell Innovation Centre
77 Heyford Park
Upper Heyford
Oxfordshire
OX25 5HD
UK

Enquiries:

info@everestbiotech.com

Sales:

sales@everestbiotech.com

Tech support:

support@everestbiotech.com

Tel: +44 (0)1869 238326

www.everestbiotech.com

**Research Use Only. Not for
diagnostic or therapeutic use.**

EB08178 - Goat Anti-WISP1 Antibody

Size: 100µg specific antibody in 200µl



Target Protein

Principal Names: WISP1, WNT1 inducible signaling pathway protein 1, CCN4, WISP1c, WISP1i, WISP1tc, WNT1 induced secreted protein 1, Wnt-1 inducible signaling pathway protein 1, wnt-1 signaling pathway protein 1

Official Symbol: WISP1

Accession Number(s): NP_003873.1; NP_543028.1

Human GeneID(s): [8840](#)

Non-Human GeneID(s): 22402 (mouse), 65154 (rat)

Important Comments: This antibody is expected to recognize both reported isoforms (NP_003873.1; NP_543028.1).

Immunogen

Peptide with sequence C-ESYPDFSEIAN, from the C Terminus of the protein sequence according to NP_003873.1; NP_543028.1.

Please note the [peptide](#) is available for sale.

Purification and Storage

Purified from goat serum by ammonium sulphate precipitation followed by antigen affinity chromatography using the immunizing peptide.

Supplied at 0.5 mg/ml in Tris saline, 0.02% sodium azide, pH7.3 with 0.5% bovine serum albumin.

Aliquot and store at -20°C. Minimize freezing and thawing.

Applications Tested

Peptide ELISA: antibody detection limit dilution 1:128000.

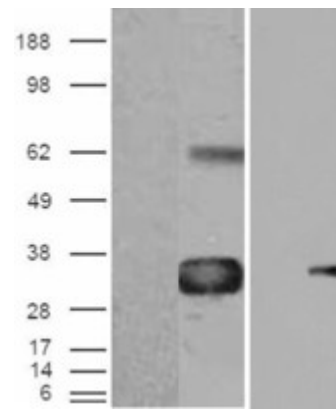
Western blot: In transfected HEK293 transiently expressing WISP1 a band of approx. 35kDa is observed. This band is not observed in the non-transfected HEK293.

Recommended concentration: 0.1-0.3µg/ml.

Species Reactivity

Tested: Human

Expected from sequence similarity: Human, Mouse, Rat,



HEK293 overexpressing WISP1 (RC214390) with C-terminal tag (DYKDDDDK) and probed with anti-DYKDDDDK in the left panel and with EB08178 in the right panel (mock transfection in first lane in each panel), tested by Origene.