

## UK Office

### Everest Biotech Ltd

Cherwell Innovation Centre  
77 Heyford Park  
Upper Heyford  
Oxfordshire  
OX25 5HD  
UK

Enquiries:

[info@everestbiotech.com](mailto:info@everestbiotech.com)

Sales:

[sales@everestbiotech.com](mailto:sales@everestbiotech.com)

Tech support:

[support@everestbiotech.com](mailto:support@everestbiotech.com)

Tel: +44 (0)1869 238326

[www.everestbiotech.com](http://www.everestbiotech.com)

**Research Use Only. Not for  
diagnostic or therapeutic use.**

## EB07332 - Goat Anti-Wilms tumor 1 / WT1 Antibody

Size: 100µg specific antibody in 200µl



### Target Protein

**Principal Names:** WT1, Wilms tumor 1, GUD, WAGR, WIT-2, WT33

**Official Symbol:** WT1

**Accession Number(s):** NP\_000369.3; NP\_077742.2; NP\_077743.2; NP\_077744.3

**Human GeneID(s):** [7490](#)

**Important Comments:** This antibody is expected to recognise all four reported isoforms (NP\_000369.3, NP\_077742.2, NP\_077743.2, NP\_077744.3).

### Immunogen

Peptide with sequence QDPASTCVPEPASQH, from the N Terminus of the protein sequence according to NP\_000369.3; NP\_077742.2; NP\_077743.2; NP\_077744.3.

Please note the [peptide](#) is available for sale.

### Purification and Storage

Purified from goat serum by ammonium sulphate precipitation followed by antigen affinity chromatography using the immunizing peptide.

Supplied at 0.5 mg/ml in Tris saline, 0.02% sodium azide, pH7.3 with 0.5% bovine serum albumin.

Aliquot and store at -20°C. Minimize freezing and thawing.

### Applications Tested

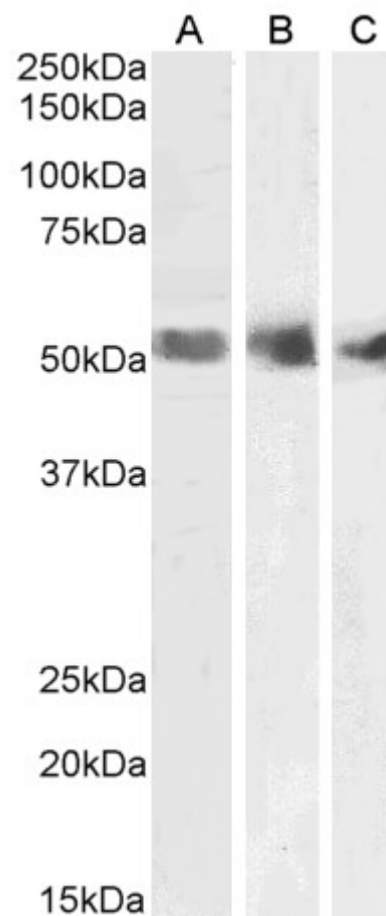
**Peptide ELISA:** antibody detection limit dilution 1:32000.

**Western blot:** Approx 55kDa band observed in Human Kidney, Spleen and Testis lysates (calculated MW of 54.3kDa according to NP\_000369.3). Recommended concentration: 1-3µg/ml.

### Species Reactivity

**Tested:** Human

**Expected from sequence similarity:** Human



EB07332 (1 $\mu$ g/ml) staining of Human Spleen (A), Kidney (B) and Testis (C) lysates (35 $\mu$ g protein in RIPA buffer). Primary incubation was 1 hour. Detected by chemiluminescence.