

## UK Office

### Everest Biotech Ltd

Cherwell Innovation Centre  
77 Heyford Park  
Upper Heyford  
Oxfordshire  
OX25 5HD  
UK

Enquiries:

[info@everestbiotech.com](mailto:info@everestbiotech.com)

Sales:

[sales@everestbiotech.com](mailto:sales@everestbiotech.com)

Tech support:

[support@everestbiotech.com](mailto:support@everestbiotech.com)

Tel: +44 (0)1869 238326

[www.everestbiotech.com](http://www.everestbiotech.com)

**Research Use Only. Not for  
diagnostic or therapeutic use.**

## EB05132 - Goat Anti-WHIP / WRNIP1 Antibody

Size: 100µg specific antibody in 200µl



### Target Protein

**Principal Names:** WHIP, Werner helicase interacting protein, FLJ22526, putative helicase RUVBL, Werner helicase interacting protein 1, RP11-420G6.2, bA420G6.2

**Official Symbol:** WRNIP1

**Accession Number(s):** NP\_064520.2; NP\_569079.1

**Human GeneID(s):** [56897](#)

**Important Comments:** This antibody is expected to recognise isoform 1 (NP\_064520.2) and isoform 2 (NP\_569079.1).

### Immunogen

Peptide with sequence EELRGVDFFKQRRRC, from the C Terminus of the protein sequence according to NP\_064520.2; NP\_569079.1.

Please note the [peptide](#) is available for sale.

### Purification and Storage

Purified from goat serum by ammonium sulphate precipitation followed by antigen affinity chromatography using the immunizing peptide.

Supplied at 0.5 mg/ml in Tris saline, 0.02% sodium azide, pH7.3 with 0.5% bovine serum albumin.

Aliquot and store at -20°C. Minimize freezing and thawing.

### Applications Tested

**Peptide ELISA:** antibody detection limit dilution 1:32000.

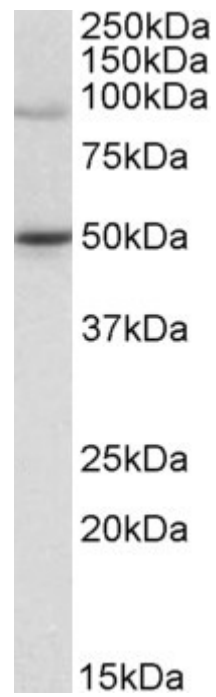
**Western blot:** Approx 90kDa band observed in lysates of cell line Jurkat (calculated MW of 72.1kDa according to NP\_064520.2). The observed molecular weight corresponds to earlier findings in literature with different antibodies (Bish RA, Myers MP., J Biol Chem. 2007 Aug 10;282(32):23184-93; PMID: 17550899). Recommended concentration: 1-3µg/ml. An additional band of unknown identity was also consistently observed at 50kDa. This band was successfully blocked by incubation with the immunizing peptide. We would appreciate any feedback from people in the field - have any such results been reported with other antibodies/lysates? Have any further splice variants/modified forms been reported?

**IHC:** In paraffin embedded Human Kidney shows nuclear staining, stronger in DCT compared to PCT. Recommended concentration, 4-6µg/ml.

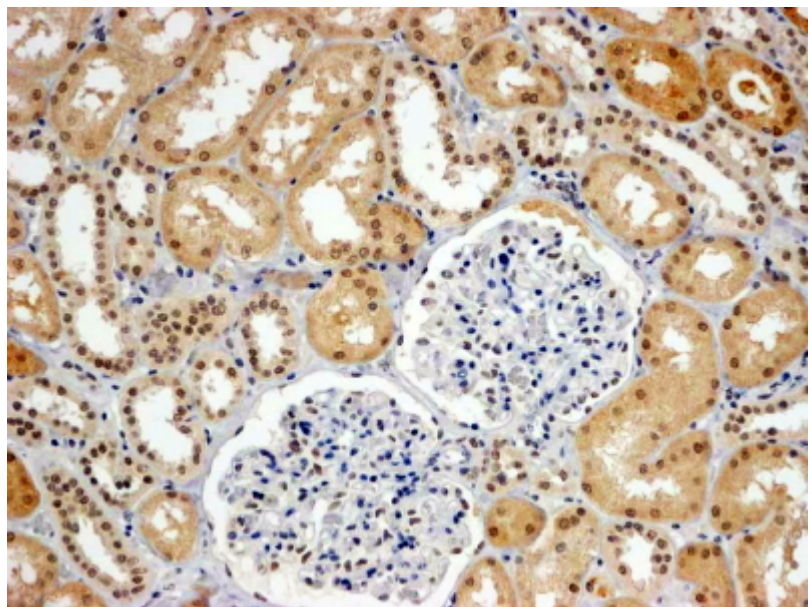
### Species Reactivity

**Tested:** Human

**Expected from sequence similarity:** Human, Mouse, Rat, Dog, Cow



EB05132 (1 $\mu$ g/ml) staining of Jurkat lysate (35 $\mu$ g protein in RIPA buffer). Primary incubation was 1 hour.  
Detected by chemiluminescence.



EB05132 (4 $\mu$ g/ml) staining of paraffin embedded Human Kidney. Steamed antigen retrieval with Tris/EDTA buffer pH 9, HRP-staining.