

## UK Office

### Everest Biotech Ltd

Cherwell Innovation Centre  
77 Heyford Park  
Upper Heyford  
Oxfordshire  
OX25 5HD  
UK

Enquiries:

[info@everestbiotech.com](mailto:info@everestbiotech.com)

Sales:

[sales@everestbiotech.com](mailto:sales@everestbiotech.com)

Tech support:

[support@everestbiotech.com](mailto:support@everestbiotech.com)

Tel: +44 (0)1869 238326

[www.everestbiotech.com](http://www.everestbiotech.com)

**Research Use Only. Not for  
diagnostic or therapeutic use.**

## EB06831 - Goat Anti-VPS41 Antibody

Size: 100µg specific antibody in 200µl



### Target Protein

**Principal Names:** VPS41, vacuolar protein sorting 41 (yeast), HGNC:12713, HVSP41, vacuolar assembly protein 41, vacuolar protein sorting 41 (yeast homolog), vacuolar protein sorting 41 homolog (S. cerevisiae), HVPS41, hVps41p, vacuolar protein sorting 41

**Official Symbol:** VPS41

**Accession Number(s):** NP\_055211.2; NP\_542198.2

**Human GeneID(s):** [27072](#)

**Important Comments:** This antibody is expected to recognise both reported isoforms (NP\_055211.2 and NP\_542198.2)

### Immunogen

Peptide with sequence C-DHLKKDSQNKTLTK, from the internal region of the protein sequence according to NP\_055211.2; NP\_542198.2.

Please note the [peptide](#) is available for sale.

### Purification and Storage

Purified from goat serum by ammonium sulphate precipitation followed by antigen affinity chromatography using the immunizing peptide.

Supplied at 0.5 mg/ml in Tris saline, 0.02% sodium azide, pH7.3 with 0.5% bovine serum albumin.

Aliquot and store at -20°C. Minimize freezing and thawing.

### Applications Tested

**Peptide ELISA:** antibody detection limit dilution 1:16000.

**Western blot:** Preliminary experiments gave bands at approx 48kDa and 28kDa in human duodenum, kidney and placenta lysates after 1µg/ml antibody staining. Please note that currently we cannot find an explanation in the literature for the bands we observe given the calculated size of 98.5kDa according to NP\_055211.1 and 100kDa according to NP\_542198.1. Both detected bands were successfully blocked by incubation with the immunizing peptide (and BLAST results with the immunizing peptide sequence did not identify any other proteins to explain the additional bands). We would appreciate any feedback from people in the field - have any results been reported with other antibodies/lysates? Have any further splice variants/modified forms been reported

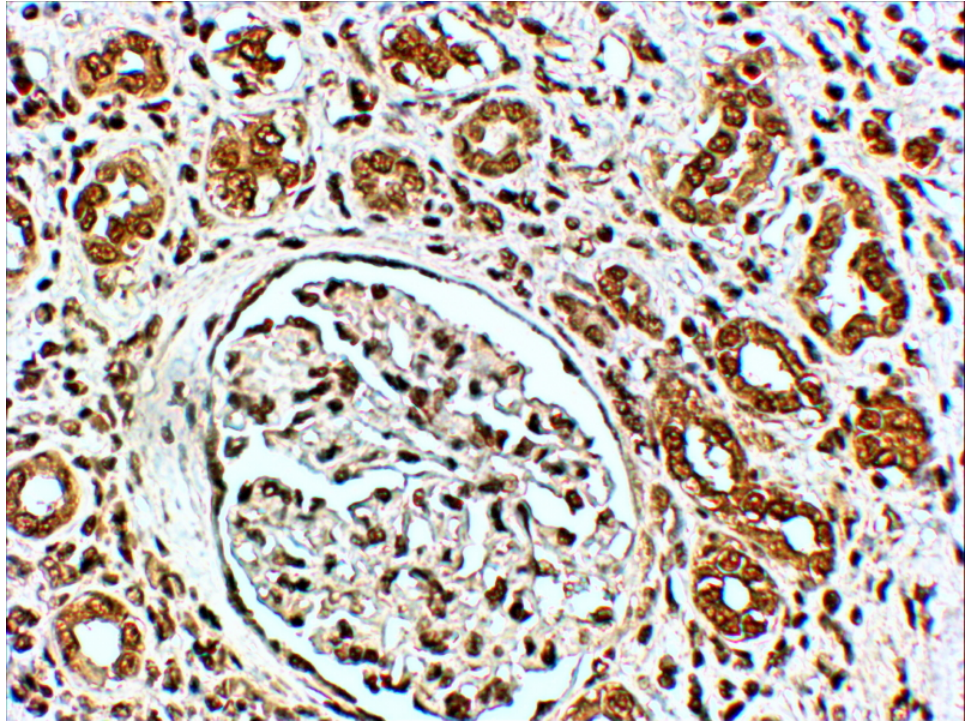
**IHC:** In paraffin embedded Human Kidney shows staining of collective tubules.

Recommended concentration, 4-6µg/ml.

### Species Reactivity

**Tested:** Human

**Expected from sequence similarity:** Human, Mouse, Rat, Dog, Cow



EB06831 (4 $\mu$ g/ml) staining of paraffin embedded Human Kidney. Steamed antigen retrieval with citrate buffer pH 6, HRP-staining. Similar results were obtained after antigen retrieval at pH9.