

## UK Office

### Everest Biotech Ltd

Cherwell Innovation Centre  
77 Heyford Park  
Upper Heyford  
Oxfordshire  
OX25 5HD  
UK

Enquiries:

[info@everestbiotech.com](mailto:info@everestbiotech.com)

Sales:

[sales@everestbiotech.com](mailto:sales@everestbiotech.com)

Tech support:

[support@everestbiotech.com](mailto:support@everestbiotech.com)

Tel: +44 (0)1869 238326

[www.everestbiotech.com](http://www.everestbiotech.com)

**Research Use Only. Not for  
diagnostic or therapeutic use.**

## EB06833 - Goat Anti-VPS37C Antibody

Size: 100µg specific antibody in 200µl



### Target Protein

**Principal Names:** VPS37C, vacuolar protein sorting 37C (yeast), FLJ20847, vacuolar protein sorting 37C, vacuolar protein sorting 37 homolog C (S. cerevisiae)

**Official Symbol:** VPS37C

**Accession Number(s):** NP\_060436.4

**Human GeneID(s):** [55048](#)

### Immunogen

Peptide with sequence C-ETLKDKTLQELEELQ, from the internal region of the protein sequence according to NP\_060436.4.

Please note the [peptide](#) is available for sale.

### Purification and Storage

Purified from goat serum by ammonium sulphate precipitation followed by antigen affinity chromatography using the immunizing peptide.

Supplied at 0.5 mg/ml in Tris saline, 0.02% sodium azide, pH7.3 with 0.5% bovine serum albumin.

Aliquot and store at -20°C. Minimize freezing and thawing.

### Applications Tested

**Peptide ELISA:** antibody detection limit dilution 1:32000.

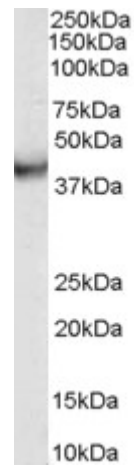
**Western blot:** Approx 38kDa band observed in human duodenum lysates (calculated MW of 38.7kDa according to NP\_060436.4). Recommended concentration: 0.03 - 0.1µg/ml.

**IHC:** In paraffin embedded Human Prostate shows strong cytoplasm staining in stromal cells. Recommended concentration, 3-6µg/ml.

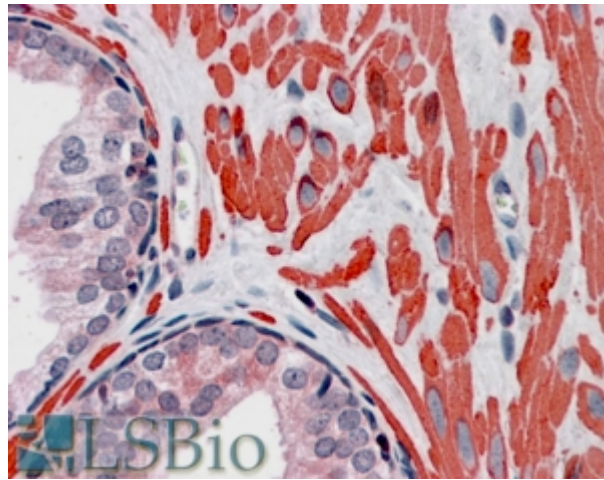
### Species Reactivity

**Tested:** Human

**Expected from sequence similarity:** Human



EB06833 (0.03g/ml) staining of human duodenum lysate (35µg protein in RIPA buffer). Primary incubation was 1 hour. Detected by chemiluminescence.



EB06833 (3.8µg/ml) staining of paraffin embedded Human Prostate. Steamed antigen retrieval with citrate buffer pH 6, AP-staining.