

UK Office

Everest Biotech Ltd

Cherwell Innovation Centre
77 Heyford Park
Upper Heyford
Oxfordshire
OX25 5HD
UK

Enquiries:

info@everestbiotech.com

Sales:

sales@everestbiotech.com

Tech support:

support@everestbiotech.com

Tel: +44 (0)1869 238326

www.everestbiotech.com

**Research Use Only. Not for
diagnostic or therapeutic use.**

EB07369 - Goat Anti-VPS29 (Internal) Antibody

Size: 100µg specific antibody in 200µl



Target Protein

Principal Names: VPS29, vacuolar protein sorting 29 (yeast), DC15, DC7, DKFZp564F0223, FLJ20492, PEP11, retromer protein, vacuolar protein sorting 29, vacuolar protein sorting 29 (yeast homolog), vacuolar sorting protein VPS29/PEP11, x 007 protein

Official Symbol: VPS29

Accession Number(s): NP_057310.1; NP_476528.1

Human GeneID(s): [51699](#)

Non-Human GeneID(s): 56433 (mouse), 288666 (rat)

Important Comments: This antibody is expected to recognise both reported isoforms (NP_057310.1 and NP_476528.1).

Immunogen

Peptide with sequence CTGNLCTKESYDYLK, from the internal region of the protein sequence according to NP_057310.1; NP_476528.1.

Please note the [peptide](#) is available for sale.

Purification and Storage

Purified from goat serum by ammonium sulphate precipitation followed by antigen affinity chromatography using the immunizing peptide.

Supplied at 0.5 mg/ml in Tris saline, 0.02% sodium azide, pH7.3 with 0.5% bovine serum albumin.

Aliquot and store at -20°C. Minimize freezing and thawing.

Applications Tested

Peptide ELISA: antibody detection limit dilution 1:16000.

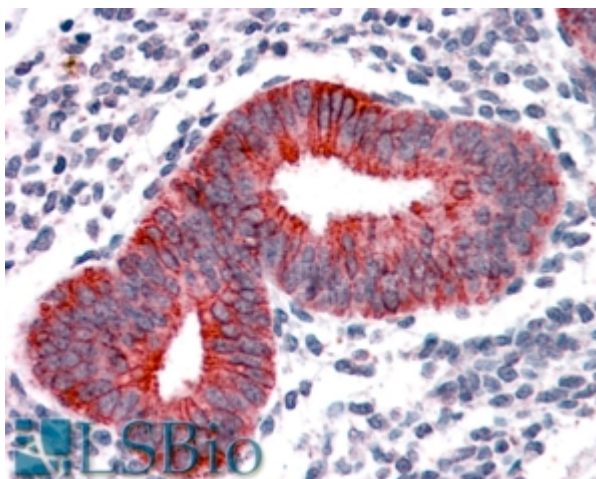
Western blot: Preliminary experiments gave an approx 60kDa band in Human Spleen lysates after 0.3µg/ml antibody staining. Please note that currently we cannot find an explanation in the literature for the band we observe given the calculated size of 20.5kDa according to NP_057310.1 and 20.9kDa according to NP_476528.1. The 60kDa band was successfully blocked by incubation with the immunizing peptide. We would appreciate any feedback from people in the field - have any results been reported with other antibodies/lysates? Have any further splice variants/modified forms been reported?

IHC: In paraffin embedded Human Uterus shows vesicular and membranous staining in the endometrial glands. Recommended concentration, 4-8µg/ml.

Species Reactivity

Tested: Human

Expected from sequence similarity: Human, Mouse, Rat, Dog



EB07369 (3.8µg/ml) staining of paraffin embedded Human Uterus. Steamed antigen retrieval with citrate buffer pH 6, AP-staining.