

UK Office

Everest Biotech Ltd

Cherwell Innovation Centre
77 Heyford Park
Upper Heyford
Oxfordshire
OX25 5HD
UK

Enquiries:

info@everestbiotech.com

Sales:

sales@everestbiotech.com

Tech support:

support@everestbiotech.com

Tel: +44 (0)1869 238326

www.everestbiotech.com

**Research Use Only. Not for
diagnostic or therapeutic use.**

EB06558 - Goat Anti-VMAT2 / SLC18A2 Antibody

Size: 100µg specific antibody in 200µl



Target Protein

Principal Names: VMAT2, SLC18A2, SVAT, SVMT, VAT2, solute carrier family 18 (vesicular monoamine), member 2

Official Symbol: SLC18A2

Accession Number(s): NP_003045.2

Human GeneID(s): [6571](#)

Non-Human GeneID(s): 214084 (mouse), 25549 (rat)

Immunogen

Peptide with sequence C-SYPIGEDEESES, from the C Terminus of the protein sequence according to NP_003045.2.

Please note the [peptide](#) is available for sale.

Purification and Storage

Purified from goat serum by ammonium sulphate precipitation followed by antigen affinity chromatography using the immunizing peptide.

Supplied at 0.5 mg/ml in Tris saline, 0.02% sodium azide, pH7.3 with 0.5% bovine serum albumin.

Aliquot and store at -20°C. Minimize freezing and thawing.

Applications Tested

Peptide ELISA: antibody detection limit dilution 1:128000.

Western blot: Approx 55kDa band observed in Human Placenta and Adrenal Gland lysates (calculated MW of 55.7kDa according to NP_003045.2). Recommended concentration 1-3µg/ml. Primary incubation was 1 hour. Preliminary testing was unsuccessful on Rat Brain for this particular batch.

IHC: Paraffin embedded Human Pancreas. Recommended concentration: 5µg/ml. In paraffin embedded Human Adrenal Gland expression of SLC18A2 is detected in chromaffin cells. Recommended concentration: 2.5µg/ml

Species Reactivity

Tested: Human

Expected from sequence similarity: Human, Mouse, Rat, Dog, Pig, Cow

Specific Reference

This antibody has been successfully used in Western blot on Rat:

Shiliang Zhang, Jia Qi, Xueping Li, Hui-Ling Wang, Jonathan P. Britt, Alexander F. Hoffman, Antonello Bonci, Carl R. Lupica, and Marisela Morales.

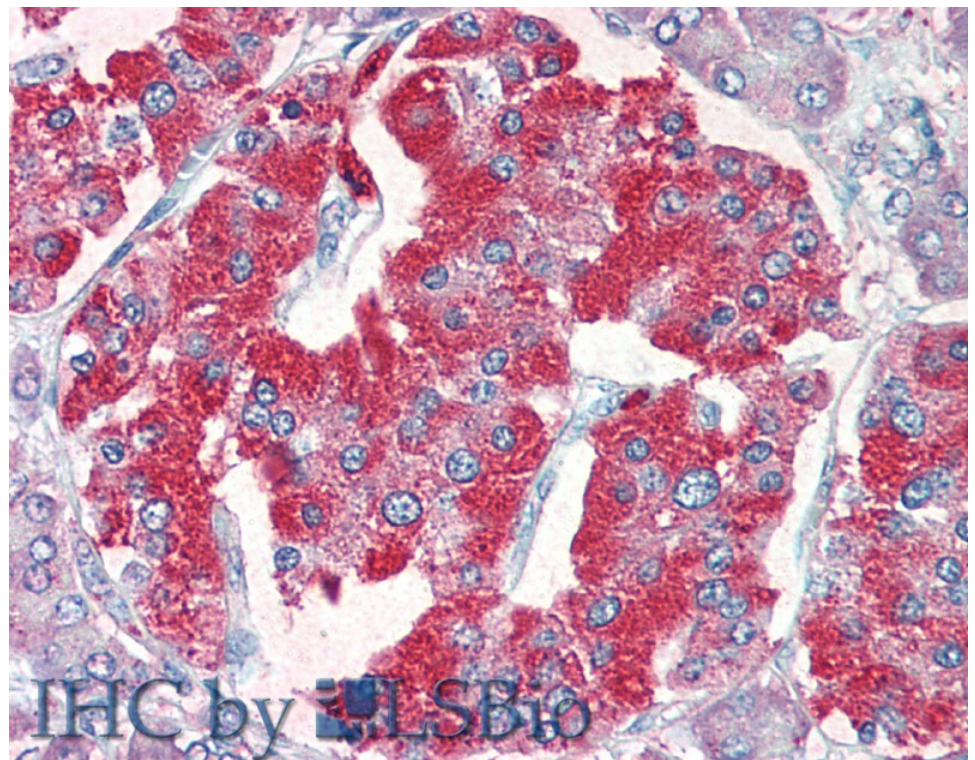
Dopaminergic and glutamatergic microdomains within a subset of rodent mesoaccumbens axons.

Nat Neurosci. 2015 March;18(3):386–392.

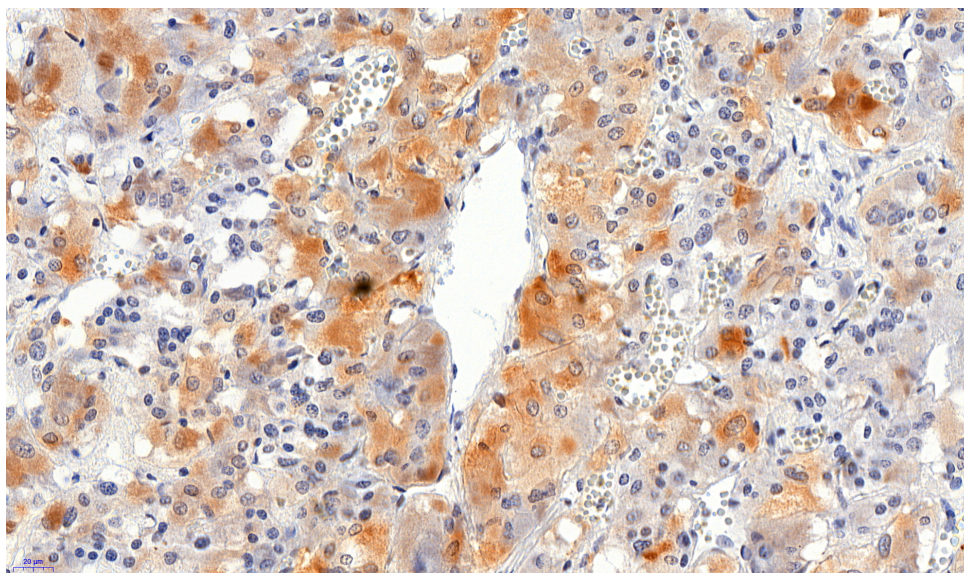
PMID: 25664911



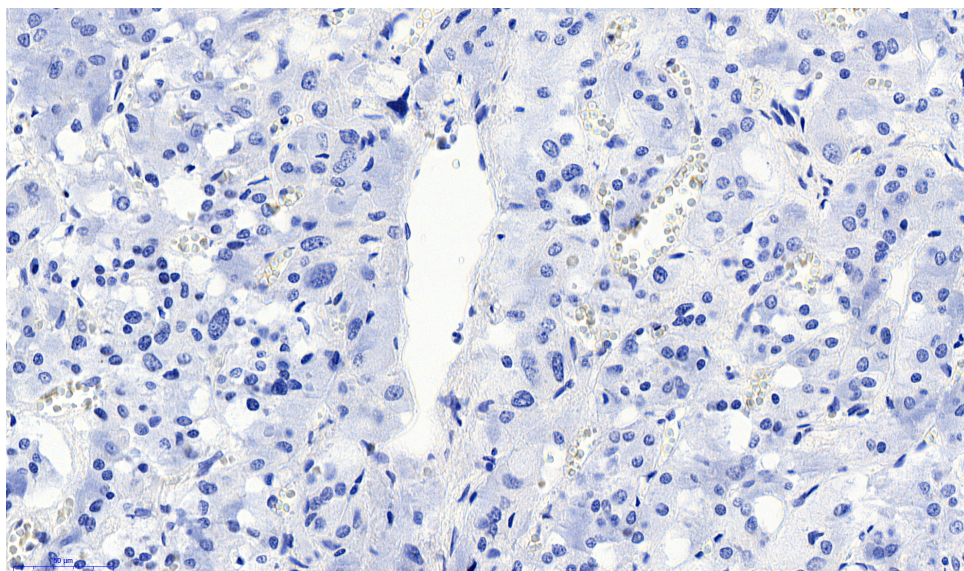
EB06558 (1µg/ml) staining of Human Placenta (A) and Human Adrenal Gland (B) lysate (35µg protein in RIPA buffer). Detected by chemiluminescence.



EB06558 (5µg/ml) staining of paraffin embedded Human Pancreas. Steamed antigen retrieval with citrate buffer pH 6, AP-staining.



EB06558 (2.5µg/ml) staining of paraffin embedded Human Adrenal Gland. Heat induced antigen retrieval with citrate buffer pH 6, HRP-staining.



EB06558 Negative Control showing staining of paraffin embedded Human Adrenal Gland, with no primary antibody.