

## UK Office

### Everest Biotech Ltd

Cherwell Innovation Centre  
77 Heyford Park  
Upper Heyford  
Oxfordshire  
OX25 5HD  
UK

Enquiries:

[info@everestbiotech.com](mailto:info@everestbiotech.com)

Sales:

[sales@everestbiotech.com](mailto:sales@everestbiotech.com)

Tech support:

[support@everestbiotech.com](mailto:support@everestbiotech.com)

Tel: +44 (0)1869 238326

[www.everestbiotech.com](http://www.everestbiotech.com)

**Research Use Only. Not for  
diagnostic or therapeutic use.**

## EB06558-T - Goat Anti-VMAT2 / SLC18A2 Antibody - Trial

Size: 20µg specific antibody in 40µl



### Target Protein

**Principal Names:** VMAT2, SLC18A2, SVAT, SVMT, VAT2, solute carrier family 18 (vesicular monoamine), member 2

**Official Symbol:** SLC18A2

**Accession Number(s):** NP\_003045.2

**Human GeneID(s):** [6571](#)

**Non-Human GeneID(s):** 214084 (mouse), 25549 (rat)

### Immunogen

Peptide with sequence C-SYPIGEDEESESD, from the C Terminus of the protein sequence according to NP\_003045.2.

Please note the [peptide](#) is available for sale.

### Purification and Storage

Purified from goat serum by ammonium sulphate precipitation followed by antigen affinity chromatography using the immunizing peptide.

Supplied at 0.5 mg/ml in Tris saline, 0.02% sodium azide, pH7.3 with 0.5% bovine serum albumin.

Aliquot and store at -20°C. Minimize freezing and thawing.

### Applications Tested

**Peptide ELISA:** antibody detection limit dilution 1:128000.

**Western blot:** Approx 55kDa band observed in Human Placenta and Adrenal Gland lysates (calculated MW of 55.7kDa according to NP\_003045.2). Recommended concentration 1-3µg/ml. Primary incubation was 1 hour. Preliminary testing was unsuccessful on Rat Brain for this particular batch.

**IHC:** Paraffin embedded Human Pancreas. Recommended concentration: 5µg/ml. In paraffin embedded Human Adrenal Gland expression of SLC18A2 is detected in chromaffin cells. Recommended concentration: 2.5µg/ml

### Species Reactivity

**Tested:** Human

**Expected from sequence similarity:** Human, Mouse, Rat, Dog, Pig, Cow

### Specific Reference

**This antibody has been successfully used in Western blot on Rat:**

Shiliang Zhang, Jia Qi, Xueping Li, Hui-Ling Wang, Jonathan P. Britt, Alexander F. Hoffman, Antonello Bonci, Carl R. Lupica, and Marisela Morales.

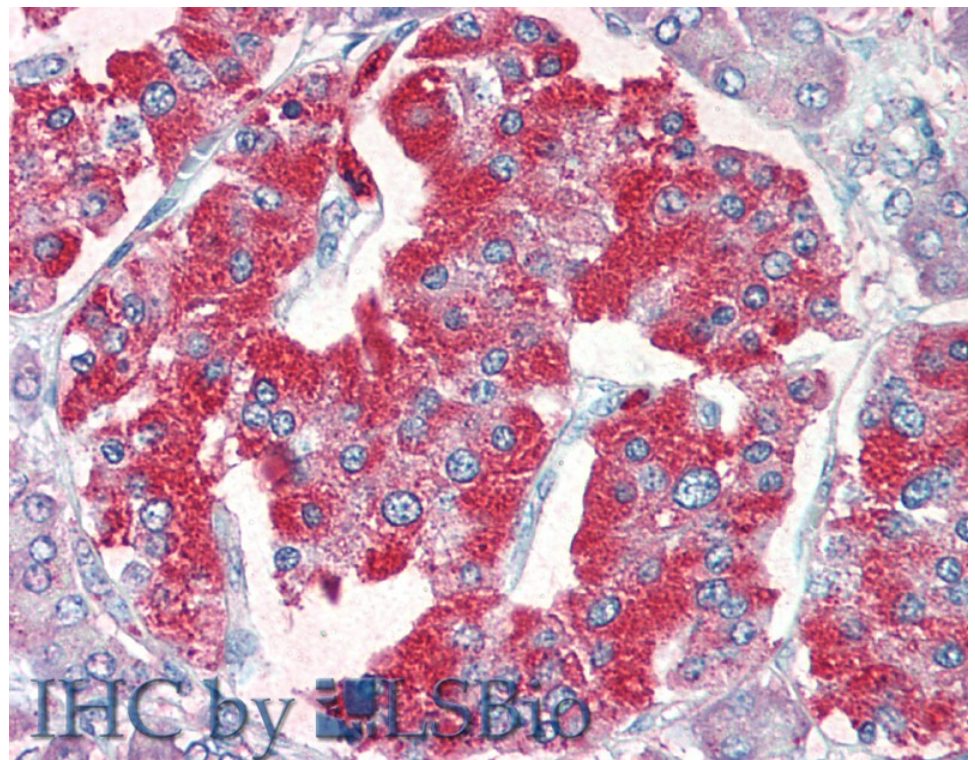
Dopaminergic and glutamatergic microdomains within a subset of rodent mesoaccumbens axons.

Nat Neurosci. 2015 March;18(3):386–392.

PMID: 25664911

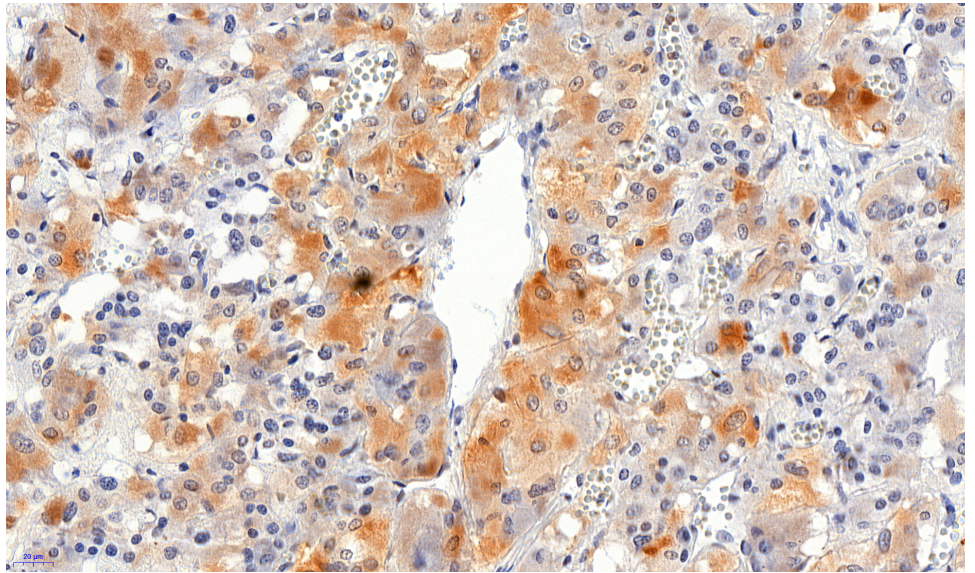


EB06558 (1µg/ml) staining of Human Placenta (A) and Human Adrenal Gland (B) lysate (35µg protein in RIPA buffer). Detected by chemiluminescence.

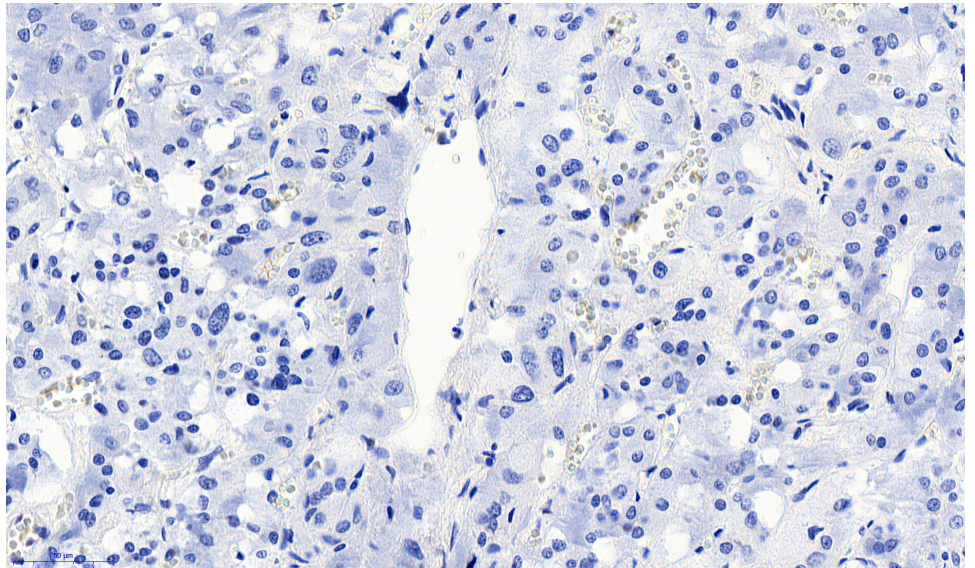


EB06558 (5µg/ml) staining of paraffin embedded Human Pancreas. Steamed antigen retrieval with citrate buffer pH 6, AP-staining.





EB06558 (2.5µg/ml) staining of paraffin embedded Human Adrenal Gland. Heat induced antigen retrieval with citrate buffer pH 6, HRP-staining.



EB06558 Negative Control showing staining of paraffin embedded Human Adrenal Gland, with no primary antibody.