

UK Office

Everest Biotech Ltd

Cherwell Innovation Centre
77 Heyford Park
Upper Heyford
Oxfordshire
OX25 5HD
UK

Enquiries:

info@everestbiotech.com

Sales:

sales@everestbiotech.com

Tech support:

support@everestbiotech.com

Tel: +44 (0)1869 238326

www.everestbiotech.com

**Research Use Only. Not for
diagnostic or therapeutic use.**

EB12666 - Goat Anti-VE-cadherin (aa537-549) Antibody

Size: 100µg specific antibody in 200µl



Target Protein

Principal Names: CDH5, cadherin 5, type 2 (vascular endothelium), 7B4, CD144, 7B4 antigen, VE-cadherin, cadherin 5, type 2, VE-cadherin (vascular epithelium), cadherin-5, cd144 antigen, endothelial-specific cadherin, vascular endothelial cadherin

Official Symbol: CDH5

Accession Number(s): NP_001786.2

Human GeneID(s): [1003](#)

Immunogen

Peptide with sequence C-TVKYGQFDREHTK, from the internal region of the protein sequence according to NP_001786.2.

Please note the [peptide](#) is available for sale.

Purification and Storage

Purified from goat serum by ammonium sulphate precipitation followed by antigen affinity chromatography using the immunizing peptide.

Supplied at 0.5 mg/ml in Tris saline, 0.02% sodium azide, pH7.3 with 0.5% bovine serum albumin.

Aliquot and store at -20°C. Minimize freezing and thawing.

Applications Tested

Peptide ELISA: antibody detection limit dilution 1:32000.

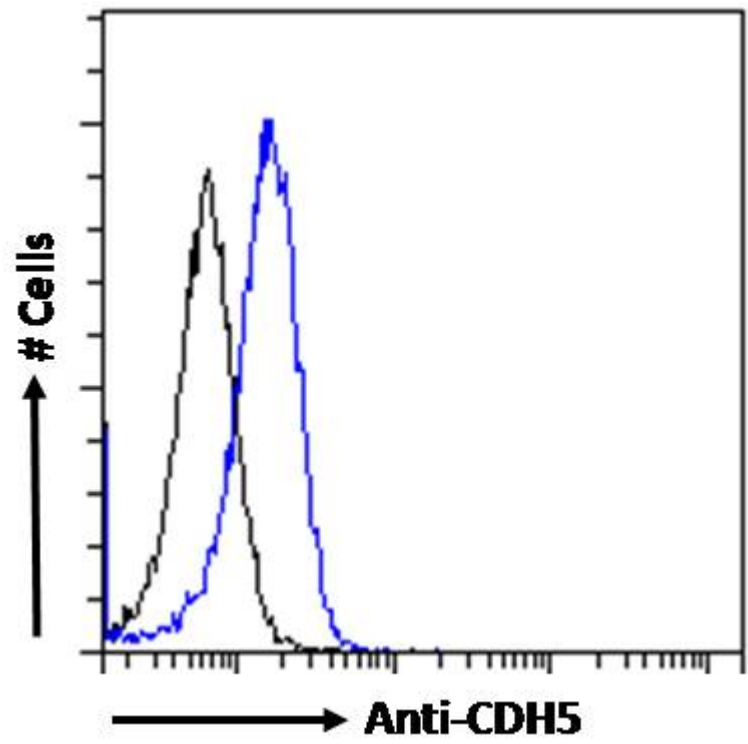
Western blot: Preliminary experiments gave an approx 100kDa band in lysates of cell line HeLa and approx. 110kDa in A549 at 1-2µg/ml antibody staining. Please note that currently we cannot find an explanation in the literature for the band we observed, given the calculated size of 87.5kDa according to NP_001786.2.

Flow Cytometry: Flow cytometric analysis of HeLa cells. Recommended concentration: 10ug/ml.

Species Reactivity

Tested: Human

Expected from sequence similarity: Human



EB12666 Flow cytometric analysis of paraformaldehyde fixed HeLa cells (blue line), permeabilized with 0.5% Triton. Primary incubation 1hr (10ug/ml) followed by Alexa Fluor 488 secondary antibody (1ug/ml). IgG control: Unimmunized goat IgG (black line) followed by Alexa Fluor 488 secondary antibody.