

UK Office

Everest Biotech Ltd

Cherwell Innovation Centre
77 Heyford Park
Upper Heyford
Oxfordshire
OX25 5HD
UK

Enquiries:

info@everestbiotech.com

Sales:

sales@everestbiotech.com

Tech support:

support@everestbiotech.com

Tel: +44 (0)1869 238326

www.everestbiotech.com

**Research Use Only. Not for
diagnostic or therapeutic use.**

EB06467 - Goat Anti-VAV3 Antibody

Size: 100µg specific antibody in 200µl



Target Protein

Principal Names: VAV3, vav 3 oncogene, vav 3 guanine nucleotide exchange factor, FLJ40431

Official Symbol: VAV3

Accession Number(s): NP_006104.4; NP_001073343.1

Human GeneID(s): [10451](#)

Important Comments: This antibody is expected to recognize both reported isoforms (NP_006104.4; NP_001073343.1).

Immunogen

Peptide with sequence C-SGEQGTLKLPEK, from the internal region of the protein sequence according to NP_006104.4; NP_001073343.1.

Please note the [peptide](#) is available for sale.

Purification and Storage

Purified from goat serum by ammonium sulphate precipitation followed by antigen affinity chromatography using the immunizing peptide.

Supplied at 0.5 mg/ml in Tris saline, 0.02% sodium azide, pH7.3 with 0.5% bovine serum albumin.

Aliquot and store at -20°C. Minimize freezing and thawing.

Applications Tested

Peptide ELISA: antibody detection limit dilution 1:32000.

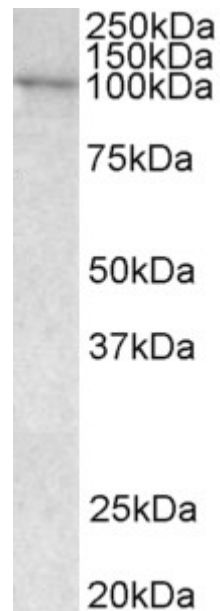
Western blot: Approx 100kDa band observed in Human Bone Marrow lysates (calculated MW of 97.8kDa according to NP_006104.4). Recommended concentration: 0.5-1.5µg/ml. Primary incubation 1 hour at room temperature.

IHC: Paraffin embedded Human Spleen. Recommended concentration: 7.5µg/ml.

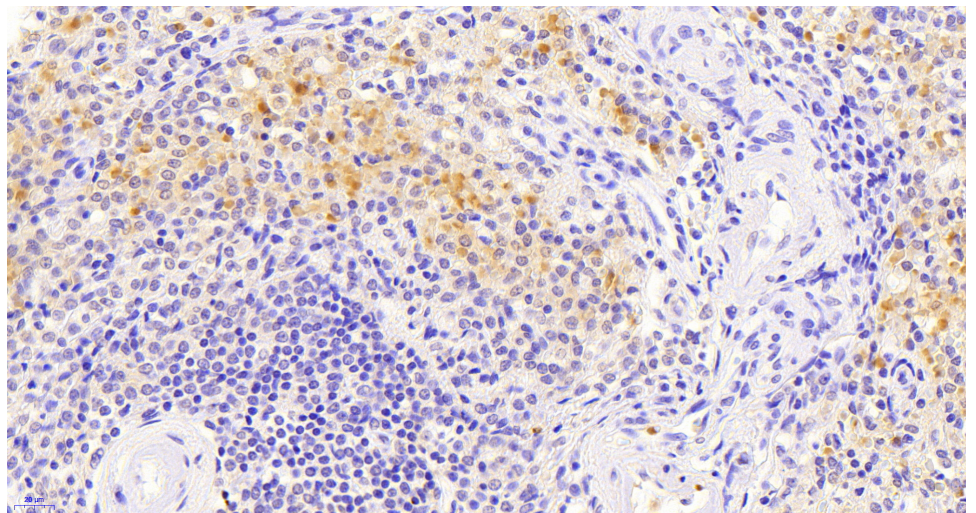
Species Reactivity

Tested: Human

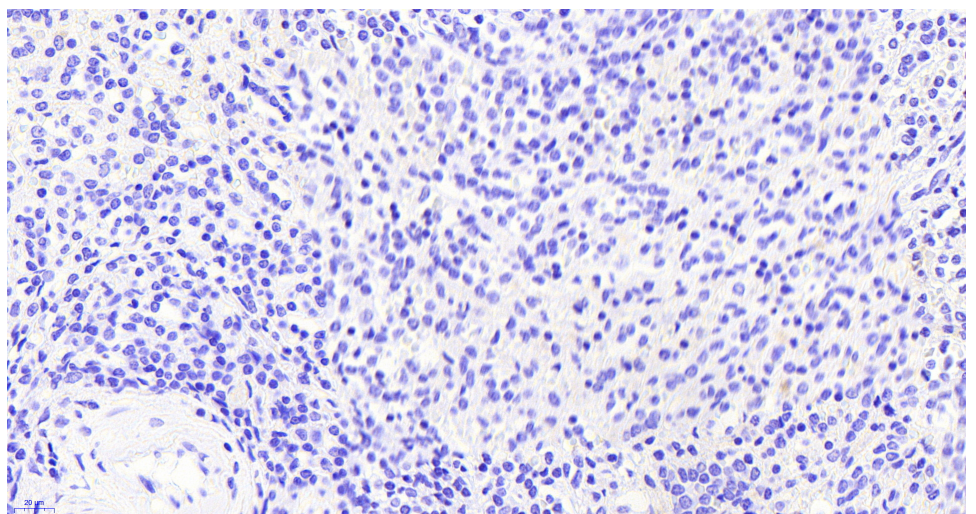
Expected from sequence similarity: Human



EB06467 (0.5µg/ml) staining of Human Bone Marrow lysate (35µg protein in RIPA buffer). Detected by chemiluminescence.



EB06467 (7.5µg/ml) staining of paraffin embedded Human Spleen. Heat induced antigen retrieval with citrate buffer pH 6, HRP-staining.



EB06467 Negative Control showing staining of paraffin embedded Human Spleen, with no primary antibody.