

UK Office

Everest Biotech Ltd

Cherwell Innovation Centre
77 Heyford Park
Upper Heyford
Oxfordshire
OX25 5HD
UK

Enquiries:

info@everestbiotech.com

Sales:

sales@everestbiotech.com

Tech support:

support@everestbiotech.com

Tel: +44 (0)1869 238326

www.everestbiotech.com

**Research Use Only. Not for
diagnostic or therapeutic use.**

EB08231 - Goat Anti-UXT Antibody

Size: 100µg specific antibody in 200µl



Target Protein

Principal Names: UXT, ubiquitously-expressed transcript protein, ART-27, androgen receptor trapped clone 27 protein, SKP2-associated alpha PFD 1, STAP1, ubiquitously expressed prefoldin like chaperone, ubiquitously-expressed, prefoldin-like chaperone

Official Symbol: UXT

Accession Number(s): NP_004173.1; NP_705582.1

Human GeneID(s): [8409](#)

Important Comments: This antibody is expected to recognize both reported isoforms (NP_004173.1; NP_705582.1).

Immunogen

Peptide with sequence C-DHRDKVYEQLAKY, from the C Terminus of the protein sequence according to NP_004173.1; NP_705582.1.

Please note the [peptide](#) is available for sale.

Purification and Storage

Purified from goat serum by ammonium sulphate precipitation followed by antigen affinity chromatography using the immunizing peptide.

Supplied at 0.5 mg/ml in Tris saline, 0.02% sodium azide, pH7.3 with 0.5% bovine serum albumin.

Aliquot and store at -20°C. Minimize freezing and thawing.

Applications Tested

Peptide ELISA: antibody detection limit dilution 1:64000.

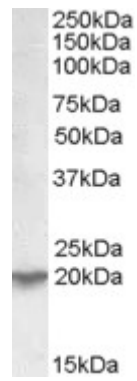
Western blot: Approx 20kDa band observed in Human Kidney and Skeletal Muscle lysates (calculated MW of 19.6kDa according to NP_705582.1). Recommended concentration: 0.01-0.03µg/ml.

IHC: In paraffin embedded Thyroid Gland shows staining of cytoplasm in all epithelial cells, but nuclear staining in some of them. Recommended concentration, 5-10µg/ml.

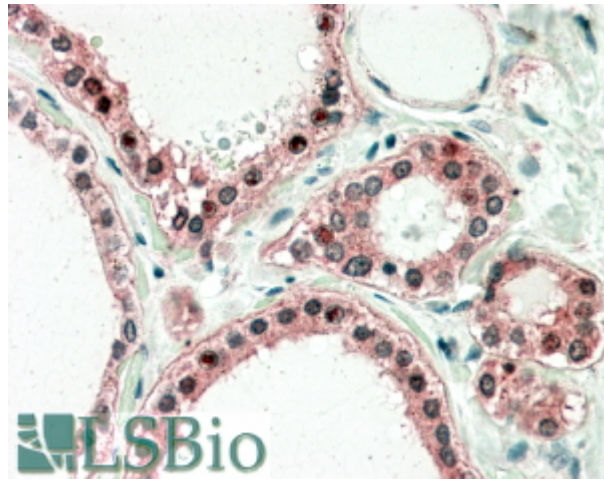
Species Reactivity

Tested: Human

Expected from sequence similarity: Human



EB08231 (0.03 μ g/ml) staining of Human Kidney lysate (35 μ g protein in RIPA buffer). Primary incubation was 1 hour. Detected by chemiluminescence.



EB08231 (5 μ g/ml) staining of paraffin embedded Human Thyroid Gland. Steamed antigen retrieval with citrate buffer pH 6, AP-staining.