

## UK Office

### Everest Biotech Ltd

Cherwell Innovation Centre  
77 Heyford Park  
Upper Heyford  
Oxfordshire  
OX25 5HD  
UK

Enquiries:

[info@everestbiotech.com](mailto:info@everestbiotech.com)

Sales:

[sales@everestbiotech.com](mailto:sales@everestbiotech.com)

Tech support:

[support@everestbiotech.com](mailto:support@everestbiotech.com)

Tel: +44 (0)1869 238326

[www.everestbiotech.com](http://www.everestbiotech.com)

**Research Use Only. Not for  
diagnostic or therapeutic use.**

## EB09790 - Goat Anti-UBP1 Antibody

Size: 100µg specific antibody in 200µl



### Target Protein

**Principal Names:** DKFZp686L1745, LBP1A, LBP-1a, LBP1B, LBP-1B, transcription factor LBP-1, upstream binding protein 1 (LBP-1a), UBP1

**Official Symbol:** UBP1

**Accession Number(s):** NP\_055332.3; NP\_001121632.1

**Human GeneID(s):** [7342](#)

**Non-Human GeneID(s):** 22221 (mouse), 301038 (rat)

**Important Comments:** Reported variants represent identical protein: NP\_001121633.1, NP\_055332.3.

### Immunogen

Peptide with sequence C-PNHQGDGASQTSGE, from the internal region of the protein sequence according to NP\_055332.3; NP\_001121632.1.

Please note the [peptide](#) is available for sale.

### Purification and Storage

Purified from goat serum by ammonium sulphate precipitation followed by antigen affinity chromatography using the immunizing peptide.

Supplied at 0.5 mg/ml in Tris saline, 0.02% sodium azide, pH7.3 with 0.5% bovine serum albumin.

Aliquot and store at -20°C. Minimize freezing and thawing.

### Applications Tested

**Peptide ELISA:** antibody detection limit dilution 1:2000.

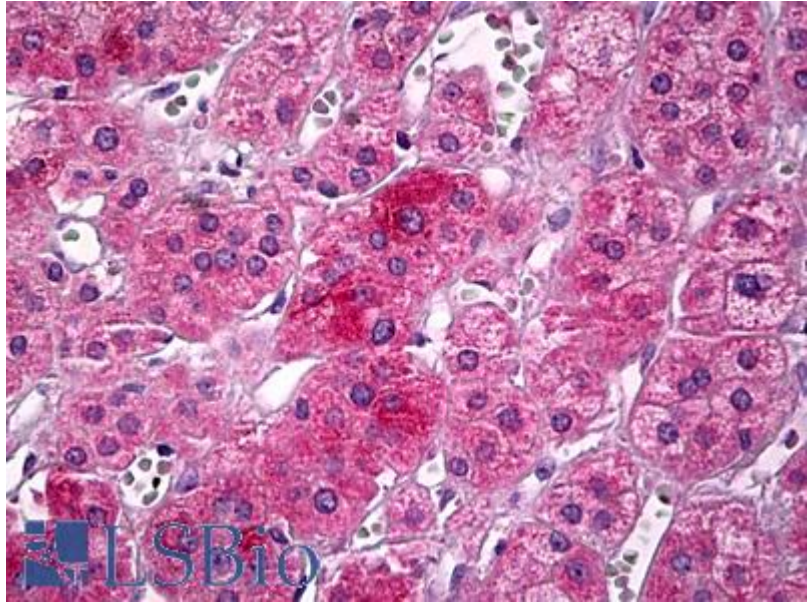
**Western blot:** Preliminary experiments in Human Kidney, Human Adrenal gland, HeLa and HepG2 lysates gave no specific signal but low background (at antibody concentration up to 2µg/ml).

**IHC:** Paraffin embedded Human Adrenal Medulla. Recommended concentration: 10µg/ml.

### Species Reactivity

**Tested:** Human

**Expected from sequence similarity:** Human, Mouse, Rat, Dog



EB09790 (10µg/ml) staining of paraffin embedded Human Adrenal Medulla. Steamed antigen retrieval with citrate buffer Ph 6, AP-staining.