

## UK Office

### Everest Biotech Ltd

Cherwell Innovation Centre  
77 Heyford Park  
Upper Heyford  
Oxfordshire  
OX25 5HD  
UK

Enquiries:

[info@everestbiotech.com](mailto:info@everestbiotech.com)

Sales:

[sales@everestbiotech.com](mailto:sales@everestbiotech.com)

Tech support:

[support@everestbiotech.com](mailto:support@everestbiotech.com)

Tel: +44 (0)1869 238326

[www.everestbiotech.com](http://www.everestbiotech.com)

**Research Use Only. Not for  
diagnostic or therapeutic use.**

## EB06739 - Goat Anti-Tyrosine Hydroxylase Antibody

Size: 100µg specific antibody in 200µl



### Target Protein

**Principal Names:** TH, tyrosine hydroxylase, HGNC:11782, TYH, DYT14, DYT5b, dystonia 14, tyrosine 3-monooxygenase

**Official Symbol:** TH

**Accession Number(s):** NP\_954986.2; NP\_000351.2; NP\_954987.2

**Human GeneID(s):** [7054](#)

**Important Comments:** This antibody is expected to recognise all three reported isoforms (as represented by NP\_954986.2; NP\_000351.2; NP\_954987.2).

### Immunogen

Peptide with sequence C-VQDELDTLAHAL, from the C Terminus of the protein sequence according to NP\_954986.2; NP\_000351.2; NP\_954987.2.

Please note the [peptide](#) is available for sale.

### Purification and Storage

Purified from goat serum by ammonium sulphate precipitation followed by antigen affinity chromatography using the immunizing peptide.

Supplied at 0.5 mg/ml in Tris saline, 0.02% sodium azide, pH7.3 with 0.5% bovine serum albumin.

Aliquot and store at -20°C. Minimize freezing and thawing.

### Applications Tested

**Peptide ELISA:** antibody detection limit dilution 1:8000.

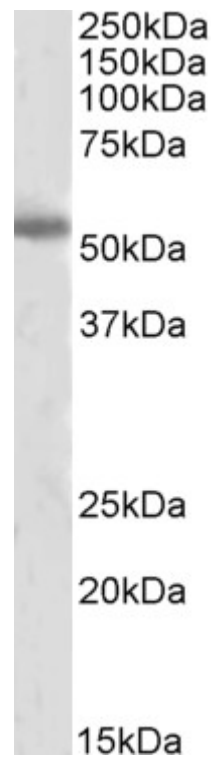
**Western blot:** Approx 55kDa band observed in Human Brain (Cerebral Cortex) lysates (calculated MW of 55.5kDa according to NP\_000351.2). Recommended concentration: 2-4µg/ml. Primary incubation was 1 hour. Preliminary testing was unsuccessful on Mouse and Rat Brain for this particular batch.

**IHC:** Frozen sections of Human Hypothalamus shows staining of neurons and their processes. Recommended concentration: 0.1-0.3µg/ml.

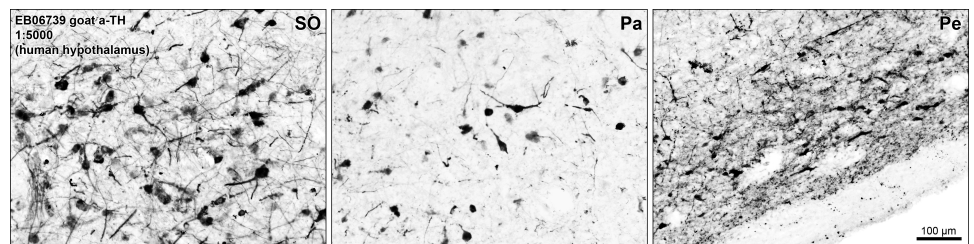
### Species Reactivity

**Tested:** Human

**Expected from sequence similarity:** Human, Rat, Dog



EB06739 (2 $\mu$ g/ml) staining of Human Cerebral Cortex lysate (35 $\mu$ g protein in RIPA buffer). Detected by chemiluminescence.



EB06739 (0.1 $\mu$ g/ml) staining of PFA-perfused cryosection of Human Hypothalamic supraoptic (SO), paraventricular (Pa) and periventricular (Pe) nuclei. Antigen retrieval with citrate buffer pH 6 at 80C for 30min, HRP-staining with Ni-DAB after Biotin-SP-antigoat amplification. Data obtained by Prof. Erik Hrabovszky, Inst, Exp, Med., Budapest, Hungary.