

UK Office

Everest Biotech Ltd

Cherwell Innovation Centre
77 Heyford Park
Upper Heyford
Oxfordshire
OX25 5HD
UK

Enquiries:

info@everestbiotech.com

Sales:

sales@everestbiotech.com

Tech support:

support@everestbiotech.com

Tel: +44 (0)1869 238326

www.everestbiotech.com

**Research Use Only. Not for
diagnostic or therapeutic use.**

EB05086 - Goat Anti-TXNDC1 / TMX Antibody

Size: 100µg specific antibody in 200µl



Target Protein

Principal Names: TMX1, TXNDC, TMX, thioredoxin domain containing 1, TXNDC1, DKFZP564E1962, thioredoxin-related transmembrane protein 1, PDIA11, protein disulfide isomerase family A, member 11, transmembrane Trx-related protein

Official Symbol: TMX1

Accession Number(s): NP_110382.3

Human GeneID(s): [81542](#)

Immunogen

Peptide with sequence C-RSLGPSLATDKS, from the C Terminus of the protein sequence according to NP_110382.3.

Please note the [peptide](#) is available for sale.

Purification and Storage

Purified from goat serum by ammonium sulphate precipitation followed by antigen affinity chromatography using the immunizing peptide.

Supplied at 0.5 mg/ml in Tris saline, 0.02% sodium azide, pH7.3 with 0.5% bovine serum albumin.

Aliquot and store at -20°C. Minimize freezing and thawing.

Applications Tested

Peptide ELISA: antibody detection limit dilution 1:64000.

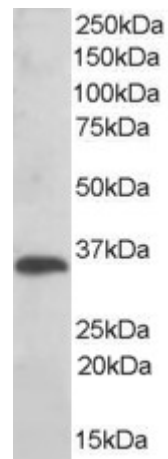
Western blot: Approx 35kDa band observed in Human Liver lysates (calculated MW of 31.8kDa according to NP_110382.3). Recommended concentration: 0.01-0.03µg/ml.

IHC: In paraffin embedded Human Spleen shows textured staining in the cytoplasm of some splenocytes. Recommended concentration, 3-6µg/ml.

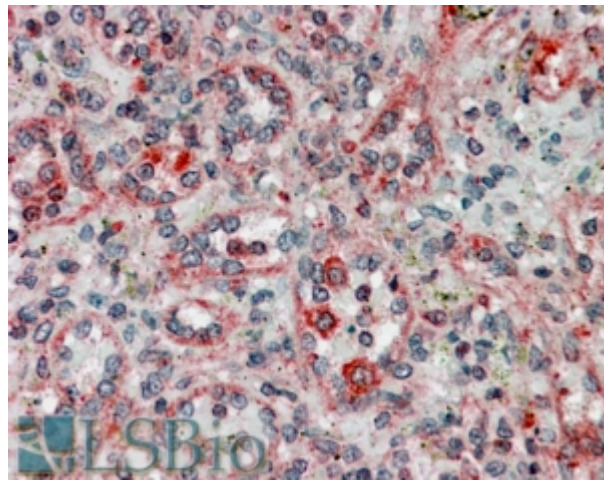
Species Reactivity

Tested: Human

Expected from sequence similarity: Human



EB05086 (0.01 μ g/ml) staining of Human Liver lysate (35 μ g protein in RIPA buffer). Primary incubation was 1 hour. Detected by chemiluminescence.



EB05086 (3.8 μ g/ml) staining of paraffin embedded Human Spleen Steamed antigen retrieval with citrate buffer pH 6, AP-staining.