

## UK Office

### Everest Biotech Ltd

Cherwell Innovation Centre  
77 Heyford Park  
Upper Heyford  
Oxfordshire  
OX25 5HD  
UK

Enquiries:

[info@everestbiotech.com](mailto:info@everestbiotech.com)

Sales:

[sales@everestbiotech.com](mailto:sales@everestbiotech.com)

Tech support:

[support@everestbiotech.com](mailto:support@everestbiotech.com)

Tel: +44 (0)1869 238326

[www.everestbiotech.com](http://www.everestbiotech.com)

**Research Use Only. Not for  
diagnostic or therapeutic use.**

## EB09832 - Goat Anti-TTLL4 Antibody

Size: 100µg specific antibody in 200µl



### Target Protein

**Principal Names:** KIAA0173, OTTHUMP00000164099, tubulin tyrosine ligase-like family, member 4, TTLL4

**Official Symbol:** TTLL4

**Accession Number(s):** NP\_055455.3

**Human GeneID(s):** [9654](#)

**Non-Human GeneID(s):** 67534 (mouse), 690512 (rat)

### Immunogen

Peptide with sequence C-DSQDPTKEIRFTE, from the internal region of the protein sequence according to NP\_055455.3.

Please note the [peptide](#) is available for sale.

### Purification and Storage

Purified from goat serum by ammonium sulphate precipitation followed by antigen affinity chromatography using the immunizing peptide.

Supplied at 0.5 mg/ml in Tris saline, 0.02% sodium azide, pH7.3 with 0.5% bovine serum albumin.

Aliquot and store at -20°C. Minimize freezing and thawing.

### Applications Tested

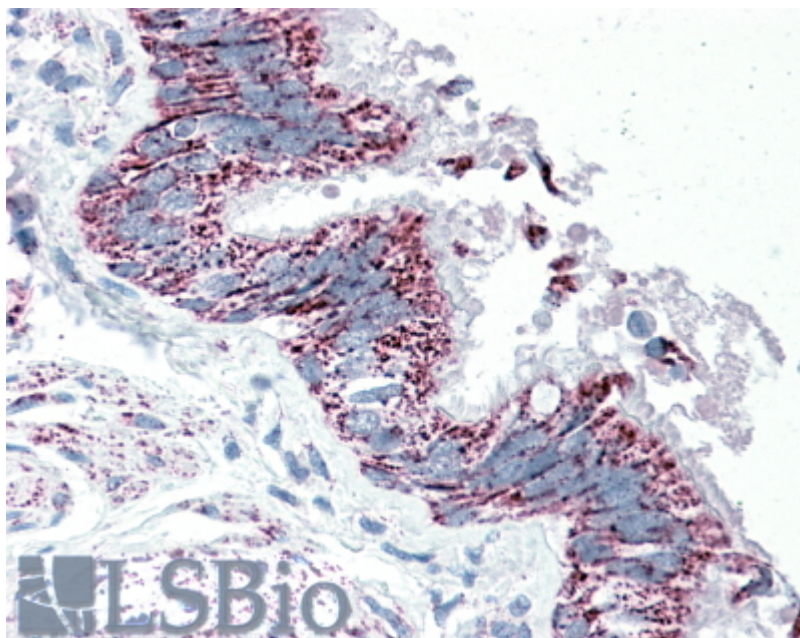
**Peptide ELISA:** antibody detection limit dilution 1:32000.

**IHC:** In paraffin embedded Human Lung shows cytoplasm staining in the respiratory epithelium of the bronchus. Recommended concentration, 5-10µg/ml.

### Species Reactivity

**Tested:** Human

**Expected from sequence similarity:** Human, Mouse, Rat, Cow



EB09832 (5µg/ml) staining of paraffin embedded Human Bronchus. Steamed antigen retrieval with citrate buffer pH 6, AP-staining.