



UK Office

Everest Biotech Ltd

Cherwell Innovation Centre
77 Heyford Park
Upper Heyford
Oxfordshire
OX25 5HD
UK

Enquiries:

info@everestbiotech.com

Sales:

sales@everestbiotech.com

Tech support:

support@everestbiotech.com

Tel: +44 (0)1869 238326

www.everestbiotech.com

**Research Use Only. Not for
diagnostic or therapeutic use.**

EB09901 - Goat Anti-TRIM71 (aa390-402) Antibody

Size: 100µg specific antibody in 200µl



Target Protein

Principal Names: abnormal cell LINEage LIN-41, homolog of C. elegans Lin-41, LIN41, LIN-41, tripartite motif-containing 71, TRIM71

Official Symbol: TRIM71

Accession Number(s): NP_001034200.1

Human GeneID(s): [131405](#)

Non-Human GeneID(s): 636331 (mouse), 301042 (rat)

Immunogen

Peptide with sequence C-RQVKAKSLYLQVE, from the internal region of the protein sequence according to NP_001034200.1.

Please note the [peptide](#) is available for sale.

Purification and Storage

Purified from goat serum by ammonium sulphate precipitation followed by antigen affinity chromatography using the immunizing peptide.

Supplied at 0.5 mg/ml in Tris saline, 0.02% sodium azide, pH7.3 with 0.5% bovine serum albumin.

Aliquot and store at -20°C. Minimize freezing and thawing.

Applications Tested

Peptide ELISA: antibody detection limit dilution 1:8000.

Western blot: Approx 100kDa band observed in lysates of the cell lines HEK293 and NIH3T3 (calculated MW of 93.4kDa according to Human NP_001034200.1 and 92.1kDa according to Mouse NP_001035968.1). The observed molecular weight corresponds to findings with EB09902, a product of different design reacting to a different part of the same protein. Recommended concentration: 0.3-1µg/ml.

IHC: Paraffin embedded Human Brain (Cerebellum). Recommended concentration: 3.75µg/ml.

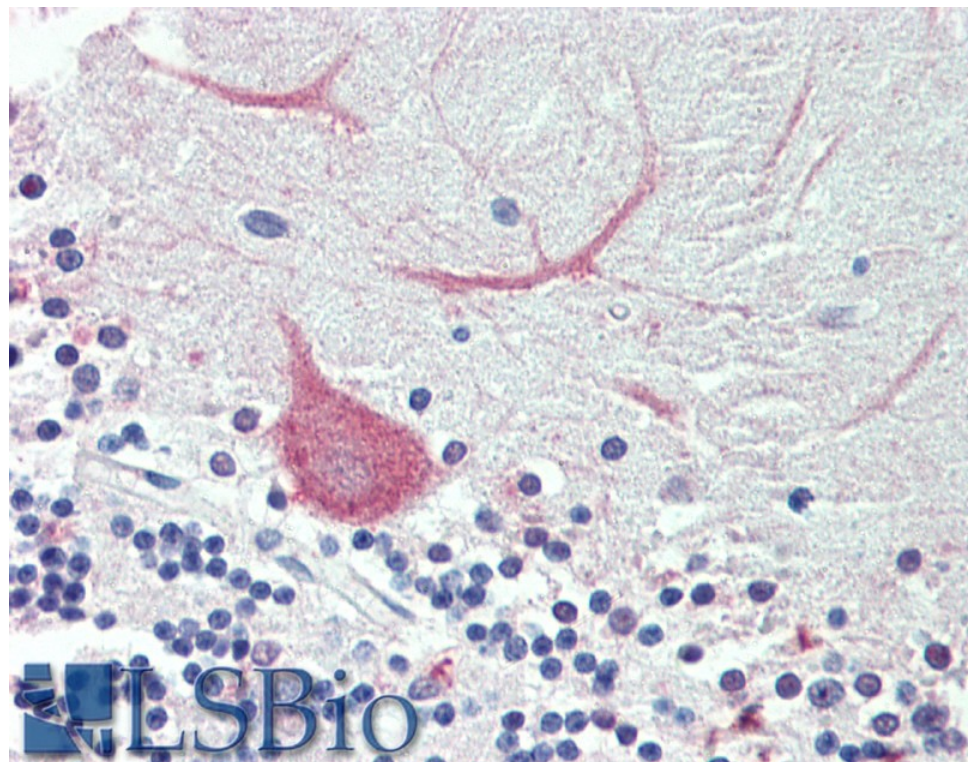
Species Reactivity

Tested: Human, Mouse

Expected from sequence similarity: Human, Mouse, Rat, Dog, Cow



EB09901 (0.3 μ g/ml) staining of HEK293 (A) and NIH3T3 (B) lysate (35 μ g protein in RIPA buffer). Primary incubation was 1 hour. Detected by chemiluminescence.



EB09901 (3.75 μ g/ml) staining of paraffin embedded Human Cerebellum. Steamed antigen retrieval with citrate buffer pH 6, AP-staining.