

## UK Office

### Everest Biotech Ltd

Cherwell Innovation Centre  
77 Heyford Park  
Upper Heyford  
Oxfordshire  
OX25 5HD  
UK

Enquiries:

[info@everestbiotech.com](mailto:info@everestbiotech.com)

Sales:

[sales@everestbiotech.com](mailto:sales@everestbiotech.com)

Tech support:

[support@everestbiotech.com](mailto:support@everestbiotech.com)

Tel: +44 (0)1869 238326

[www.everestbiotech.com](http://www.everestbiotech.com)

**Research Use Only. Not for  
diagnostic or therapeutic use.**

## EB07084 - Goat Anti-TRIM5 / RNF88 (alpha isoform) Antibody

Size: 100µg specific antibody in 200µl



### Target Protein

**Principal Names:** TRIM5, tripartite motif-containing 5, HGNC:16276, RNF88, tripartite motif protein 5, tripartite motif protein TRIM5, TRIM5alpha, OTTHUMP00000069812, tripartite motif protein TRIM, tripartite motif-containing protein 5 alpha

**Official Symbol:** TRIM5

**Accession Number(s):** NP\_149023.1

**Human GeneID(s):** [85363](#)

**Important Comments:** This antibody is expected to recognise isoform alpha (NP\_149023.1) only.

### Immunogen

Peptide with sequence CNIEKNENYQPK, from the internal region of the protein sequence according to NP\_149023.1.

Please note the [peptide](#) is available for sale.

### Purification and Storage

Purified from goat serum by ammonium sulphate precipitation followed by antigen affinity chromatography using the immunizing peptide.

Supplied at 0.5 mg/ml in Tris saline, 0.02% sodium azide, pH7.3 with 0.5% bovine serum albumin.

Aliquot and store at -20°C. Minimize freezing and thawing.

### Applications Tested

**Peptide ELISA:** antibody detection limit dilution 1:32000.

**Western blot:** Preliminary experiments gave an approx 37kDa band in Lysates of Human cell lines Daudi, Jurkat and MOLT4 after 0.3 µg/ml antibody staining. Please note that currently we cannot find an explanation in the literature for the band we observe given the calculated size of 56.3kDa according to NP\_149023.1. The 37kDa band was successfully blocked by incubation with the immunizing peptide. We would appreciate any feedback from people in the field - have any results been reported with other antibodies/lysates? Have any further splice variants/modified forms been reported?

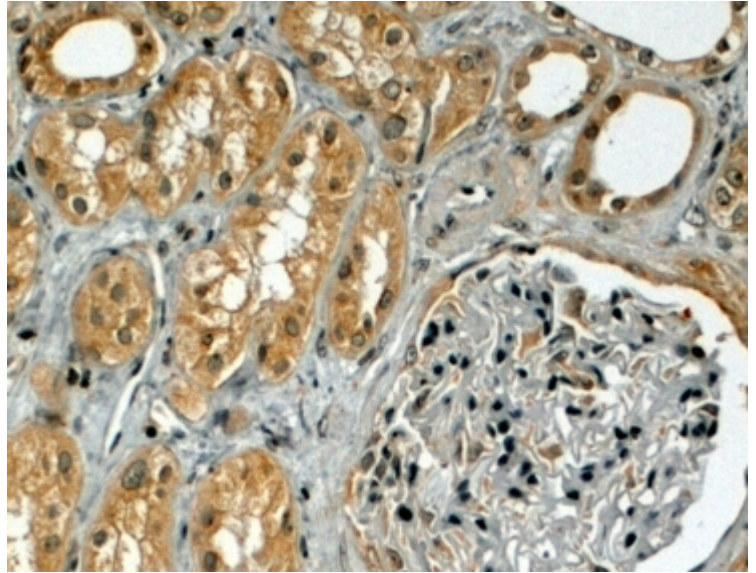
**IHC:** In paraffin embedded Human Kidney shows cytoplasm staining in PCT.

Recommended concentration, 3-6µg/ml.

### Species Reactivity

**Tested:**

**Expected from sequence similarity:** Human



EB07084 (4µg/ml) staining of paraffin embedded Human Kidney. Steamed antigen retrieval with citrate buffer pH 6, HRP-staining.