

UK Office

Everest Biotech Ltd

Cherwell Innovation Centre
77 Heyford Park
Upper Heyford
Oxfordshire
OX25 5HD
UK

Enquiries:

info@everestbiotech.com

Sales:

sales@everestbiotech.com

Tech support:

support@everestbiotech.com

Tel: +44 (0)1869 238326

www.everestbiotech.com

**Research Use Only. Not for
diagnostic or therapeutic use.**

EB11287 - Goat Anti-TRIM11 (aa249-263) Antibody

Size: 100µg specific antibody in 200µl



Target Protein

Principal Names: BIA1, E3 ubiquitin-protein ligase TRIM11, RING finger protein 92, RNF92, tripartite motif containing 11, tripartite motif-containing 11, tripartite motif-containing protein 11, TRIM11

Official Symbol: TRIM11

Accession Number(s): NP_660215.1

Human GeneID(s): [81559](#)

Immunogen

Peptide with sequence C-DALRRVQDVKLQPPE, from the internal region of the protein sequence according to NP_660215.1.

Please note the [peptide](#) is available for sale.

Purification and Storage

Purified from goat serum by ammonium sulphate precipitation followed by antigen affinity chromatography using the immunizing peptide.

Supplied at 0.5 mg/ml in Tris saline, 0.02% sodium azide, pH7.3 with 0.5% bovine serum albumin.

Aliquot and store at -20°C. Minimize freezing and thawing.

Applications Tested

Peptide ELISA: antibody detection limit dilution 1:32000.

Western blot: Approx 52kDa band observed in Human Spleen lysates (calculated MW of 52.8kDa according to NP_660215.1). Recommended concentration: 0.3-1µg/ml. Primary incubation was 1 hour.

IHC: Paraffin embedded Human Skeletal Muscle. Recommended concentration: 5µg/ml.

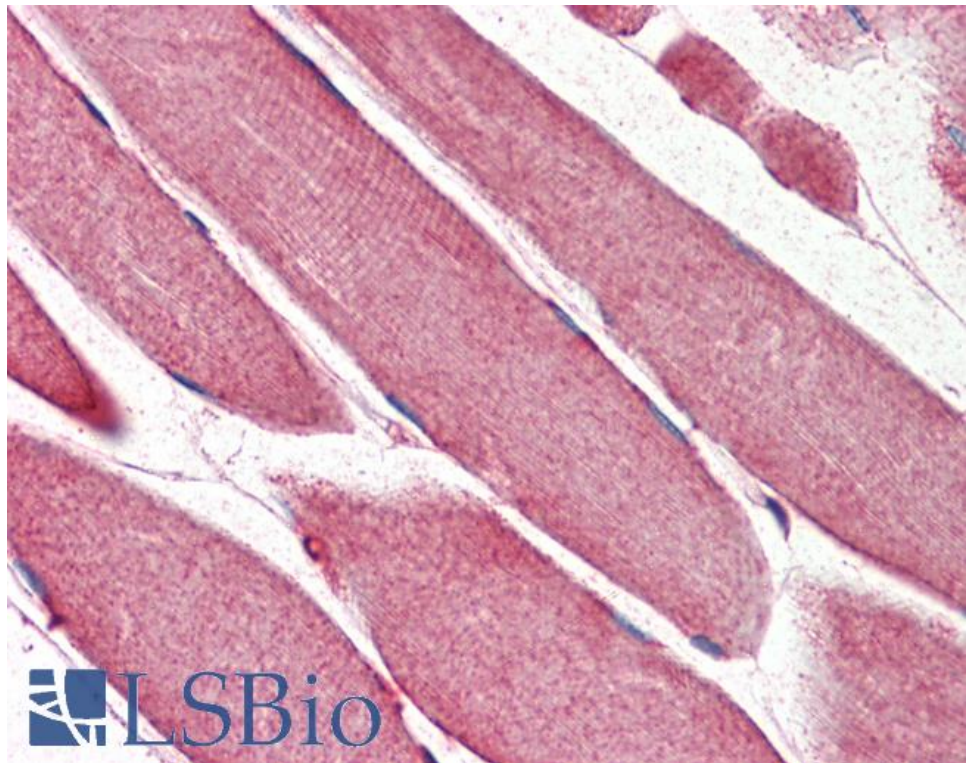
Species Reactivity

Tested: Human

Expected from sequence similarity: Human, Pig, Cow



EB11287 (0.3 μ g/ml) staining of Human Spleen lysate (35 μ g protein in RIPA buffer). Detected by chemiluminescence.



EB11287 (5 μ g/ml) staining of paraffin embedded Human Skeletal Muscle. Steamed antigen retrieval with citrate buffer pH 6, AP-staining.