

## UK Office

### Everest Biotech Ltd

Cherwell Innovation Centre  
77 Heyford Park  
Upper Heyford  
Oxfordshire  
OX25 5HD  
UK

Enquiries:

[info@everestbiotech.com](mailto:info@everestbiotech.com)

Sales:

[sales@everestbiotech.com](mailto:sales@everestbiotech.com)

Tech support:

[support@everestbiotech.com](mailto:support@everestbiotech.com)

Tel: +44 (0)1869 238326

[www.everestbiotech.com](http://www.everestbiotech.com)

**Research Use Only. Not for  
diagnostic or therapeutic use.**

## EB09630-T - Goat Anti-TRIB1 / SKIP1 Antibody - Trial

Size: 20µg specific antibody in 40µl



### Target Protein

**Principal Names:** TRIB1, tribbles homolog 1 (Drosophila), C8FW, GIG2, SKIP1, G-protein-coupled receptor induced protein, phosphoprotein regulated by mitogenic pathways

**Official Symbol:** TRIB1

**Accession Number(s):** NP\_079471.1

**Human GeneID(s):** [10221](#)

### Immunogen

Peptide with sequence C-KHYQDKIRPYIQLPS, from the internal region of the protein sequence according to NP\_079471.1.

Please note the [peptide](#) is available for sale.

### Purification and Storage

Purified from goat serum by ammonium sulphate precipitation followed by antigen affinity chromatography using the immunizing peptide.

Supplied at 0.5 mg/ml in Tris saline, 0.02% sodium azide, pH7.3 with 0.5% bovine serum albumin.

Aliquot and store at -20°C. Minimize freezing and thawing.

### Applications Tested

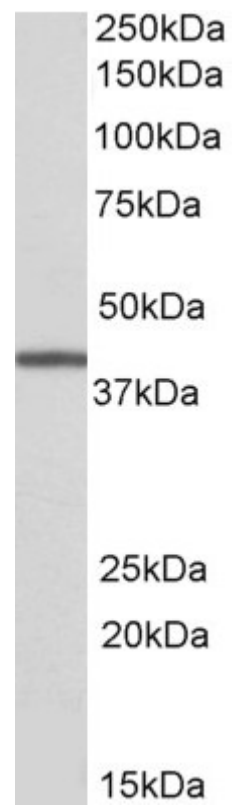
**Peptide ELISA:** antibody detection limit dilution 1:64000.

**Western blot:** Approx 40kDa band observed in Human Bone Marrow lysates (calculated MW of 41.0kDa according to NP\_079471.1). Recommended concentration: 0.3-1µg/ml.

### Species Reactivity

**Tested:** Human

**Expected from sequence similarity:** Human, Mouse, Rat, Dog, Cow, Pig



EB9630 (0.3 $\mu$ g/ml) staining of Human Bone Marrow lysate (35 $\mu$ g protein in RIPA buffer). Primary incubation was 1 hour. Detected by chemiluminescence.