

## UK Office

### Everest Biotech Ltd

Cherwell Innovation Centre  
77 Heyford Park  
Upper Heyford  
Oxfordshire  
OX25 5HD  
UK

Enquiries:

[info@everestbiotech.com](mailto:info@everestbiotech.com)

Sales:

[sales@everestbiotech.com](mailto:sales@everestbiotech.com)

Tech support:

[support@everestbiotech.com](mailto:support@everestbiotech.com)

Tel: +44 (0)1869 238326

[www.everestbiotech.com](http://www.everestbiotech.com)

**Research Use Only. Not for  
diagnostic or therapeutic use.**

## EB09547 - Goat Anti-TREML1 Antibody

Size: 100µg specific antibody in 200µl



### Target Protein

**Principal Names:** TREML1, triggering receptor expressed on myeloid cells-like 1, GLTL1825, MGC119173, PRO3438, TLT-1, TLT1, dJ238O23.3, OTTHUMP00000017858, TREM-like transcript 1

**Official Symbol:** TREML1

**Accession Number(s):** NP\_835468.1

**Human GeneID(s):** [340205](#)

**Important Comments:** This antibody may cross-react with mouse TREML1 (GeneID: 71326; MW: 34.28 kDa).

### Immunogen

Peptide with sequence CGPAQNPPNNQTPS, from the C Terminus of the protein sequence according to NP\_835468.1.

Please note the [peptide](#) is available for sale.

### Purification and Storage

Purified from goat serum by ammonium sulphate precipitation followed by antigen affinity chromatography using the immunizing peptide.

Supplied at 0.5 mg/ml in Tris saline, 0.02% sodium azide, pH7.3 with 0.5% bovine serum albumin.

Aliquot and store at -20°C. Minimize freezing and thawing.

### Applications Tested

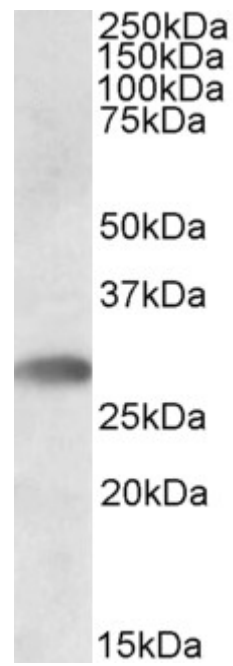
**Peptide ELISA:** antibody detection limit dilution 1:2000.

**Western blot:** Approx 30kDa band observed in Human Bone Marrow lysates (calculated MW of 32.7kDa according to NP\_835468.1). Recommended concentration: 0.3-1µg/ml.

### Species Reactivity

**Tested:** Human

**Expected from sequence similarity:** Human



EB09547 staining (0.5 $\mu$ g/ml) of Human Bone Marrow lysate (RIPA buffer, 35 $\mu$ g total protein per lane). Primary incubated for 1 hour. Detected by western blot using chemiluminescence.