

UK Office

Everest Biotech Ltd

Cherwell Innovation Centre
77 Heyford Park
Upper Heyford
Oxfordshire
OX25 5HD
UK

Enquiries:

info@everestbiotech.com

Sales:

sales@everestbiotech.com

Tech support:

support@everestbiotech.com

Tel: +44 (0)1869 238326

www.everestbiotech.com

**Research Use Only. Not for
diagnostic or therapeutic use.**

EB07922 - Goat Anti-Trem2 (mouse) Antibody

Size: 100µg specific antibody in 200µl



Target Protein

Principal Names: Trem2, triggering receptor expressed on myeloid cells 2, Trem2a, Trem2b, Trem2c, triggering receptor expressed on myeloid cells 2a, triggering receptor expressed on myeloid cells 2b, triggering receptor expressed on myeloid cells 2c

Official Symbol: Trem2

Accession Number(s): NP_112544.1

Non-Human GeneID(s): 83433 (mouse), 301227 (rat)

Immunogen

Peptide with sequence C-QVEHSTSRNQET, from the internal region of the protein sequence according to NP_112544.1.

Please note the [peptide](#) is available for sale.

Purification and Storage

Purified from goat serum by ammonium sulphate precipitation followed by antigen affinity chromatography using the immunizing peptide.

Supplied at 0.5 mg/ml in Tris saline, 0.02% sodium azide, pH7.3 with 0.5% bovine serum albumin.

Aliquot and store at -20°C. Minimize freezing and thawing.

Applications Tested

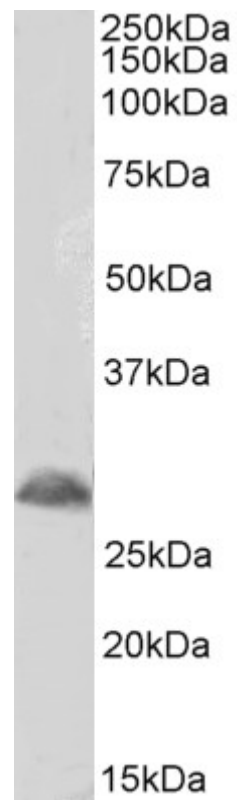
Peptide ELISA: antibody detection limit dilution 1:8000.

Western blot: Approx 28kDa band observed in Mouse Spinal Cord lysates (calculated MW of 24.5kDa according to NP_112544.1). Recommended concentration: 1-3µg/ml. Primary incubation was 1 hour. Preliminary testing was unsuccessful on Rat for this particular batch.

Species Reactivity

Tested: Mouse

Expected from sequence similarity: Mouse, Rat



EB07922 (1 μ g/ml) staining of Mouse Spinal Cord lysate (35 μ g protein in RIPA buffer). Detected by chemiluminescence.