

UK Office

Everest Biotech Ltd

Cherwell Innovation Centre
77 Heyford Park
Upper Heyford
Oxfordshire
OX25 5HD
UK

Enquiries:

info@everestbiotech.com

Sales:

sales@everestbiotech.com

Tech support:

support@everestbiotech.com

Tel: +44 (0)1869 238326

www.everestbiotech.com

**Research Use Only. Not for
diagnostic or therapeutic use.**

EB07171 - Goat Anti-TRAF2 Antibody

Size: 100µg specific antibody in 200µl



Target Protein

Principal Names: TRAF2, TNF receptor-associated factor 2, MGC:45012, TRAP, TRAP3, OTTHUMP00000064745, tumor necrosis factor type 2 receptor associated protein 3

Official Symbol: TRAF2

Accession Number(s): NP_066961.2

Human GeneID(s): [7186](#)

Non-Human GeneID(s): 22030 (mouse)

Immunogen

Peptide with sequence C-KMEAKNSYVRDD, from the C Terminus of the protein sequence according to NP_066961.2.

Please note the [peptide](#) is available for sale.

Purification and Storage

Purified from goat serum by ammonium sulphate precipitation followed by antigen affinity chromatography using the immunizing peptide.

Supplied at 0.5 mg/ml in Tris saline, 0.02% sodium azide, pH7.3 with 0.5% bovine serum albumin.

Aliquot and store at -20°C. Minimize freezing and thawing.

Applications Tested

Peptide ELISA: antibody detection limit dilution 1:128000.

Western blot: Approx 50kDa band observed in Human Ovary lysates (calculated MW of 55.9kDa according to NP_066961.2). Recommended concentration: 0.1-0.3µg/ml.

IHC: In paraffin embedded Human Kidney shows cytoplasm and select nuclear staining. Recommended concentration: 3-6µg/ml. Paraffin embedded Human Pancreas and Placenta. Recommended concentration: 3.75µg/ml.

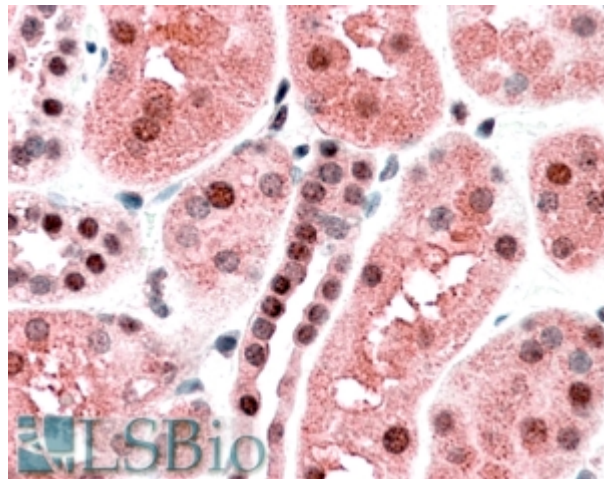
Species Reactivity

Tested: Human

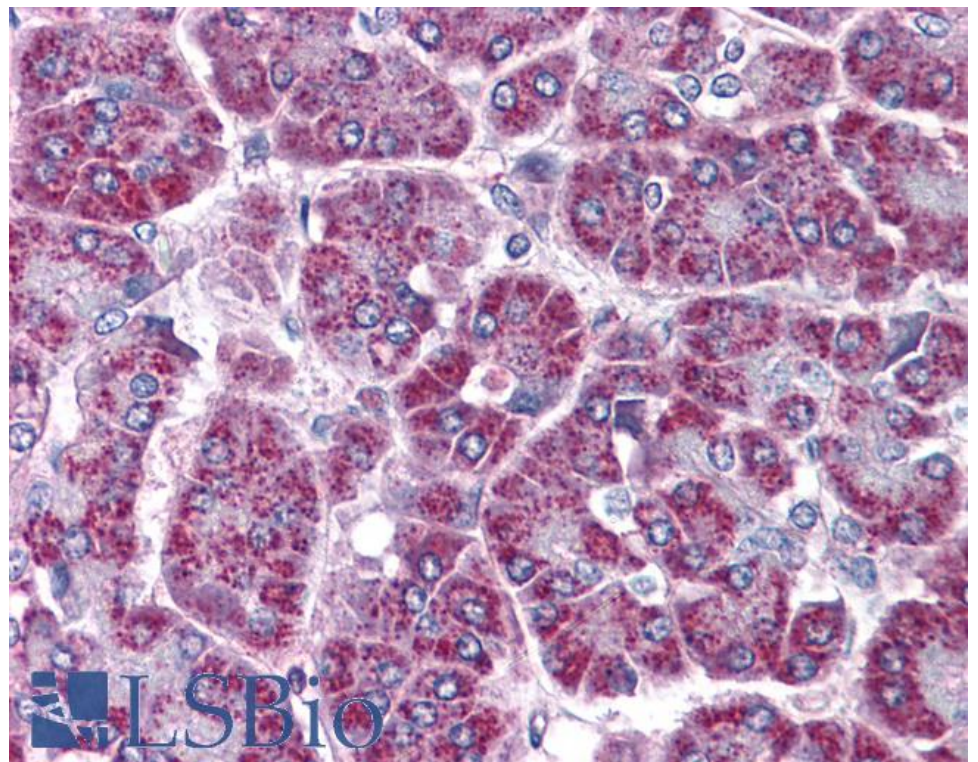
Expected from sequence similarity: Human, Mouse, Rat, Dog, Cow



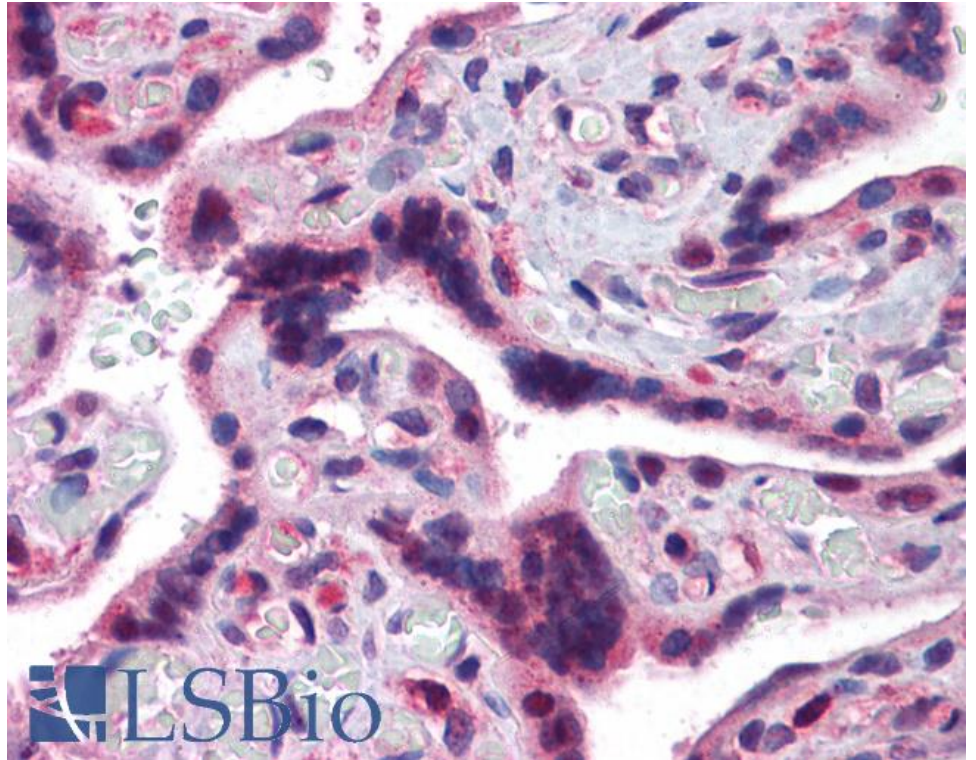
EB07171 (0.1 μ g/ml) staining of Human Ovary lysate (35 μ g protein in RIPA buffer). Primary incubation was 1 hour. Detected by chemiluminescence.



EB07171 (3.8 μ g/ml) staining of paraffin embedded Human Kidney. Steamed antigen retrieval with citrate buffer pH 6, AP-staining.



EB07171 (3.75µg/ml) staining of paraffin embedded Human Pancreas. Steamed antigen retrieval with citrate buffer pH 6, AP-staining.



EB07171 (3.75µg/ml) staining of paraffin embedded Human Placenta. Steamed antigen retrieval with citrate buffer pH 6, AP-staining.