

UK Office

Everest Biotech Ltd

Cherwell Innovation Centre
77 Heyford Park
Upper Heyford
Oxfordshire
OX25 5HD
UK

Enquiries:

info@everestbiotech.com

Sales:

sales@everestbiotech.com

Tech support:

support@everestbiotech.com

Tel: +44 (0)1869 238326

www.everestbiotech.com

**Research Use Only. Not for
diagnostic or therapeutic use.**

EB09800 - Goat Anti-TPPP/p25 Antibody

Size: 100µg specific antibody in 200µl



Target Protein

Principal Names: brain specific protein p25 alpha, glycogen synthase kinase 3 (GSK3) inhibitor p24, p24, p25, p25alpha, TPPP/p25, TPPP1, tubulin polymerization promoting protein, tubulin polymerization-promoting protein, TPPP

Official Symbol: TPPP

Accession Number(s): NP_008961.1

Human GeneID(s): [11076](#)

Non-Human GeneID(s): 72948 (mouse), 361466 (rat)

Immunogen

Peptide with sequence C-DPSKDRAAKRLSLES, from the internal region of the protein sequence according to NP_008961.1.

Please note the [peptide](#) is available for sale.

Purification and Storage

Purified from goat serum by ammonium sulphate precipitation followed by antigen affinity chromatography using the immunizing peptide.

Supplied at 0.5 mg/ml in Tris saline, 0.02% sodium azide, pH7.3 with 0.5% bovine serum albumin.

Aliquot and store at -20°C. Minimize freezing and thawing.

Applications Tested

Peptide ELISA: antibody detection limit dilution 1:32000.

Western blot: Approx 26kDa band observed in Human Brain (Cerebellum), Mouse and Rat Brain lysates (calculated MW of 23.7kDa according to NP_008961.1). The observed molecular weight corresponds to earlier findings in literature with different antibodies (Acevedo et al, Exp Cell Res. 2007 Dec 10;313(20):4091-106; PMID: 18028908).

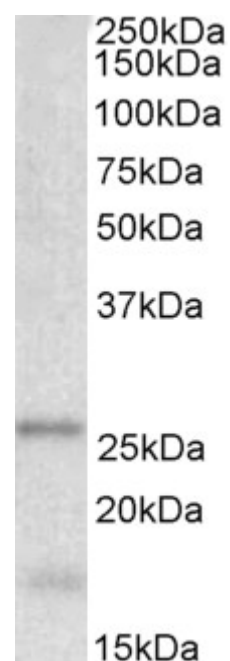
Recommended concentration: 0.001-0.01µg/ml. Primary incubation was 1 hour. An additional band of unknown identity was also consistently observed at 17kDa. This band was successfully blocked by incubation with the immunizing peptide.

IHC: In paraffin embedded Human Cerebellum shows strong staining of axonal bundles through the granular layer. Recommended concentration: 1-2µg/ml. Paraffin embedded Human Cortex. Recommended concentration: 3.75µg/ml.

Species Reactivity

Tested: Human, Mouse, Rat

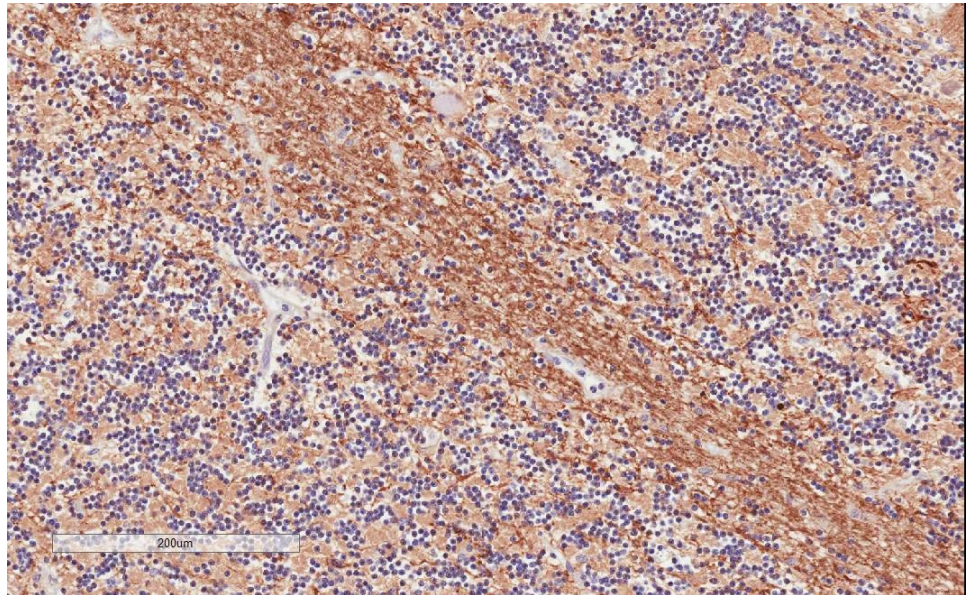
Expected from sequence similarity: Human



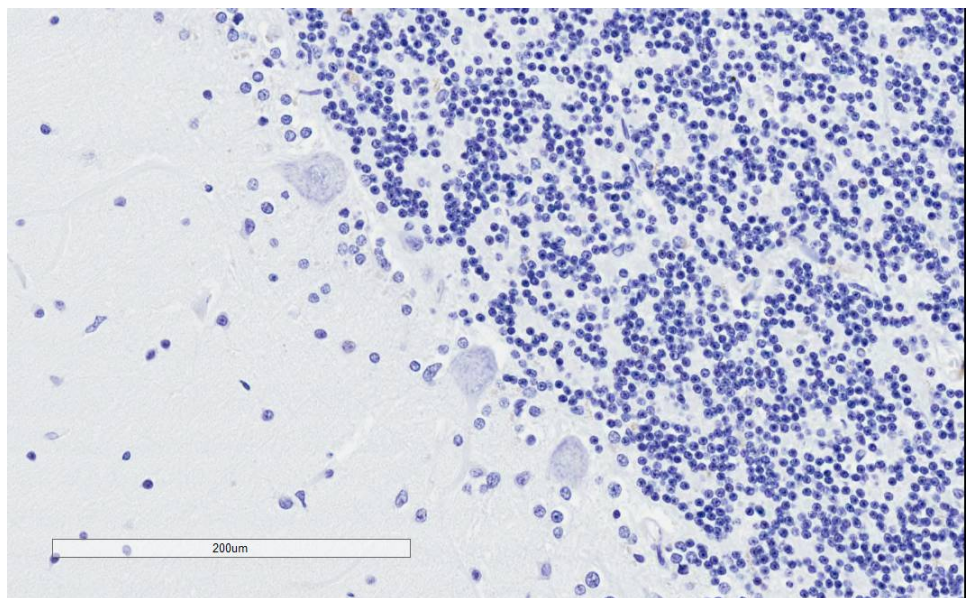
EB09800 (0.001µg/ml) staining of Human Cerebellum lysate (35µg protein in RIPA buffer). Detected by chemiluminescence.



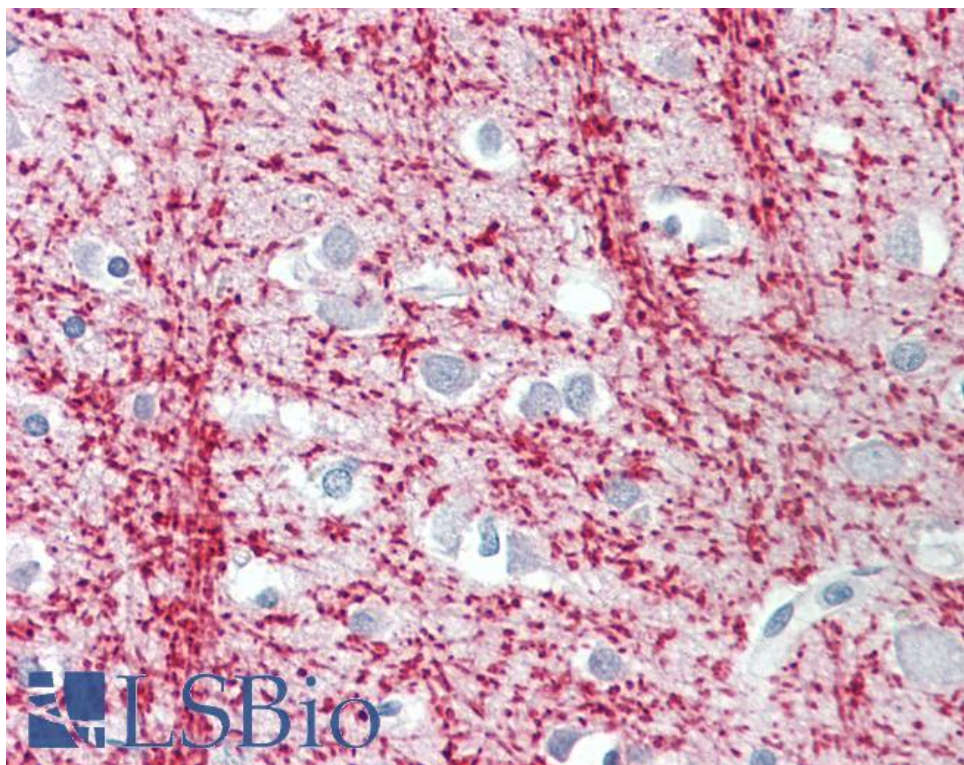
EB09800 (0.001µg/ml) staining of Mouse (A) and Rat (B) Brain lysate (35µg protein in RIPA buffer). Detected by chemiluminescence



EB09800 (2µg/ml) staining of paraffin embedded Human Cerebellum. Microwaved antigen retrieval with citrate buffer pH 6, HRP-staining.



EB09800 Negative Control showing staining of paraffin embedded Human Cerebellum, with no primary antibody.



EB09800 (3.75µg/ml) staining of paraffin embedded Human Cortex. Steamed antigen retrieval with citrate buffer pH 6, AP-staining.