

## UK Office

### Everest Biotech Ltd

Cherwell Innovation Centre  
77 Heyford Park  
Upper Heyford  
Oxfordshire  
OX25 5HD  
UK

Enquiries:

[info@everestbiotech.com](mailto:info@everestbiotech.com)

Sales:

[sales@everestbiotech.com](mailto:sales@everestbiotech.com)

Tech support:

[support@everestbiotech.com](mailto:support@everestbiotech.com)

Tel: +44 (0)1869 238326

[www.everestbiotech.com](http://www.everestbiotech.com)

**Research Use Only. Not for  
diagnostic or therapeutic use.**

## EB06974 - Goat Anti-TIRAP Antibody

Size: 100µg specific antibody in 200µl



### Target Protein

**Principal Names:** TIRAP, toll-interleukin 1 receptor (TIR) domain containing adaptor protein, HGNC:17192, FLJ42305, Mal, wyatt, MyD88 adapter-like protein, TIR domain-containing adapter protein, Toll-interleukin 1 receptor (TIR) domain-containing adapter protein, Toll-interleukin 1 receptor domain-containing adaptor protein, adapter protein wyatt, OTTHUMP00000179130, Toll-like receptor adaptor protein

**Official Symbol:** TIRAP

**Accession Number(s):** NP\_001034750.1; NP\_683708.1

**Human GeneID(s):** [114609](#)

**Important Comments:** This antibody is expected to recognize both reported isoforms (NP\_001034750.1 and NP\_683708.1).

### Immunogen

Peptide with sequence C-QTLLKKPKKRPNSPE, from the internal region of the protein sequence according to NP\_001034750.1; NP\_683708.1.

Please note the [peptide](#) is available for sale.

### Purification and Storage

Purified from goat serum by ammonium sulphate precipitation followed by antigen affinity chromatography using the immunizing peptide.

Supplied at 0.5 mg/ml in Tris saline, 0.02% sodium azide, pH7.3 with 0.5% bovine serum albumin.

Aliquot and store at -20°C. Minimize freezing and thawing.

### Applications Tested

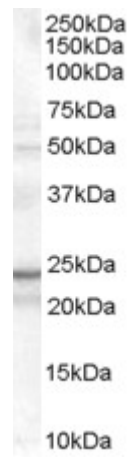
**Peptide ELISA:** antibody detection limit dilution 1:32000.

**Western blot:** Approx 24kDa band observed in lysates of Human myeloid erythroblast cell line K562 (calculated MW of 23.9kDa according to NP\_001034750.1 and 24.8kDa according to NP\_683708.1). Recommended concentration: 0.1-0.3µg/ml.

### Species Reactivity

**Tested:** Human

**Expected from sequence similarity:** Human



EB06974 (0.1µg/ml) staining of K562 cell lysate (35µg protein in RIPA buffer). Primary incubation was 1 hour.  
Detected by chemiluminescence.