

## UK Office

### Everest Biotech Ltd

Cherwell Innovation Centre  
77 Heyford Park  
Upper Heyford  
Oxfordshire  
OX25 5HD  
UK

Enquiries:

[info@everestbiotech.com](mailto:info@everestbiotech.com)

Sales:

[sales@everestbiotech.com](mailto:sales@everestbiotech.com)

Tech support:

[support@everestbiotech.com](mailto:support@everestbiotech.com)

Tel: +44 (0)1869 238326

[www.everestbiotech.com](http://www.everestbiotech.com)

**Research Use Only. Not for  
diagnostic or therapeutic use.**

## EB05807 - Goat Anti-TIF1A / TRIM24 Antibody

Size: 100µg specific antibody in 200µl



### Target Protein

**Principal Names:** TRIM24, TIF1, transcriptional intermediary factor 1, PTC6, TF1A, TIF1A, Tif1a, hTIF1, TIF1ALPHA, transcriptional intermediary factor 1 alpha, tripartite motif protein 24, tripartite motif-containing 24, RNF82

**Official Symbol:** TRIM24

**Accession Number(s):** NP\_056989.2; NP\_003843.3

**Human GeneID(s):** [8805](#)

**Important Comments:** This antibody is expected to recognise both reported isoforms, as represented by NP\_003843.3 and NP\_056989.2.

### Immunogen

Peptide with sequence C-KRLKSIEERQLLK, from the C Terminus of the protein sequence according to NP\_056989.2; NP\_003843.3.

Please note the [peptide](#) is available for sale.

### Purification and Storage

Purified from goat serum by ammonium sulphate precipitation followed by antigen affinity chromatography using the immunizing peptide.

Supplied at 0.5 mg/ml in Tris saline, 0.02% sodium azide, pH7.3 with 0.5% bovine serum albumin.

Aliquot and store at -20°C. Minimize freezing and thawing.

### Applications Tested

**Peptide ELISA:** antibody detection limit dilution 1:32000.

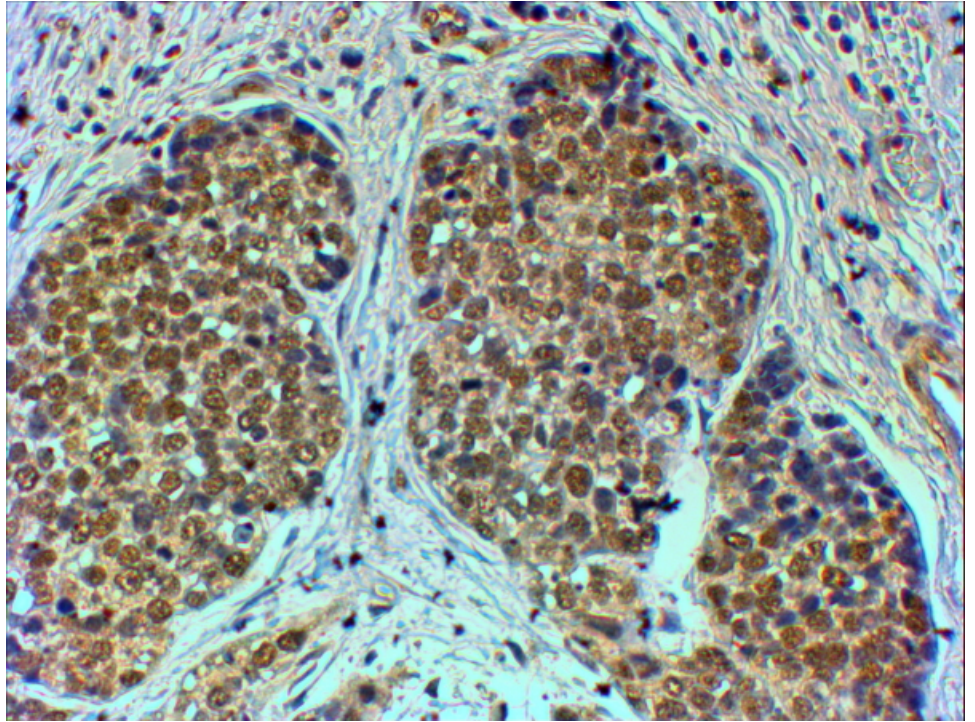
**Western blot:** Preliminary experiments gave an approx 120kDa band in human kidney and heart lysates at 1ug/ml, however prominent bands were also seen at 25kDa and 45kDa. Please note that currently we cannot find an explanation in the literature for some of the bands we observe given the predicted sizes of approx. 117kDa and 121kDa according to NP\_003843 and NP\_056989. We would appreciate any feedback from people in the field - have any results been reported with other antibodies/lysates? Have any further splice variants/modified forms been reported?

**IHC:** In paraffin embedded Human Breast cancer shows nuclear staining in the distorted lobules. Recommended concentration, 4-6µg/ml.

### Species Reactivity

**Tested:** Human

**Expected from sequence similarity:** Human, Cow



EB05807 (4µg/ml) staining of paraffin embedded Human Breast cancer. Steamed antigen retrieval with citrate buffer pH 6, HRP-staining.