

UK Office

Everest Biotech Ltd

Cherwell Innovation Centre
77 Heyford Park
Upper Heyford
Oxfordshire
OX25 5HD
UK

Enquiries:

info@everestbiotech.com

Sales:

sales@everestbiotech.com

Tech support:

support@everestbiotech.com

Tel: +44 (0)1869 238326

www.everestbiotech.com

**Research Use Only. Not for
diagnostic or therapeutic use.**

EB07852 - Goat Anti-TGM2 Antibody

Size: 100µg specific antibody in 200µl



Target Protein

Principal Names: TGM2, transglutaminase 2 (C polypeptide, protein-glutamine-gamma-glutamyltransferase), TG2, TGC, C polypeptide, TGase C, TGase-H, protein-glutamine-gamma-glutamyltransferase, tissue transglutaminase, transglutaminase 2, transglutaminase C

Official Symbol: TGM2

Accession Number(s): NP_004604.2

Human GeneID(s): [7052](#)

Important Comments: This antibody is expected to recognise isoform a (NP_004604.2) only.

Immunogen

Peptide with sequence C-ESDKLKAVKGFRN, from the C Terminus of the protein sequence according to NP_004604.2.

Please note the [peptide](#) is available for sale.

Purification and Storage

Purified from goat serum by ammonium sulphate precipitation followed by antigen affinity chromatography using the immunizing peptide.

Supplied at 0.5 mg/ml in Tris saline, 0.02% sodium azide, pH7.3 with 0.5% bovine serum albumin.

Aliquot and store at -20°C. Minimize freezing and thawing.

Applications Tested

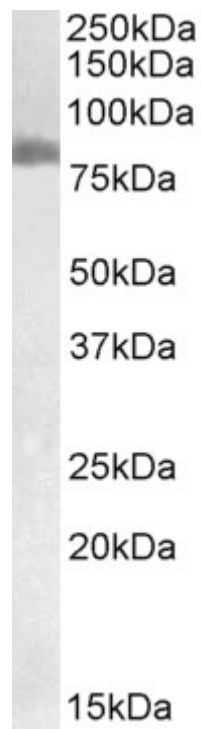
Peptide ELISA: antibody detection limit dilution 1:128000.

Western blot: Approx 80kDa band observed in Human Pancreas cancer lysates (calculated MW of 77.3kDa according to NP_004604.2). Recommended concentration: 0.05-0.2µg/ml.

Species Reactivity

Tested: Human

Expected from sequence similarity: Human, Mouse, Rat, Dog, Cow



EB07852 (0.05µg/ml) staining of Human Pancreas cancer lysate (35µg protein in RIPA buffer). Primary incubation was 1 hour. Detected by chemiluminescence.