

UK Office

Everest Biotech Ltd

Cherwell Innovation Centre
77 Heyford Park
Upper Heyford
Oxfordshire
OX25 5HD
UK

Enquiries:

info@everestbiotech.com

Sales:

sales@everestbiotech.com

Tech support:

support@everestbiotech.com

Tel: +44 (0)1869 238326

www.everestbiotech.com

**Research Use Only. Not for
diagnostic or therapeutic use.**

EB05325 - Goat Anti-TERF1 / PIN2 Antibody

Size: 100µg specific antibody in 200µl



Target Protein

Principal Names: TERF1, PIN2, TRF, TRF1, TRBF1, hTRF1-AS, telomeric repeat binding factor (NIMA-interacting) 1, Telomeric repeat binding factor 1, telomeric repeat binding protein 1, FLJ41416, t-TRF1

Official Symbol: TERF1

Accession Number(s): NP_003209.2; NP_059523.2

Human GeneID(s): [7013](#)

Important Comments: This antibody is expected to recognise isoform 1 (NP_059523.2) and isoform 2 (NP_003209.2).

Immunogen

Peptide with sequence C-TMKKLLISSDSED, from the C Terminus of the protein sequence according to NP_003209.2; NP_059523.2.

Please note the [peptide](#) is available for sale.

Purification and Storage

Purified from goat serum by ammonium sulphate precipitation followed by antigen affinity chromatography using the immunizing peptide.

Supplied at 0.5 mg/ml in Tris saline, 0.02% sodium azide, pH7.3 with 0.5% bovine serum albumin.

Aliquot and store at -20°C. Minimize freezing and thawing.

Applications Tested

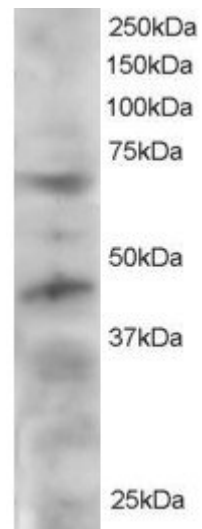
Peptide ELISA: antibody detection limit dilution 1:8000.

Western blot: Approx 60-65kDa and 45kDa bands seen in HeLa lysate. Recommended for use at 1-3µg/ml.

Species Reactivity

Tested: Human

Expected from sequence similarity: Human, Pig, Cow



EB05325 staining (2 μ g/ml) of HeLa lysate (RIPA buffer, 30 μ g total protein per lane). Primary incubated for 12 hour. Detected by western blot using chemiluminescence.