

UK Office

Everest Biotech Ltd

Cherwell Innovation Centre
77 Heyford Park
Upper Heyford
Oxfordshire
OX25 5HD
UK

Enquiries:

info@everestbiotech.com

Sales:

sales@everestbiotech.com

Tech support:

support@everestbiotech.com

Tel: +44 (0)1869 238326

www.everestbiotech.com

**Research Use Only. Not for
diagnostic or therapeutic use.**

EB07587 - Goat Anti-TCF3 / ITF1 Antibody

Size: 100µg specific antibody in 200µl



Target Protein

Principal Names: TCF3, ITF1, transcription factor 3 (E2A immunoglobulin enhancer binding factors E12/E47), E2A, MGC129647, MGC129648, E2A immunoglobulin enhancer-binding factor E12/E47, immunoglobulin transcription factor 1, kappa-E2-binding factor, transcription factor 3, transcription factor E2-alpha, bHLHb21, class B basic helix-loop-helix protein 21, E2A, E47, helix-loop-helix protein HE47, negative vitamin D response element-binding protein, NOL1-TCF3 fusion, transcription factor 3 variant 3, transcription factor ITF-1, VDIR, VDR interacting repressor, vitamin D receptor-interacting repressor

Official Symbol: TCF3

Accession Number(s): NP_003191.1

Human GeneID(s): [6929](#)

Important Comments: This antibody is expected to recognize reported isoform E12 (NP_003191.1) only.

Immunogen

Peptide with sequence C-KAPRARTSPDEDED, from the internal region of the protein sequence according to NP_003191.1.

Please note the [peptide](#) is available for sale.

Purification and Storage

Purified from goat serum by ammonium sulphate precipitation followed by antigen affinity chromatography using the immunizing peptide.

Supplied at 0.5 mg/ml in Tris saline, 0.02% sodium azide, pH7.3 with 0.5% bovine serum albumin.

Aliquot and store at -20°C. Minimize freezing and thawing.

Applications Tested

Peptide ELISA: antibody detection limit dilution 1:128000.

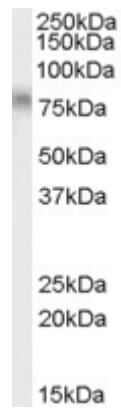
Western blot: Approx 75kDa band observed in lysates of cell line Daudi (calculated MW of 67.6kDa according to NP_003191.1). Recommended concentration: 0.01-0.03µg/ml.

IHC: In paraffin embedded Human Kidney shows strong nuclear staining in DCT cells. Recommended concentration, 3-5µg/ml.

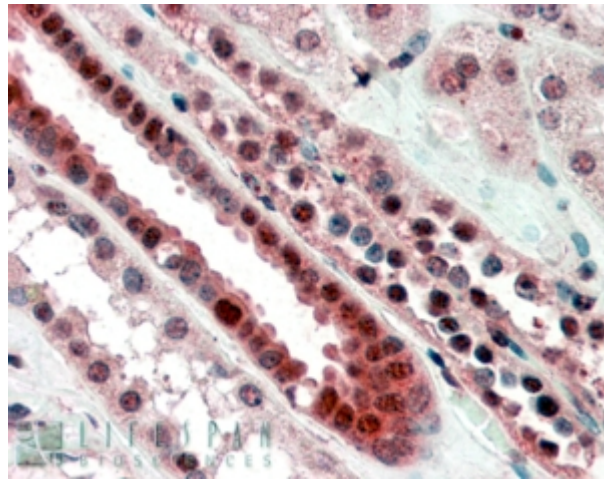
Species Reactivity

Tested: Human

Expected from sequence similarity: Human



EB07587 (0.01 μ g/ml) staining of Daudi cell lysate (35 μ g protein in RIPA buffer). Primary incubation was 1 hour.
Detected by chemiluminescence.



EB07587 (3.8 μ g/ml) staining of paraffin embedded Human Kidney. Steamed antigen retrieval with citrate buffer pH 6, AP-staining.