

## UK Office

### Everest Biotech Ltd

Cherwell Innovation Centre  
77 Heyford Park  
Upper Heyford  
Oxfordshire  
OX25 5HD  
UK

Enquiries:

[info@everestbiotech.com](mailto:info@everestbiotech.com)

Sales:

[sales@everestbiotech.com](mailto:sales@everestbiotech.com)

Tech support:

[support@everestbiotech.com](mailto:support@everestbiotech.com)

Tel: +44 (0)1869 238326

[www.everestbiotech.com](http://www.everestbiotech.com)

**Research Use Only. Not for  
diagnostic or therapeutic use.**

## EB07470 - Goat Anti-Syntenin / SDCBP Antibody

Size: 100µg specific antibody in 200µl



### Target Protein

**Principal Names:** SDCBP, Syntenin, syndecan binding protein (syntenin), MDA-9, ST1, SYCL, TACIP18, melanoma differentiation associated protein-9, pro-TGF-alpha cytoplasmic domain-interacting protein 18, scaffold protein Pbp1 syntenin

**Official Symbol:** SDCBP

**Accession Number(s):** NP\_005616.2; NP\_001007068.1; NP\_001007069; NP\_001007070.1; NP\_001007071.1

**Human GeneID(s):** [6386](#)

**Non-Human GeneID(s):** 53378 (mouse), 83841 (rat)

**Important Comments:** This antibody is expected to recognise isoform 1 (NP\_005616.2 and NP\_001007068.1) and isoform 3 (NP\_001007070.1 and NP\_001007071.1) only.

### Immunogen

Peptide with sequence SLEDLKVDKVIQAQ-C, from the N Terminus of the protein sequence according to NP\_005616.2; NP\_001007068.1; NP\_001007069; NP\_001007070.1; NP\_001007071.1.

Please note the [peptide](#) is available for sale.

### Purification and Storage

Purified from goat serum by ammonium sulphate precipitation followed by antigen affinity chromatography using the immunizing peptide.

Supplied at 0.5 mg/ml in Tris saline, 0.02% sodium azide, pH7.3 with 0.5% bovine serum albumin.

Aliquot and store at -20°C. Minimize freezing and thawing.

### Applications Tested

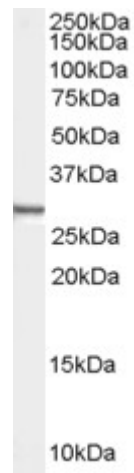
**Peptide ELISA:** antibody detection limit dilution 1:128000.

**Western blot:** Approx 28-30kDa band observed in lysates of cell lines HEK293 and A431 (calculated MW of 32.4kDa according to NP\_005616.2 and NP\_001007068.1 and of 32.3kDa according to NP\_001007070.1 and NP\_001007071.1). Recommended concentration: 0.01-0.03µg/ml.

### Species Reactivity

**Tested:** Human

**Expected from sequence similarity:** Human, Mouse, Rat, Dog



EB07470 (0.01µg/ml) staining of Human HEK293 cell lysate (35µg protein in RIPA buffer). Primary incubation was 1 hour. Detected by chemiluminescence.