

UK Office

Everest Biotech Ltd

Cherwell Innovation Centre
77 Heyford Park
Upper Heyford
Oxfordshire
OX25 5HD
UK

Enquiries:

info@everestbiotech.com

Sales:

sales@everestbiotech.com

Tech support:

support@everestbiotech.com

Tel: +44 (0)1869 238326

www.everestbiotech.com

**Research Use Only. Not for
diagnostic or therapeutic use.**

EB06309 - Goat Anti-SUFU Antibody

Size: 100µg specific antibody in 200µl



Target Protein

Principal Names: SUFU, SUFUH, SUFUXL, suppressor of fused homolog (Drosophila), suppressor of fused

Official Symbol: SUFU

Accession Number(s): NP_057253.2; NP_001171604.1

Human GeneID(s): [51684](#)

Non-Human GeneID(s): 24069 (mouse), 361769 (rat)

Important Comments: This antibody is expected to recognize both reported isoforms (NP_057253.2; NP_001171604.1)

Immunogen

Peptide with sequence AELRPSGAPGPT-C, from the N Terminus of the protein sequence according to NP_057253.2; NP_001171604.1.

Please note the [peptide](#) is available for sale.

Purification and Storage

Purified from goat serum by ammonium sulphate precipitation followed by antigen affinity chromatography using the immunizing peptide.

Supplied at 0.5 mg/ml in Tris saline, 0.02% sodium azide, pH7.3 with 0.5% bovine serum albumin.

Aliquot and store at -20°C. Minimize freezing and thawing.

Applications Tested

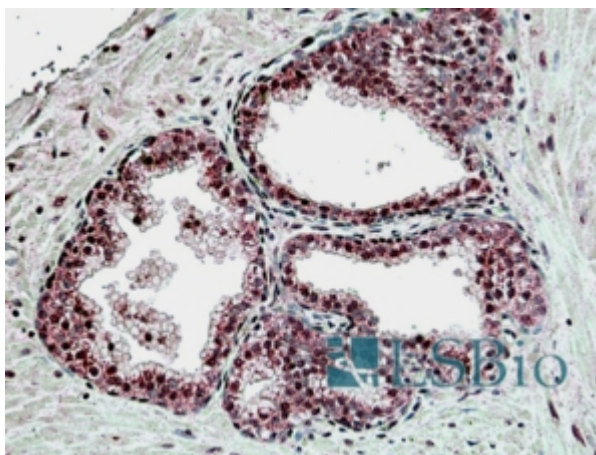
Peptide ELISA: antibody detection limit dilution 1:32000.

IHC: In paraffin embedded Human Prostate shows preferential nuclear staining in secretory cells of the glands. Recommended concentration, 1-2µg/ml.

Species Reactivity

Tested: Human

Expected from sequence similarity: Human, Mouse, Rat, Dog, Pig, Cow



EB06309 (3.8µg/ml) staining of paraffin embedded Human Prostate. Steamed antigen retrieval with citrate buffer pH 6, AP-staining.