

UK Office

Everest Biotech Ltd

Cherwell Innovation Centre
77 Heyford Park
Upper Heyford
Oxfordshire
OX25 5HD
UK

Enquiries:

info@everestbiotech.com

Sales:

sales@everestbiotech.com

Tech support:

support@everestbiotech.com

Tel: +44 (0)1869 238326

www.everestbiotech.com

**Research Use Only. Not for
diagnostic or therapeutic use.**

EB07214 - Goat Anti-STX6 Antibody

Size: 100µg specific antibody in 200µl



Target Protein

Principal Names: STX6, syntaxin 6, HGNC:11441

Official Symbol: STX6

Accession Number(s): NP_005810.1

Human GeneID(s): [10228](#)

Non-Human GeneID(s): 58244 (mouse), 60562 (rat)

Immunogen

Peptide with sequence C-QALAERKNRQA, from the internal region of the protein sequence according to NP_005810.1.

Please note the [peptide](#) is available for sale.

Purification and Storage

Purified from goat serum by ammonium sulphate precipitation followed by antigen affinity chromatography using the immunizing peptide.

Supplied at 0.5 mg/ml in Tris saline, 0.02% sodium azide, pH7.3 with 0.5% bovine serum albumin.

Aliquot and store at -20°C. Minimize freezing and thawing.

Applications Tested

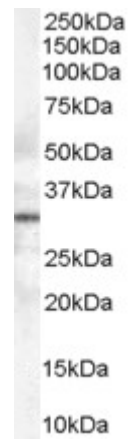
Peptide ELISA: antibody detection limit dilution 1:32000.

Western blot: Approx 30kDa band observed in Human Lymph Node lysates (calculated MW of 29.2kDa according to NP_005810.1). In transfected HEK293 transiently expressing Human STX6 a band of approx. 30kDa is observed. This band is not observed in the non-transfected HEK293. Recommended concentration: 0.3-1µg/ml.

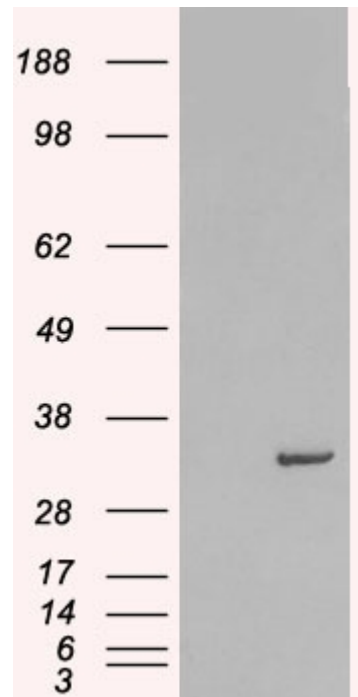
Species Reactivity

Tested: Human

Expected from sequence similarity: Human, Mouse, Rat, Dog



EB07214 (0.3 μ g/ml) staining of human lymph node lysate (35 μ g protein in RIPA buffer). Primary incubation was 1 hour. Detected by chemiluminescence.



HEK293 overexpressing Human STX6 (RC202951) and probed with EB07214 (mock transfection in first lane), tested by Origene.