

UK Office

Everest Biotech Ltd

Cherwell Innovation Centre
77 Heyford Park
Upper Heyford
Oxfordshire
OX25 5HD
UK

Enquiries:

info@everestbiotech.com

Sales:

sales@everestbiotech.com

Tech support:

support@everestbiotech.com

Tel: +44 (0)1869 238326

www.everestbiotech.com

**Research Use Only. Not for
diagnostic or therapeutic use.**

EB07379-T - Goat Anti-STAT3 Antibody - Trial

Size: 20µg specific antibody in 40µl



Target Protein

Principal Names: STAT3, signal transducer and activator of transcription 3 (acute-phase response factor), APRF, FLJ20882, MGC16063, DNA-binding protein APRF, acute-phase response factor, signal transducer and activator of transcription 3

Official Symbol: STAT3

Accession Number(s): NP_644805.1; NP_003141.2; NP_998827.1

Human GeneID(s): [6774](#)

Non-Human GeneID(s): 20848 (mouse), 25125 (rat)

Important Comments: This antibody is expected to recognise all three reported isoforms (NP_644805.1, NP_003141.2 and NP_998827.1).

Immunogen

Peptide with sequence CRPESQEHPEADP, from the internal region of the protein sequence according to NP_644805.1; NP_003141.2; NP_998827.1.

Please note the [peptide](#) is available for sale.

Purification and Storage

Purified from goat serum by ammonium sulphate precipitation followed by antigen affinity chromatography using the immunizing peptide.

Supplied at 0.5 mg/ml in Tris saline, 0.02% sodium azide, pH7.3 with 0.5% bovine serum albumin.

Aliquot and store at -20°C. Minimize freezing and thawing.

Applications Tested

Peptide ELISA: antibody detection limit dilution 1:16000.

Western blot: Approx 90kDa band observed in Human Heart lysates (calculated MW of 88.1kDa according to NP_644805.1 and of NP_003141.2). Recommended concentration: 1-3µg/ml.

IHC: Paraffin embedded Human Kidney. Recommended concentration: 5µg/ml.

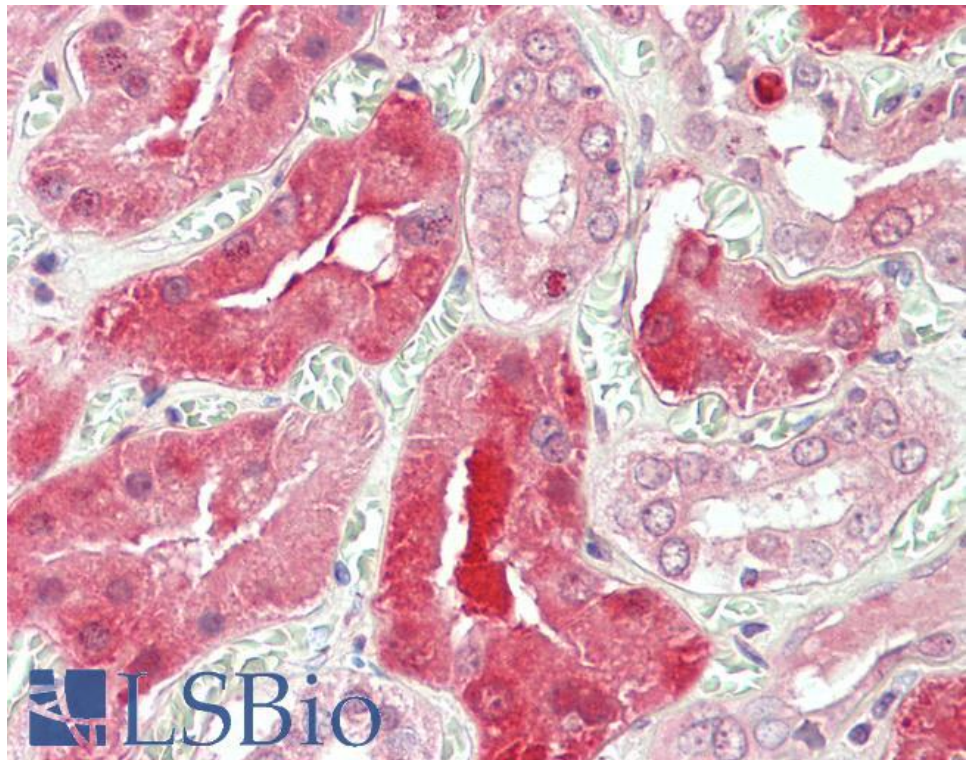
Species Reactivity

Tested: Human

Expected from sequence similarity: Human, Mouse, Rat, Dog



EB07379 (1 μ g/ml) staining of Human Heart lysate (35 μ g protein in RIPA buffer). Primary incubation was 1 hour.
Detected by chemiluminescence.



EB07379 (5 μ g/ml) staining of paraffin embedded Human Kidney. Steamed antigen retrieval with citrate buffer pH 6, AP-staining.