

## UK Office

### Everest Biotech Ltd

Cherwell Innovation Centre  
77 Heyford Park  
Upper Heyford  
Oxfordshire  
OX25 5HD  
UK

Enquiries:

[info@everestbiotech.com](mailto:info@everestbiotech.com)

Sales:

[sales@everestbiotech.com](mailto:sales@everestbiotech.com)

Tech support:

[support@everestbiotech.com](mailto:support@everestbiotech.com)

Tel: +44 (0)1869 238326

[www.everestbiotech.com](http://www.everestbiotech.com)

**Research Use Only. Not for  
diagnostic or therapeutic use.**

## EB11094 - Goat Anti-SRCAP (aa309-322) Antibody

Size: 100µg specific antibody in 200µl



### Target Protein

**Principal Names:** domino homolog 1, domino homolog 2, DOMO1, EAF1, FLJ44499, helicase SRCAP, KIAA0309, OTTHUMP00000208671, Snf2-related CBP activator protein, Snf2-related CREBBP activator protein, Swi2/Snf2-related ATPase homolog, domino homolog 1, SWR1, SRCAP

**Official Symbol:** SRCAP

**Accession Number(s):** NP\_006653.2

**Human GeneID(s):** [10847](#)

**Non-Human GeneID(s):** 100043597 (mouse), 361652 (rat)

### Immunogen

Peptide with sequence C-QEGNDAEAGRREIE, from the internal region (near N Trminus) of the protein sequence according to NP\_006653.2.

Please note the [peptide](#) is available for sale.

### Purification and Storage

Purified from goat serum by ammonium sulphate precipitation followed by antigen affinity chromatography using the immunizing peptide.

Supplied at 0.5 mg/ml in Tris saline, 0.02% sodium azide, pH7.3 with 0.5% bovine serum albumin.

Aliquot and store at -20°C. Minimize freezing and thawing.

### Applications Tested

**Peptide ELISA:** antibody detection limit dilution 1:128000.

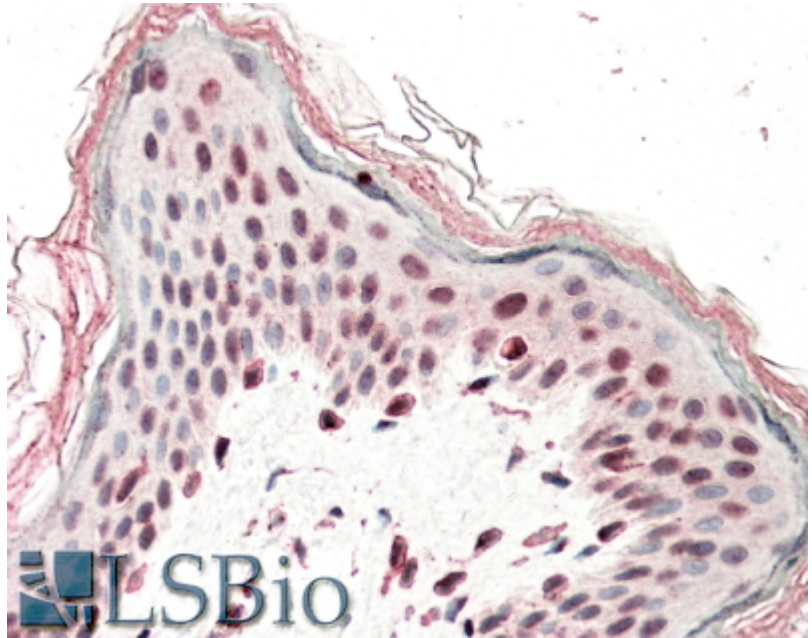
**IHC:** In paraffin embedded Human Skin shows nuclear staining in some keratinocytes.

Recommended concentration: 5-10µg/ml.

### Species Reactivity

**Tested:** Human

**Expected from sequence similarity:** Human, Mouse, Rat, Dog, Pig



EB11094 (5µg/ml) staining of paraffin embedded Human Skin. Steamed antigen retrieval with citrate buffer pH 6, AP-staining.