

## UK Office

### Everest Biotech Ltd

Cherwell Innovation Centre  
77 Heyford Park  
Upper Heyford  
Oxfordshire  
OX25 5HD  
UK

Enquiries:

[info@everestbiotech.com](mailto:info@everestbiotech.com)

Sales:

[sales@everestbiotech.com](mailto:sales@everestbiotech.com)

Tech support:

[support@everestbiotech.com](mailto:support@everestbiotech.com)

Tel: +44 (0)1869 238326

[www.everestbiotech.com](http://www.everestbiotech.com)

**Research Use Only. Not for  
diagnostic or therapeutic use.**

## EB07687 - Goat Anti-SORBS1/ponsin (internal region) Antibody

Size: 100µg specific antibody in 200µl



### Target Protein

**Principal Names:** SORBS1, sorbin and SH3 domain containing 1, CAP, DKFZp451C066, DKFZp586P1422, FLAF2, FLJ12406, KIAA1296, R85FL, SH3D5, SH3P12, SORB1, Fas-ligand associated factor 2, SH3-domain protein 5, SH3-domain protein 5 (ponsin), c-Cbl associated protein, ponsin

**Official Symbol:** SORBS1

**Accession Number(s):** NP\_006425.2; NP\_056200.1; NP\_001030126.1; NP\_001030127.1; NP\_001030128.1; NP\_079267.1; NP\_001030129.1

**Human GenelD(s):** [10580](#)

**Non-Human GenelD(s):** 20411 (mouse)

**Important Comments:** This antibody is expected to recognise all reported isoforms (NP\_006425.2 and NP\_056200.1 and NP\_001030126.1 and NP\_001030127.1 and NP\_001030128.1 and NP\_079267.1 and NP\_001030129.1)

### Immunogen

Peptide with sequence C-SERNDWEPPDKKVD, from the internal region of the protein sequence according to NP\_006425.2; NP\_056200.1; NP\_001030126.1; NP\_001030127.1; NP\_001030128.1; NP\_079267.1; NP\_001030129.1.

Please note the [peptide](#) is available for sale.

### Purification and Storage

Purified from goat serum by ammonium sulphate precipitation followed by antigen affinity chromatography using the immunizing peptide.

Supplied at 0.5 mg/ml in Tris saline, 0.02% sodium azide, pH7.3 with 0.5% bovine serum albumin.

Aliquot and store at -20°C. Minimize freezing and thawing.

### Applications Tested

**Peptide ELISA:** antibody detection limit dilution 1:32000.

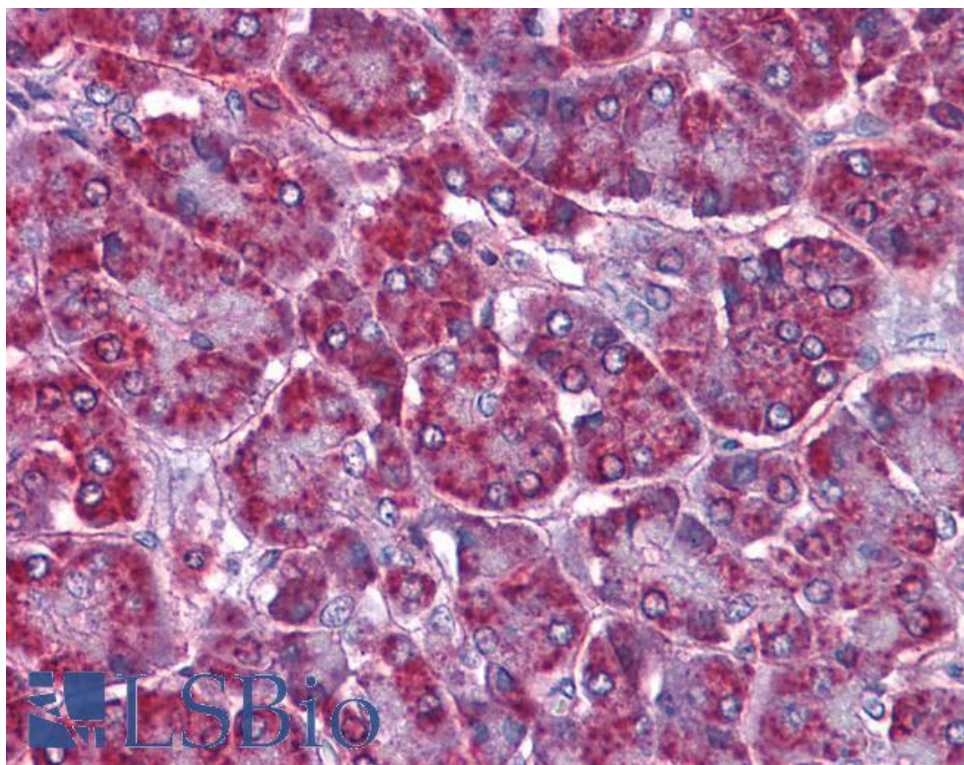
**Western blot:** Preliminary experiments gave an approx 65kDa band in Human Adipose lysates after 0.3µg/ml antibody staining. Please note that currently we cannot find an explanation in the literature for the band we observe given the calculated size of 76.6kDa according to NP\_006425.2 and higher sizes for other isoforms. The 65kDa band was successfully blocked by incubation with the immunizing peptide.

**IHC:** Paraffin embedded Human Pancreas and Liver. Recommended concentration: 3.75µg/ml.

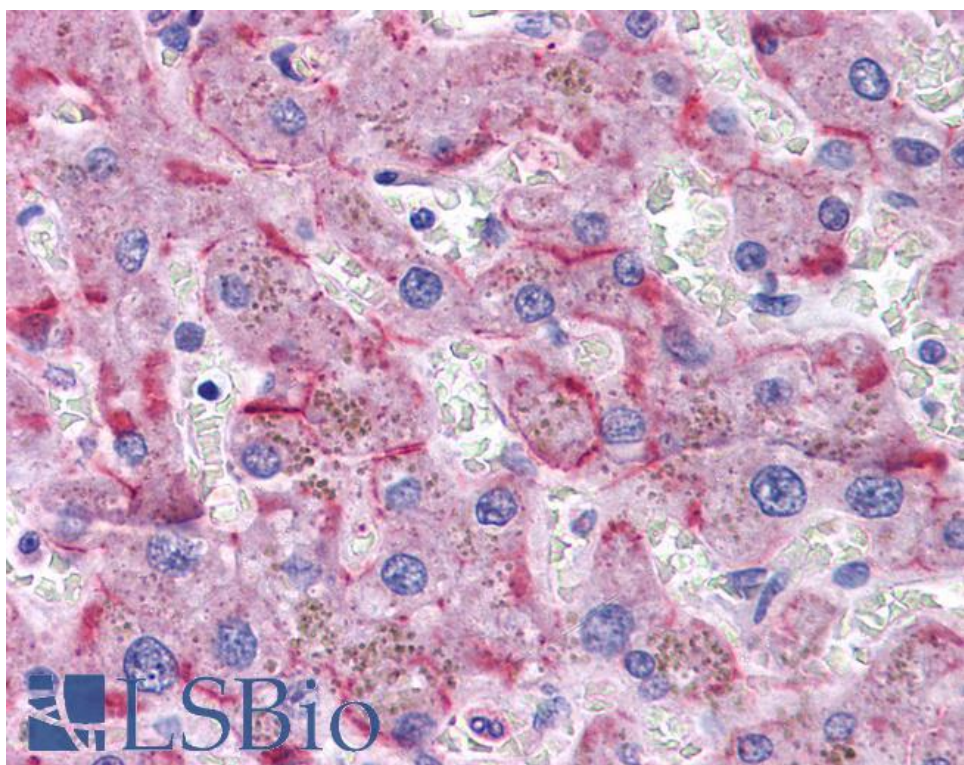
### Species Reactivity

**Tested:** Human

**Expected from sequence similarity:** Human, Mouse



EB07687 (3.75µg/ml) staining of paraffin embedded Human Pancreas. Steamed antigen retrieval with citrate buffer pH 6, AP-staining.



EB07687 (3.75µg/ml) staining of paraffin embedded Human Liver. Steamed antigen retrieval with citrate buffer pH 6, AP-staining.