

UK Office

Everest Biotech Ltd

Cherwell Innovation Centre
77 Heyford Park
Upper Heyford
Oxfordshire
OX25 5HD
UK

Enquiries:

info@everestbiotech.com

Sales:

sales@everestbiotech.com

Tech support:

support@everestbiotech.com

Tel: +44 (0)1869 238326

www.everestbiotech.com

**Research Use Only. Not for
diagnostic or therapeutic use.**

EB09032 - Goat Anti-SODD Antibody

Size: 100µg specific antibody in 200µl



Target Protein

Principal Names: BAG4, BCL2-associated athanogene 4, BAG-4, SODD, BAG-family molecular chaperone regulator-4, silencer of death domains

Official Symbol: BAG4

Accession Number(s): NP_004865.1

Human GeneID(s): [9530](#)

Immunogen

Peptide with sequence C-GNATSDHPNNQDQSS, from the internal region of the protein sequence according to NP_004865.1.

Please note the [peptide](#) is available for sale.

Purification and Storage

Purified from goat serum by ammonium sulphate precipitation followed by antigen affinity chromatography using the immunizing peptide.

Supplied at 0.5 mg/ml in Tris saline, 0.02% sodium azide, pH7.3 with 0.5% bovine serum albumin.

Aliquot and store at -20°C. Minimize freezing and thawing.

Applications Tested

Peptide ELISA: antibody detection limit dilution 1:8000.

Western blot: Approx. 60kDa band observed in cell lines HEK293 and HeLa lysates (calculated MW of 49.6kDa according to NP_004865.1). The observed molecular weight corresponds to earlier findings in literature with different antibodies (Takada et al, Mol Cell Biol. 2003 Jun;23(11):4026-33.; PMID: 12748303). Recommended concentration: 0.3-1µg/ml. Primary incubation was 1 hour. An additional band of unknown identity was also consistently observed at 20kDa. This band was successfully blocked by incubation with the immunizing peptide.

IHC: Paraffin embedded Human Placenta. Recommended concentration: 3.75µg/ml.

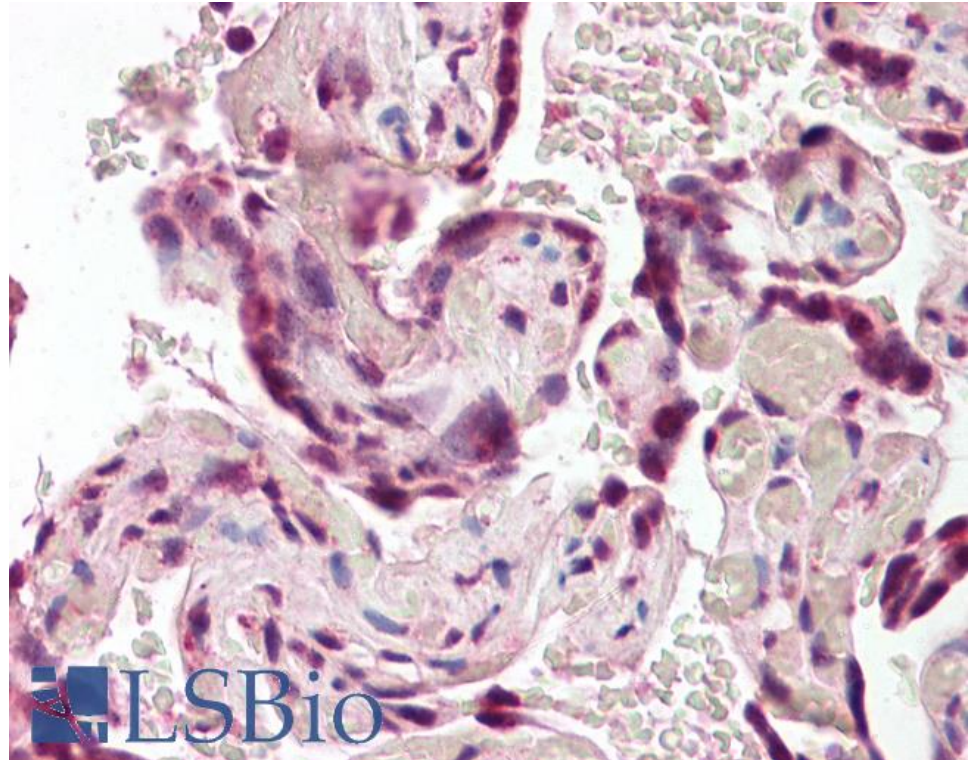
Species Reactivity

Tested: Human

Expected from sequence similarity: Human



EB09032 (1µg/ml) staining of HEK293 lysate (35µg protein in RIPA buffer). Detected by chemiluminescence.



EB09032 (3.75µg/ml) staining of paraffin embedded Human Placenta. Steamed antigen retrieval with citrate buffer pH 6, AP-staining.