



UK Office

Everest Biotech Ltd

Cherwell Innovation Centre
77 Heyford Park
Upper Heyford
Oxfordshire
OX25 5HD
UK

Enquiries:

info@everestbiotech.com

Sales:

sales@everestbiotech.com

Tech support:

support@everestbiotech.com

Tel: +44 (0)1869 238326

www.everestbiotech.com

**Research Use Only. Not for
diagnostic or therapeutic use.**

EB07208-B - Goat Anti-SOD1, Biotinylated Antibody

Size: 100µg specific antibody in 200µl



Target Protein

Principal Names: SOD1, superoxide dismutase 1, soluble, ALS, ALS1, HEL-S-44, IPOA, SOD, hSod1, Cu/Zn superoxide dismutase, SOD, soluble, epididymis secretory protein Li 44, indophenoloxidase A, superoxide dismutase, cystolic, HGNC:11179

Official Symbol: SOD1

Accession Number(s): NP_000445.1

Human GeneID(s): [6647](#)

Non-Human GeneID(s): 20655 (mouse), 24786 (rat)

Immunogen

Peptide with sequence C-SRKHGGPKDEERH., from the internal region of the protein sequence according to NP_000445.1.

Please note the [peptide](#) is available for sale.

Purification and Storage

Purified from goat serum by ammonium sulphate precipitation followed by antigen affinity chromatography using the immunizing peptide.

Supplied at 0.5 mg/ml in Tris saline, 0.02% sodium azide, pH7.3 with 0.5% bovine serum albumin.

Aliquot and store at -20°C. Minimize freezing and thawing.

Applications Tested

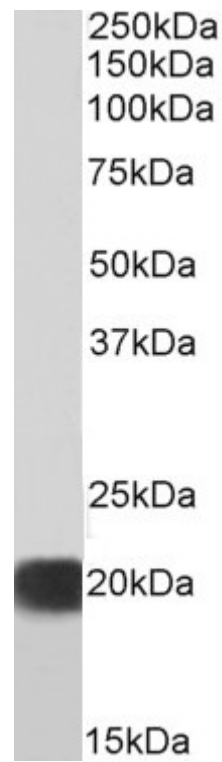
Peptide ELISA: antibody detection limit dilution 1:8000.

Western blot: Approx 20kDa band observed in lysates of cell line HEK293 (calculated MW of 15.9kDa according to NP_000445.1). See non-biotinylated parental product's datasheet for further QC data. Recommended concentration: 0.1-0.3µg/ml.

Species Reactivity

Tested: Human, Mouse, Rat

Expected from sequence similarity: Human



Biotinylated EB07208 (0.3µg/ml) staining of HEK293 lysate (35µg protein in RIPA buffer), exactly mirroring its parental non-biotinylated product. Primary incubation was 1 hour. Detected by chemiluminescence, using streptavidin-HRP and using NAP blocker as a substitute for skimmed milk.