



## UK Office

### Everest Biotech Ltd

Cherwell Innovation Centre  
77 Heyford Park  
Upper Heyford  
Oxfordshire  
OX25 5HD  
UK

Enquiries:

[info@everestbiotech.com](mailto:info@everestbiotech.com)

Sales:

[sales@everestbiotech.com](mailto:sales@everestbiotech.com)

Tech support:

[support@everestbiotech.com](mailto:support@everestbiotech.com)

Tel: +44 (0)1869 238326

[www.everestbiotech.com](http://www.everestbiotech.com)

**Research Use Only. Not for  
diagnostic or therapeutic use.**

## EB05040-B - Goat Anti-SOCS1, biotinylated Antibody

Size: 100µg specific antibody in 200µl



### Target Protein

**Principal Names:** SOCS1, suppressor of cytokine signaling 1, CIS1, CISH1, JAB, SOCS-1, SSI-1, SSI1, TIP3, JAK binding protein, STAT induced SH3 protein 1, STAT-induced STAT inhibitor 1, TIP-3, Tec-interacting protein 3, cytokine-inducible SH2 protein 1

**Official Symbol:** SOCS1

**Accession Number(s):** NP\_003736.1

**Human GeneID(s):** [8651](#)

**Non-Human GeneID(s):** 12703 (mouse)

### Immunogen

Peptide with sequence C-VLRDYLSFPFQI., from the C Terminus of the protein sequence according to NP\_003736.1.

Please note the [peptide](#) is available for sale.

### Purification and Storage

Purified from goat serum by ammonium sulphate precipitation followed by antigen affinity chromatography using the immunizing peptide.

Supplied at 0.5 mg/ml in Tris saline, 0.02% sodium azide, pH7.3 with 0.5% bovine serum albumin.

Aliquot and store at -20°C. Minimize freezing and thawing.

### Applications Tested

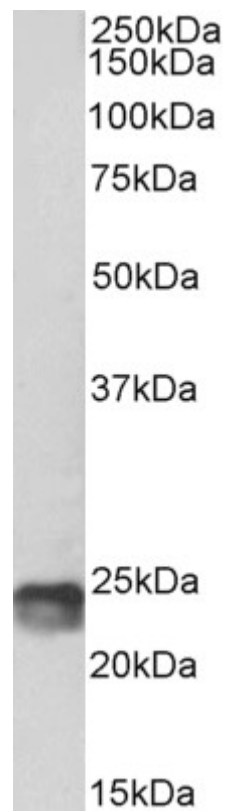
**Peptide ELISA:** antibody detection limit dilution 1:32000.

**Western blot:** Approx 24kDa band observed in Mouse Spleen lysates (calculated MW of 23.7kDa according to Mouse NP\_034026.1). See non-biotinylated parental product's datasheet for further QC data. Recommended concentration: 1-3µg/ml.

### Species Reactivity

**Tested:** Mouse, Human

**Expected from sequence similarity:** Human, Mouse, Rat, Dog, Cow



Biotinylated EB05040 (1µg/ml) staining of Mouse Spleen lysate (35µg protein in RIPA buffer). Primary incubation was 1 hour. Detected by chemiluminescence, using streptavidin-HRP and using NAP blocker as a substitute for skimmed milk.