

UK Office

Everest Biotech Ltd

Cherwell Innovation Centre
77 Heyford Park
Upper Heyford
Oxfordshire
OX25 5HD
UK

Enquiries:

info@everestbiotech.com

Sales:

sales@everestbiotech.com

Tech support:

support@everestbiotech.com

Tel: +44 (0)1869 238326

www.everestbiotech.com

**Research Use Only. Not for
diagnostic or therapeutic use.**

EB05916 - Goat Anti-SNX26 / TCGAP (C Terminus) Antibody

Size: 100µg specific antibody in 200µl



Target Protein

Principal Names: SNX26, TCGAP, FLJ39019, sorting nexin 26, likely ortholog of mouse TC10/CDC42 GTPase-activating protein, NOMA-GAP, neurite outgrowth multiadaptor RhoGAP protein

Official Symbol: SNX26

Accession Number(s): NP_443180.2

Human GeneID(s): [115703](#)

Non-Human GeneID(s): 233071 (mouse)

Immunogen

Peptide with sequence SWSLHSEGQTRSYC, from the C Terminus of the protein sequence according to NP_443180.2.

Please note the [peptide](#) is available for sale.

Purification and Storage

Purified from goat serum by ammonium sulphate precipitation followed by antigen affinity chromatography using the immunizing peptide.

Supplied at 0.5 mg/ml in Tris saline, 0.02% sodium azide, pH7.3 with 0.5% bovine serum albumin.

Aliquot and store at -20°C. Minimize freezing and thawing.

Applications Tested

Peptide ELISA: antibody detection limit dilution 1:8000.

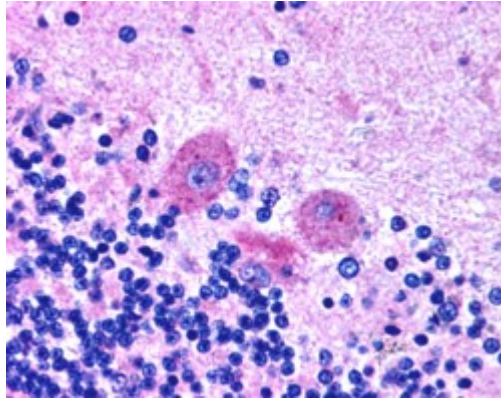
Western blot: Preliminary experiments gave an approx 75kDa band in Human Bone Marrow, Kidney, and Pancreas lysates after 1µg/ml antibody staining. EB05916 may detect the isoform A1A5D2 (UniProtKB) with a molecular weight of 81.4kDa which is similar in amino acid sequence to NP_443180.2 however lacking aa729-1268. Please note that currently we cannot find a precise explanation in the literature for the band we observe given the calculated size of 121kDa according to NP_443180.2. The 75kDa band was successfully blocked by incubation with the immunizing peptide. We would appreciate any feedback from people in the field - have any results been reported with other antibodies/lysates? Have any further splice variants/modified forms been reported?

IHC: In paraffin embedded Human Brain shows cytoplasm staining of Purkinje cells in Cerebellum. Recommended concentration, 2.5µg/ml.

Species Reactivity

Tested: Human

Expected from sequence similarity: Human, Mouse



EB05916 (2.5µg/ml) staining of paraffin embedded Human Brain. Steamed antigen retrieval with citrate buffer pH 6, AP-staining.