

UK Office

Everest Biotech Ltd

Cherwell Innovation Centre
77 Heyford Park
Upper Heyford
Oxfordshire
OX25 5HD
UK

Enquiries:

info@everestbiotech.com

Sales:

sales@everestbiotech.com

Tech support:

support@everestbiotech.com

Tel: +44 (0)1869 238326

www.everestbiotech.com

**Research Use Only. Not for
diagnostic or therapeutic use.**

EB06738 - Goat Anti-SNAP25 Antibody

Size: 100µg specific antibody in 200µl



Target Protein

Principal Names: SNAP25, synaptosomal-associated protein, 25kDa, HGNC:11132, FLJ23079, SNAP, SNAP-25, bA416N4.2, dJ1068F16.2, synaptosomal-associated protein 25, RIC-4, RIC4, SEC9, resistance to inhibitors of cholinesterase 4 homolog; synaptosomal-associated protein 25

Official Symbol: SNAP25

Accession Number(s): NP_003072.2; NP_570824.1

Human GeneID(s): [6616](#)

Non-Human GeneID(s): 20614 (mouse), 25012 (rat)

Important Comments: This antibody is expected to recognise both reported isoforms NP_003072.2 (SNAP25A) and NP_570824.1 (SNAP25B). Reported variants represent identical protein: NP_001309831.1, NP_003072.2 Reported variants represent identical protein: NP_001309834.1, NP_001309832.1, NP_001309833.1, NP_001309839.1, NP_001309836.1, NP_570824.1, NP_001309838.1, NP_001309835.1, NP_001309837.1

Immunogen

Peptide with sequence C-DEANQRATKMLGSG, from the C Terminus of the protein sequence according to NP_003072.2; NP_570824.1.

Please note the [peptide](#) is available for sale.

Purification and Storage

Purified from goat serum by ammonium sulphate precipitation followed by antigen affinity chromatography using the immunizing peptide.

Supplied at 0.5 mg/ml in Tris saline, 0.02% sodium azide, pH7.3 with 0.5% bovine serum albumin.

Aliquot and store at -20°C. Minimize freezing and thawing.

Applications Tested

Peptide ELISA: antibody detection limit dilution 1:128000.

Western blot: Approx 26kDa band observed in Human Brain and Mouse Brain lysates (calculated MW of 23.3kDa according to NP_003072.2 and NP_570824.1).

Recommended concentration: 0.01-0.03µg/ml.

IHC: In paraffin embedded Human Cerebellum shows strong axon staining, particularly in the granular region. Recommended concentration: 1-2µg/ml.

Species Reactivity

Tested: Human, Mouse

Expected from sequence similarity: Human, Mouse, Rat, Dog

Specific Reference

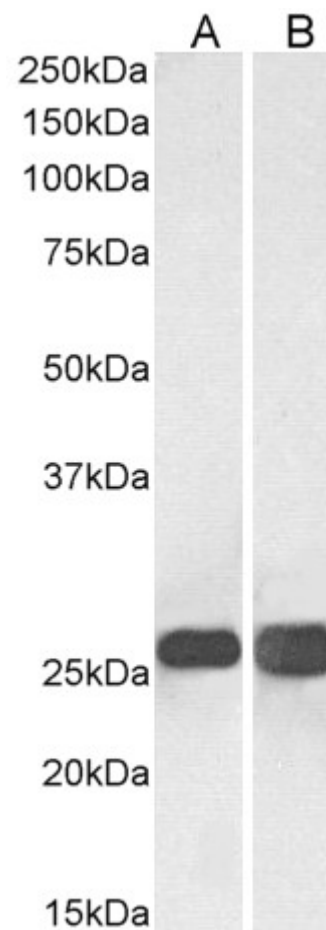
This antibody has been successfully used in WB and IF in Mouse:

Kawakami S, Ohmoto M, Itoh S, Yuasa R, Inagaki H, Nishimura E, Ito T, Misaka T.

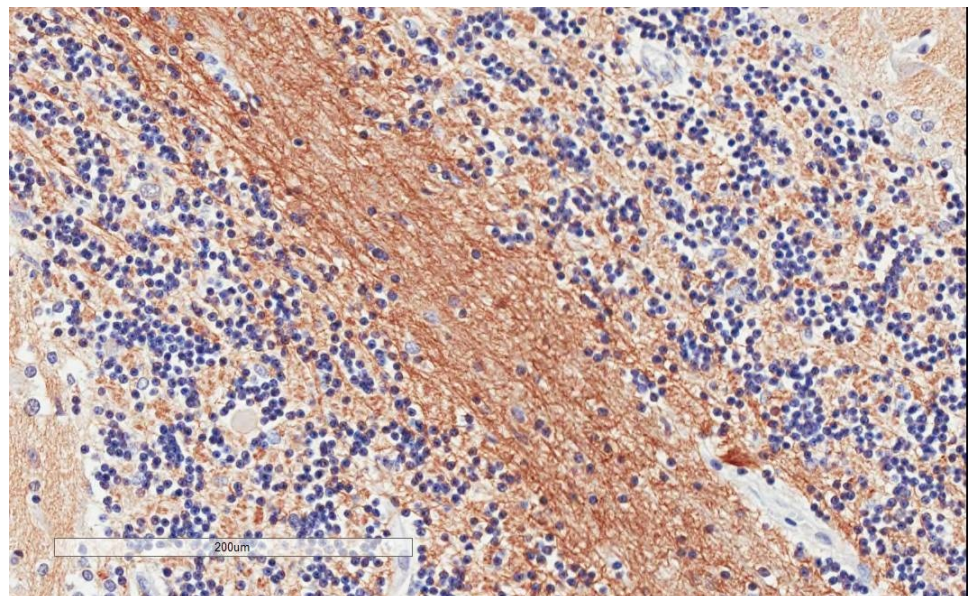
Accumulation of SNAP25 in mouse gustatory and somatosensory cortices in response to food and chemical stimulation.

Neuroscience. 2012 Aug 30;218:326-34.

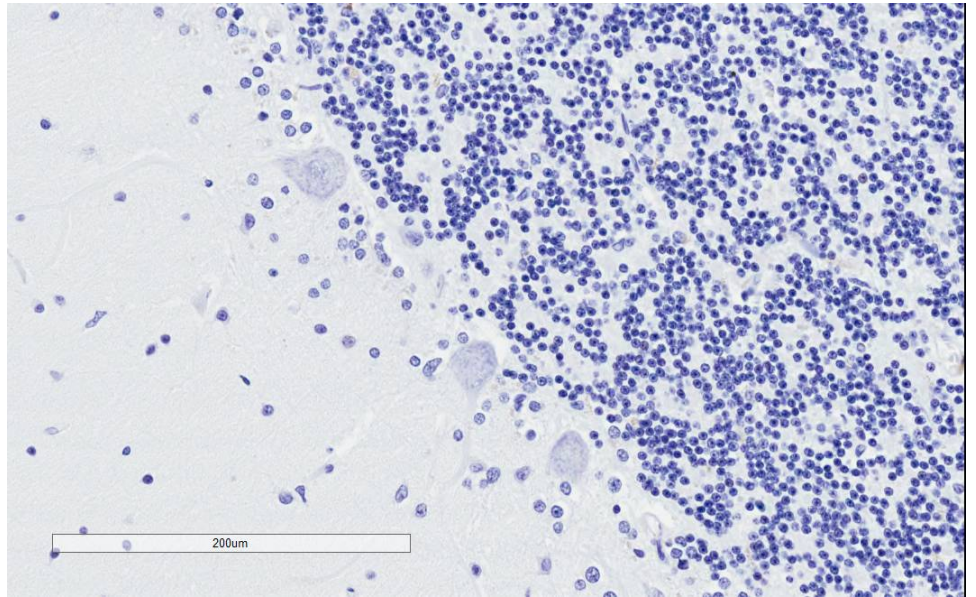
PMID: 22641083



EB06738 (0.03 μ g/ml) staining of Human Brain (Cerebellum) (A) and Mouse Brain (B lysates (35 μ g protein in RIPA buffer). Primary incubation was 1 hour. Detected by chemiluminescence.



EB06738 (1 μ g/ml) staining of paraffin embedded Human Cerebellum. Microwaved antigen retrieval with citrate buffer Ph 6, HRP-staining.



EB06738 Negative Control showing staining of paraffin embedded Human Cerebellum, with no primary antibody.