

UK Office

Everest Biotech Ltd

Cherwell Innovation Centre
77 Heyford Park
Upper Heyford
Oxfordshire
OX25 5HD
UK

Enquiries:

info@everestbiotech.com

Sales:

sales@everestbiotech.com

Tech support:

support@everestbiotech.com

Tel: +44 (0)1869 238326

www.everestbiotech.com

**Research Use Only. Not for
diagnostic or therapeutic use.**

EB07982 - Goat Anti-SMEK1 / KIAA2010 Antibody

Size: 100µg specific antibody in 200µl



Target Protein

Principal Names: SMEK homolog 1, suppressor of mek1 (Dictyostelium), KIAA2010, FLFL1, MSTP033, smk-1, smk1, SMEK homolog 1, suppressor of mek1

Official Symbol: SMEK1

Accession Number(s): NP_115949.3

Human GeneID(s): [55671](#)

Non-Human GeneID(s): 68734 (mouse), 314388 (rat)

Immunogen

Peptide with sequence C-EQQRERQDNPKLD, from the internal region of the protein sequence according to NP_115949.3.

Please note the [peptide](#) is available for sale.

Purification and Storage

Purified from goat serum by ammonium sulphate precipitation followed by antigen affinity chromatography using the immunizing peptide.

Supplied at 0.5 mg/ml in Tris saline, 0.02% sodium azide, pH7.3 with 0.5% bovine serum albumin.

Aliquot and store at -20°C. Minimize freezing and thawing.

Applications Tested

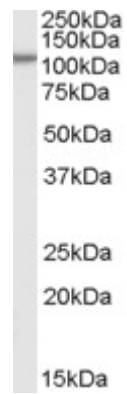
Peptide ELISA: antibody detection limit dilution 1:16000.

Western blot: Approx 110kDa band observed in Human Pancreas lysates (calculated MW of 93.9kDa according to NP_115949.3). In transfected HEK293 transiently expressing SMEK1 a band of approx. 95kDa is observed. This band is not observed in the non-transfected HEK293. Recommended concentration: 0.3-1µg/ml.

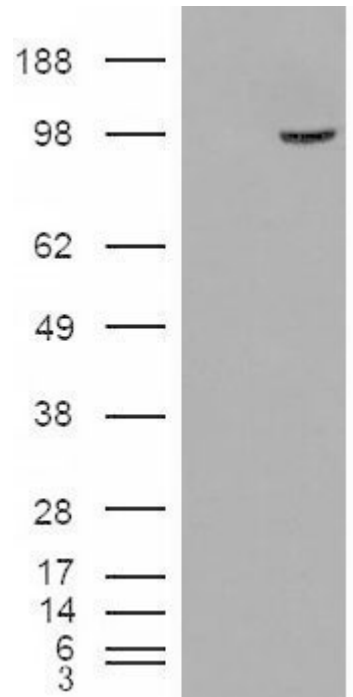
Species Reactivity

Tested: Human

Expected from sequence similarity: Human, Mouse, Rat, Dog



EB07982 (0.3µg/ml) staining of Human Pancreas lysate (35µg protein in RIPA buffer). Primary incubation was 1 hour. Detected by chemiluminescence.



HEK293 overexpressing SMEK1 (RC221040) and probed with EB07982 (mock transfection in first lane), tested by Origene.