

UK Office

Everest Biotech Ltd

Cherwell Innovation Centre
77 Heyford Park
Upper Heyford
Oxfordshire
OX25 5HD
UK

Enquiries:

info@everestbiotech.com

Sales:

sales@everestbiotech.com

Tech support:

support@everestbiotech.com

Tel: +44 (0)1869 238326

www.everestbiotech.com

**Research Use Only. Not for
diagnostic or therapeutic use.**

EB07480 - Goat Anti-SLC7A11 Antibody

Size: 100µg specific antibody in 200µl



Target Protein

Principal Names: SLC7A11, solute carrier family 7, (cationic amino acid transporter, y+ system) member 11, CCBP1, xCT, cystine/glutamate transporter

Official Symbol: SLC7A11

Accession Number(s): NP_055146.1

Human GeneID(s): [23657](#)

Immunogen

Peptide with sequence C-KGQTQNFKDAFSGRD, from the internal region of the protein sequence according to NP_055146.1.

Please note the [peptide](#) is available for sale.

Purification and Storage

Purified from goat serum by ammonium sulphate precipitation followed by antigen affinity chromatography using the immunizing peptide.

Supplied at 0.5 mg/ml in Tris saline, 0.02% sodium azide, pH7.3 with 0.5% bovine serum albumin.

Aliquot and store at -20°C. Minimize freezing and thawing.

Applications Tested

Peptide ELISA: antibody detection limit dilution 1:128000.

Western blot: Approx 50kDa band observed in Human Spleen lysates (calculated MW of 55.4kDa according to NP_055146.1). Recommended concentration: 0.02-0.06µg/ml. Primary incubation was 1 hour. A customer found positive results in WB on Rat spinal cord.

IHC: Paraffin embedded Human Placenta and Kidney. Recommended concentration: 3.75µg/ml.

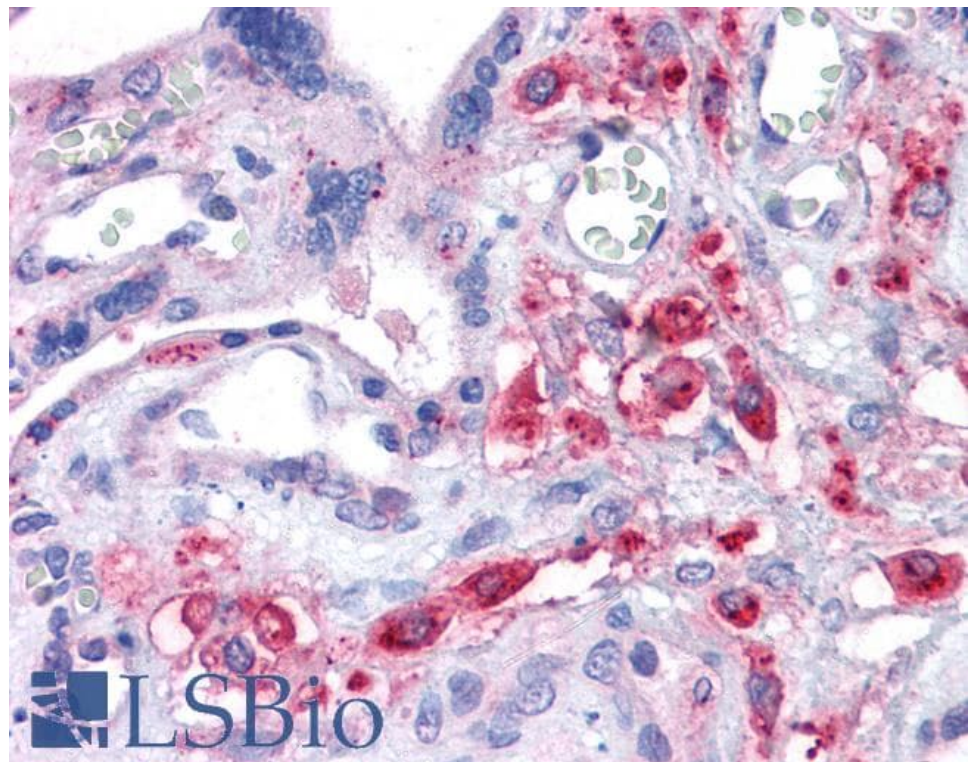
Species Reactivity

Tested: Human, Rat

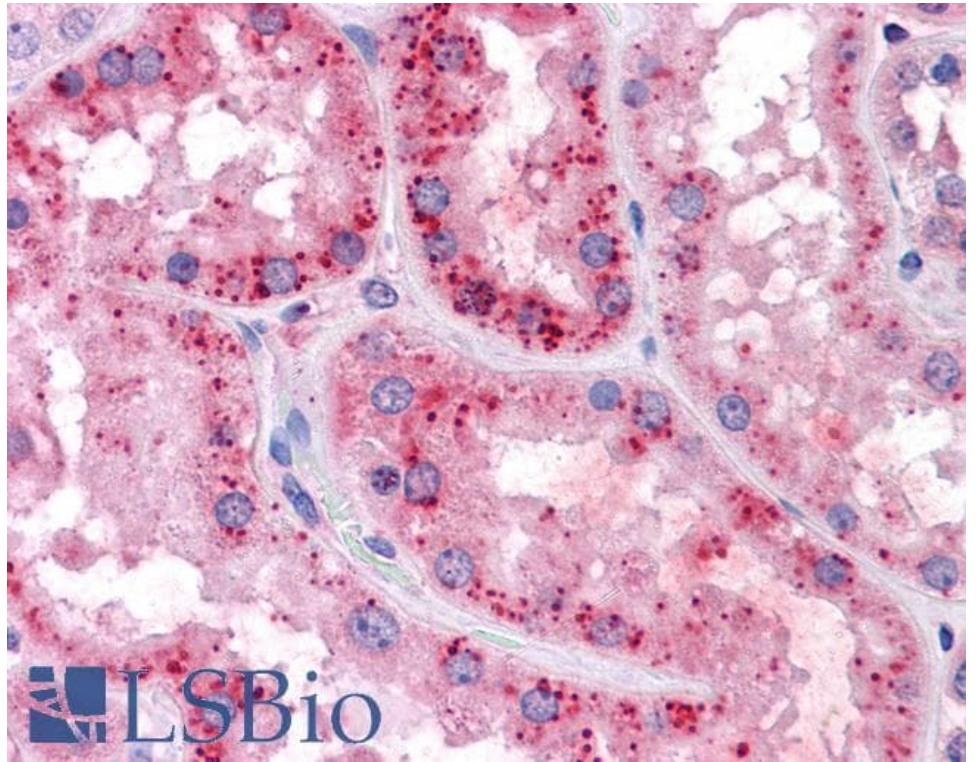
Expected from sequence similarity: Human



EB07480 (0.02 μ g/ml) staining of Human Spleen lysate (35 μ g protein in RIPA buffer). Detected by chemiluminescence.



EB07480 (3.75 μ g/ml) staining of paraffin embedded Human Placenta. Steamed antigen retrieval with citrate buffer pH 6, AP-staining.



EB07480 (3.75µg/ml) staining of paraffin embedded Human Kidney. Steamed antigen retrieval with citrate buffer pH 6, AP-staining.