

## UK Office

### Everest Biotech Ltd

Cherwell Innovation Centre  
77 Heyford Park  
Upper Heyford  
Oxfordshire  
OX25 5HD  
UK

Enquiries:

[info@everestbiotech.com](mailto:info@everestbiotech.com)

Sales:

[sales@everestbiotech.com](mailto:sales@everestbiotech.com)

Tech support:

[support@everestbiotech.com](mailto:support@everestbiotech.com)

Tel: +44 (0)1869 238326

[www.everestbiotech.com](http://www.everestbiotech.com)

**Research Use Only. Not for  
diagnostic or therapeutic use.**

## EB08816 - Goat Anti-SLC22A17 Antibody

Size: 100µg specific antibody in 200µl



### Target Protein

**Principal Names:** SLC22A17, solute carrier family 22, member 17, BOCT, BOIT, NGALR, hBOIT, NGAL receptor, neutrophil gelatinase-associated lipocalin receptor, potent brain type organic ion transporter, solute carrier family 22 (organic cation transporter), member 17

**Official Symbol:** SLC22A17

**Accession Number(s):** NP\_065105.2; NP\_057693.3

**Human GeneID(s):** [51310](#)

**Non-Human GeneID(s):** 59049 (mouse), 305886 (rat)

**Important Comments:** This antibody is expected to recognize both reported isoforms NP\_065105.2 and NP\_057693.3).

### Immunogen

Peptide with sequence C-PETKRKLLPEVLRD, from the internal region of the protein sequence according to NP\_065105.2; NP\_057693.3.

Please note the [peptide](#) is available for sale.

### Purification and Storage

Purified from goat serum by ammonium sulphate precipitation followed by antigen affinity chromatography using the immunizing peptide.

Supplied at 0.5 mg/ml in Tris saline, 0.02% sodium azide, pH7.3 with 0.5% bovine serum albumin.

Aliquot and store at -20°C. Minimize freezing and thawing.

### Applications Tested

**Peptide ELISA:** antibody detection limit dilution 1:64000.

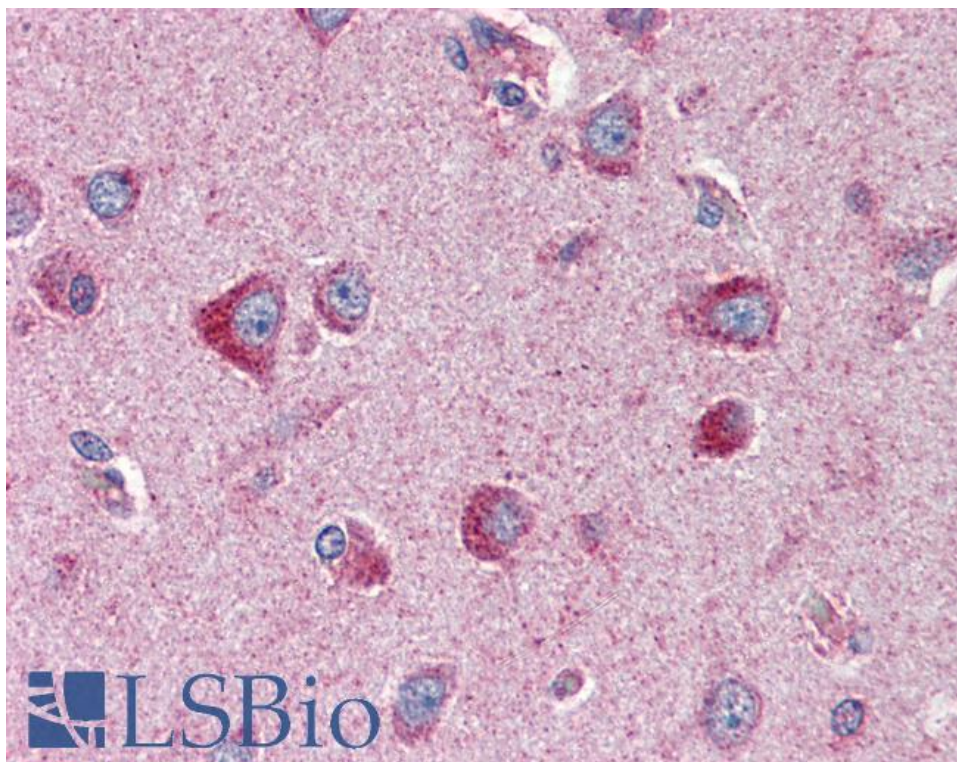
**Western blot:** Preliminary experiments gave an approx 150kDa band in Human Cerebellum lysates after 0.1µg/ml antibody staining. Please note that currently we cannot find an explanation in the literature for the band we observe given the calculated size of 57.7kDa according to NP\_065105.2. The 150kDa band was successfully blocked by incubation with the immunizing peptide.

**IHC:** Paraffin embedded Human Brain (Cortex and Cerebellum). Recommended concentration: 2µg/ml.

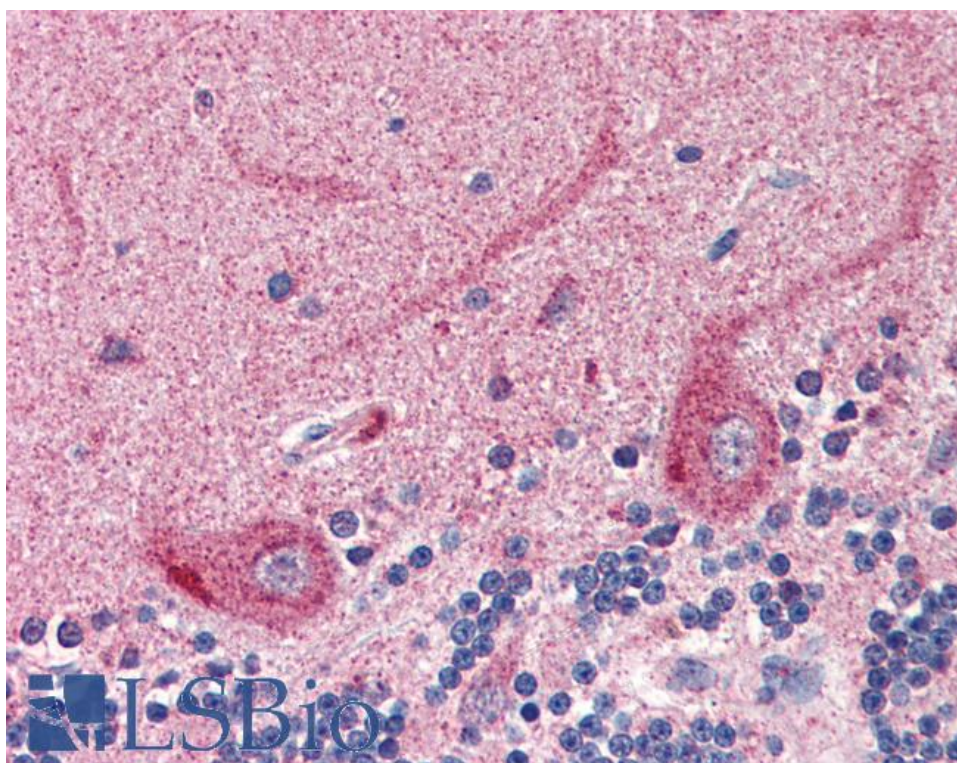
### Species Reactivity

**Tested:** Human

**Expected from sequence similarity:** Human, Mouse, Rat, Dog, Cow



EB08816 (2µg/ml) staining of paraffin embedded Human Cortex. Steamed antigen retrieval with citrate buffer pH 6, AP-staining.



EB08816 (2µg/ml) staining of paraffin embedded Human Cerebellum. Steamed antigen retrieval with citrate buffer pH 6, AP-staining.