

UK Office

Everest Biotech Ltd

Cherwell Innovation Centre
77 Heyford Park
Upper Heyford
Oxfordshire
OX25 5HD
UK

Enquiries:

info@everestbiotech.com

Sales:

sales@everestbiotech.com

Tech support:

support@everestbiotech.com

Tel: +44 (0)1869 238326

www.everestbiotech.com

**Research Use Only. Not for
diagnostic or therapeutic use.**

EB06973 - Goat Anti-SIRT3 Antibody

Size: 100µg specific antibody in 200µl



Target Protein

Principal Names: SIRT3, sirtuin (silent mating type information regulation 2 homolog) 3 (S. cerevisiae), HGNC:14931, SIR2L3, mitochondrial nicotinamide adenine dinucleotide-dependent deacetylase, silent mating type information regulation 2, S.cerevisiae, homolog 3, sir2-like 3, sirtuin (silent mating type information regulation 2, S.cerevisiae, homolog) 3, sirtuin 3, sirtuin type 3

Official Symbol: SIRT3

Accession Number(s): NP_036371.1, NP_001017524.1

Human GeneID(s): [23410](#)

Important Comments: This antibody is expected to recognize both reported isoforms (NP_036371.1 and NP_001017524.1).

Immunogen

Peptide with sequence C-QRETGKLDGPDK, from the C Terminus of the protein sequence according to NP_036371.1, NP_001017524.1.

Please note the [peptide](#) is available for sale.

Purification and Storage

Purified from goat serum by ammonium sulphate precipitation followed by antigen affinity chromatography using the immunizing peptide.

Supplied at 0.5 mg/ml in Tris saline, 0.02% sodium azide, pH7.3 with 0.5% bovine serum albumin.

Aliquot and store at -20°C. Minimize freezing and thawing.

Applications Tested

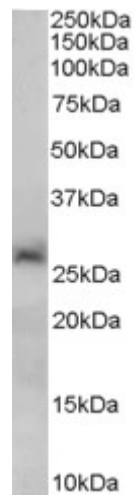
Peptide ELISA: antibody detection limit dilution 1:128000.

Western blot: Approx 28kDa band observed in Human Liver lysates (calculated MW of 28.6kDa according to NP_001017524.1). Recommended concentration: 0.1-0.3µg/ml.

Species Reactivity

Tested: Human

Expected from sequence similarity: Human



EB06973 (0.2 μ g/ml) staining of Human Liver lysate (35 μ g protein in RIPA buffer). Primary incubation was 1 hour.
Detected by chemiluminescence.