

## UK Office

### Everest Biotech Ltd

Cherwell Innovation Centre  
77 Heyford Park  
Upper Heyford  
Oxfordshire  
OX25 5HD  
UK

Enquiries:

[info@everestbiotech.com](mailto:info@everestbiotech.com)

Sales:

[sales@everestbiotech.com](mailto:sales@everestbiotech.com)

Tech support:

[support@everestbiotech.com](mailto:support@everestbiotech.com)

Tel: +44 (0)1869 238326

[www.everestbiotech.com](http://www.everestbiotech.com)

**Research Use Only. Not for  
diagnostic or therapeutic use.**

## EB10569 - Goat Anti-SIM2 Antibody

Size: 100µg specific antibody in 200µl



### Target Protein

**Principal Names:** SIM2, single-minded homolog 2 (Drosophila), MGC119447, SIM, bHLHe15, OTTHUMP00000109044, class E basic helix-loop-helix protein 15, single-minded homolog 2, single-minded homolog 2, short isoform

**Official Symbol:** SIM2

**Accession Number(s):** NP\_005060.1; NP\_033664.2

**Human GeneID(s):** [6493](#)

**Non-Human GeneID(s):** 20465 (mouse), 304071 (rat)

**Important Comments:** This antibody is expected to recognize all reported isoforms (NP\_005060.1; NP\_033664.2).

### Immunogen

Peptide with sequence C-SDLLYTPSYS, from the internal region of the protein sequence according to NP\_005060.1; NP\_033664.2.

Please note the [peptide](#) is available for sale.

### Purification and Storage

Purified from goat serum by ammonium sulphate precipitation followed by antigen affinity chromatography using the immunizing peptide.

Supplied at 0.5 mg/ml in Tris saline, 0.02% sodium azide, pH7.3 with 0.5% bovine serum albumin.

Aliquot and store at -20°C. Minimize freezing and thawing.

### Applications Tested

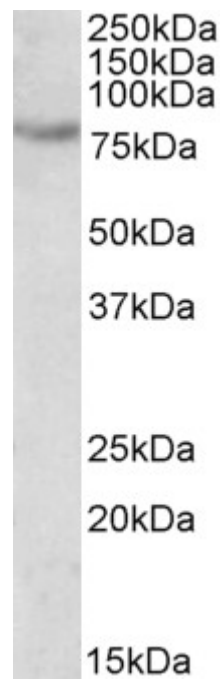
**Peptide ELISA:** antibody detection limit dilution 1:1000.

**Western blot:** Approx 80kDa band observed in fetal Mouse Kidney lysates (calculated MW of 73.2kDa according to Human NP\_005060.1) and 72.5kDa according to Mouse NP\_035507.2. Recommended concentration: 0.5-2µg/ml.

### Species Reactivity

**Tested:** Mouse

**Expected from sequence similarity:** Human, Mouse, Rat



EB10569 (0.5 $\mu$ g/ml) staining of fetal Mouse kidney lysate (35 $\mu$ g protein in RIPA buffer). Primary incubation was 1 hour. Detected by chemiluminescence.