



UK Office

Everest Biotech Ltd

Cherwell Innovation Centre
77 Heyford Park
Upper Heyford
Oxfordshire
OX25 5HD
UK

Enquiries:

info@everestbiotech.com

Sales:

sales@everestbiotech.com

Tech support:

support@everestbiotech.com

Tel: +44 (0)1869 238326

www.everestbiotech.com

**Research Use Only. Not for
diagnostic or therapeutic use.**

EB05292-B - Goat Anti-SIAH1, Biotinylated Antibody

Size: 100µg specific antibody in 200µl



Target Protein

Principal Names: SIAH1, siah E3 ubiquitin protein ligase 1, SIAH1A, seven in absentia homolog 1, siah-1a, HUMSIAH, FLJ08065

Official Symbol: SIAH1

Accession Number(s): NP_003022.3; NP_001006611.1

Human GeneID(s): [6477](#)

Non-Human GeneID(s): 20437 (mouse), 140941 (rat)

Important Comments: This antibody is expected to recognize both reported isoforms (NP_003022.3; NP_001006611.1).

Immunogen

Peptide with sequence SRQTATALPTGTSKC., from the N Terminus of the protein sequence according to NP_003022.3; NP_001006611.1.

Please note the [peptide](#) is available for sale.

Purification and Storage

Purified from goat serum by ammonium sulphate precipitation followed by antigen affinity chromatography using the immunizing peptide.

Supplied at 0.5 mg/ml in Tris saline, 0.02% sodium azide, pH7.3 with 0.5% bovine serum albumin.

Aliquot and store at -20°C. Minimize freezing and thawing.

Applications Tested

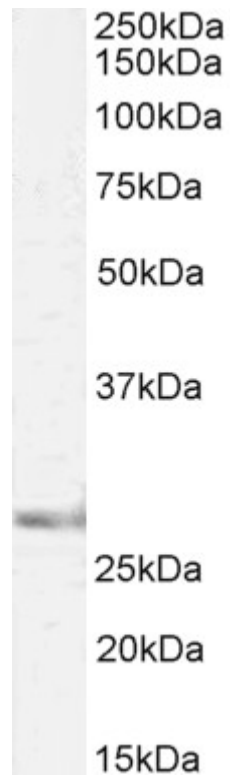
Peptide ELISA: antibody detection limit dilution 1:16000.

Western blot: Approx 28kDa band observed in Mouse Brain lysates (calculated MW of 31.1kDa according to Mouse NP_033198.1). See non-biotinylated parental product's datasheet for further QC data. Recommended concentration: 1-3µg/ml.

Species Reactivity

Tested: Human, Mouse, Rat

Expected from sequence similarity: Human, Mouse, Rat, Dog, Cow



Biotinylated EB05292 (2µg/ml) staining of Mouse Brain lysate (35µg protein in RIPA buffer), exactly mirroring its parental non-biotinylated product. Primary incubation was 1 hour. Detected by chemiluminescence, using streptavidin-HRP and using NAP blocker as a substitute for skimmed milk.