

UK Office

Everest Biotech Ltd

Cherwell Innovation Centre
77 Heyford Park
Upper Heyford
Oxfordshire
OX25 5HD
UK

Enquiries:

info@everestbiotech.com

Sales:

sales@everestbiotech.com

Tech support:

support@everestbiotech.com

Tel: +44 (0)1869 238326

www.everestbiotech.com

**Research Use Only. Not for
diagnostic or therapeutic use.**

EB08577 - Goat Anti-SERPINB6 Antibody

Size: 100µg specific antibody in 200µl



Target Protein

Principal Names: SERPINB6, serpin peptidase inhibitor, clade B (ovalbumin), member 6, CAP, DKFZp686l04222, MGC111370, MSTP057, PI6, PTI, protease inhibitor 6 (placental thrombin inhibitor), serine (or cysteine) proteinase inhibitor, clade B (ovalbumin), member 6

Official Symbol: SERPINB6

Accession Number(s): NP_004559.4

Human GeneID(s): [5269](#)

Immunogen

Peptide with sequence C-NWDEQFDKENTEER, from the internal region of the protein sequence according to NP_004559.4.

Please note the [peptide](#) is available for sale.

Purification and Storage

Purified from goat serum by ammonium sulphate precipitation followed by antigen affinity chromatography using the immunizing peptide.

Supplied at 0.5 mg/ml in Tris saline, 0.02% sodium azide, pH7.3 with 0.5% bovine serum albumin.

Aliquot and store at -20°C. Minimize freezing and thawing.

Applications Tested

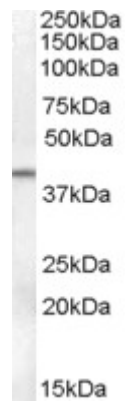
Peptide ELISA: antibody detection limit dilution 1:128000.

Western blot: Approx 40kDa band observed in Human Ovary lysates (calculated MW of 42.6kDa according to NP_004559.4). Recommended concentration: 0.1-.3µg/ml.

Species Reactivity

Tested: Human

Expected from sequence similarity: Human



EB08577 (0.1µg/ml) staining of Human Ovary lysate (35µg protein in RIPA buffer). Primary incubation was 1 hour. Detected by chemiluminescence.