

UK Office

Everest Biotech Ltd

Cherwell Innovation Centre
77 Heyford Park
Upper Heyford
Oxfordshire
OX25 5HD
UK

Enquiries:

info@everestbiotech.com

Sales:

sales@everestbiotech.com

Tech support:

support@everestbiotech.com

Tel: +44 (0)1869 238326

www.everestbiotech.com

**Research Use Only. Not for
diagnostic or therapeutic use.**

EB08545 - Goat Anti-SERPINA6 / CBG Antibody

Size: 100µg specific antibody in 200µl



Target Protein

Principal Names: SERPINA6, serpin peptidase inhibitor, clade A (alpha-1 antiproteinase, antitrypsin), member 6, CBG, corticosteroid binding globulin, serine (or cysteine) proteinase inhibitor, clade A (alpha-1 antiproteinase, antitrypsin), member 6, transcortin

Official Symbol: SERPINA6

Accession Number(s): NP_001747.2

Human GeneID(s): [866](#)

Immunogen

Peptide with sequence C-DLFTNQANFSRIT, from the internal region of the protein sequence according to NP_001747.2.

Please note the [peptide](#) is available for sale.

Purification and Storage

Purified from goat serum by ammonium sulphate precipitation followed by antigen affinity chromatography using the immunizing peptide.

Supplied at 0.5 mg/ml in Tris saline, 0.02% sodium azide, pH7.3 with 0.5% bovine serum albumin.

Aliquot and store at -20°C. Minimize freezing and thawing.

Applications Tested

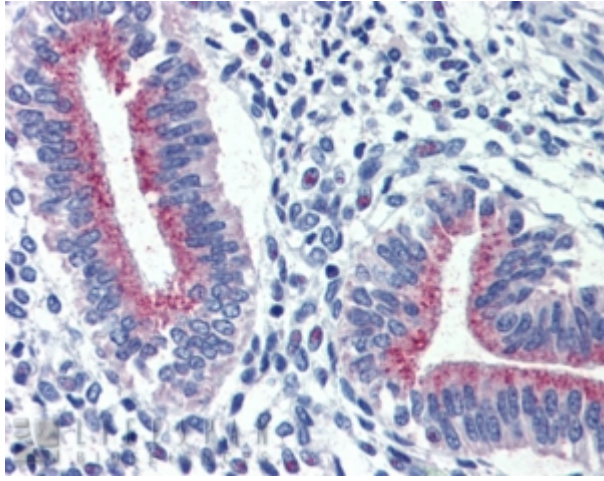
Peptide ELISA: antibody detection limit dilution 1:1000.

IHC: In paraffin embedded Human Uterus shows brush border staining of endometrial glands. Recommended concentration, 3-6µg/ml.

Species Reactivity

Tested: Human

Expected from sequence similarity: Human



EB08545 (3.8µg/ml) staining of paraffin embedded Human Uterus. Steamed antigen retrieval with citrate buffer pH 6, AP-staining.