

UK Office

Everest Biotech Ltd

Cherwell Innovation Centre
77 Heyford Park
Upper Heyford
Oxfordshire
OX25 5HD
UK

Enquiries:

info@everestbiotech.com

Sales:

sales@everestbiotech.com

Tech support:

support@everestbiotech.com

Tel: +44 (0)1869 238326

www.everestbiotech.com

**Research Use Only. Not for
diagnostic or therapeutic use.**

EB08624 - Goat Anti-SERPINA10 / ZPI Antibody

Size: 100µg specific antibody in 200µl



Target Protein

Principal Names: SERPINA10, ZPI, serpin peptidase inhibitor, clade A (alpha-1 antiproteinase, antitrypsin), member 10, PZI, protein Z-dependent protease inhibitor, protein Z-dependent protease inhibitorprecursor, serine (or cysteine) proteinase inhibitor, clade A (alpha-1 antiproteinase, antitrypsin), member 10

Official Symbol: SERPINA10

Accession Number(s): NP_001094077.1; NP_057270.1

Human GeneID(s): [51156](#)

Important Comments: This antibody is expected to recognize the isoforms (NP_001094077.1; NP_057270.1) that are showing 100% sequence identity.

Immunogen

Peptide with sequence QSPETPAPQNQTSR-C, from the N Terminus (near) of the protein sequence according to NP_001094077.1; NP_057270.1.

Please note the [peptide](#) is available for sale.

Purification and Storage

Purified from goat serum by ammonium sulphate precipitation followed by antigen affinity chromatography using the immunizing peptide.

Supplied at 0.5 mg/ml in Tris saline, 0.02% sodium azide, pH7.3 with 0.5% bovine serum albumin.

Aliquot and store at -20°C. Minimize freezing and thawing.

Applications Tested

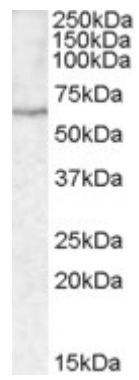
Peptide ELISA: antibody detection limit dilution 1:16000.

Western blot: Approx 65kDa band observed in Human Liver lysates (calculated MW of 50.7kDa according to NP_057270.1). The observed molecular weight corresponds to earlier findings in literature with different antibodies (Han et al, jBlood. 2000 Nov 1;96(9):3049-55; PMID: 11049983). Recommended concentration: 0.5-1.5µg/ml. Primary incubation was 1 hour.

Species Reactivity

Tested: Human

Expected from sequence similarity: Human



EB08624 (0.5µg/ml) staining of Human Liver lysate (35µg protein in RIPA buffer). Detected by chemiluminescence.