

UK Office

Everest Biotech Ltd

Cherwell Innovation Centre
77 Heyford Park
Upper Heyford
Oxfordshire
OX25 5HD
UK

Enquiries:

info@everestbiotech.com

Sales:

sales@everestbiotech.com

Tech support:

support@everestbiotech.com

Tel: +44 (0)1869 238326

www.everestbiotech.com

**Research Use Only. Not for
diagnostic or therapeutic use.**

EB05413 - Goat Anti-Septin 3 Antibody

Size: 100µg specific antibody in 200µl



Target Protein

Principal Names: SEPT3, septin 3, SEP3, CTA-250D10.3, MGC133218, bK250D10.3, OTTHUMP00000028742, neuronal-specific septin 3, G-Septin

Official Symbol: SEPT3

Accession Number(s): NP_663786.1; NP_061979.3

Human GeneID(s): [55964](#)

Non-Human GeneID(s): 24050 (mouse)

Important Comments: This antibody is expected to recognize both reported isoforms according to NP_663786.1 and NP_061979.3.

Immunogen

Peptide with sequence SELVPEPRPKPA-C, from the N Terminus of the protein sequence according to NP_663786.1; NP_061979.3.

Please note the [peptide](#) is available for sale.

Purification and Storage

Purified from goat serum by ammonium sulphate precipitation followed by antigen affinity chromatography using the immunizing peptide.

Supplied at 0.5 mg/ml in Tris saline, 0.02% sodium azide, pH7.3 with 0.5% bovine serum albumin.

Aliquot and store at -20°C. Minimize freezing and thawing.

Applications Tested

Peptide ELISA: antibody detection limit dilution 1:32000.

Western blot: Approx 40kDa band seen in Human Brain lysate. Recommended for use at 0.5-2µg/ml.

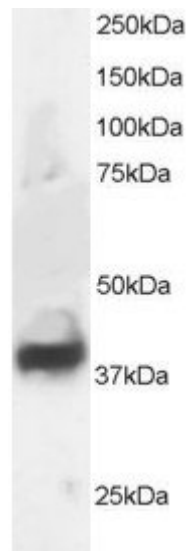
IHC: Paraffin embedded Human Brain (Cortex) and (Cerebellum) and Testis.

Recommended concentration: 3.75µg/ml.

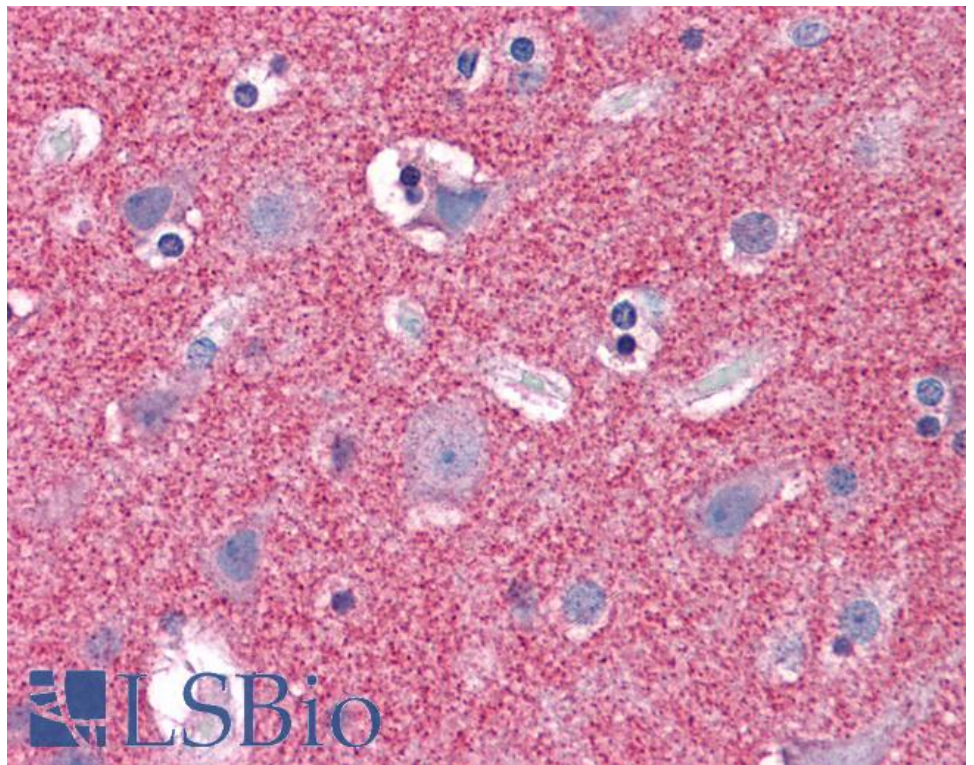
Species Reactivity

Tested: Human

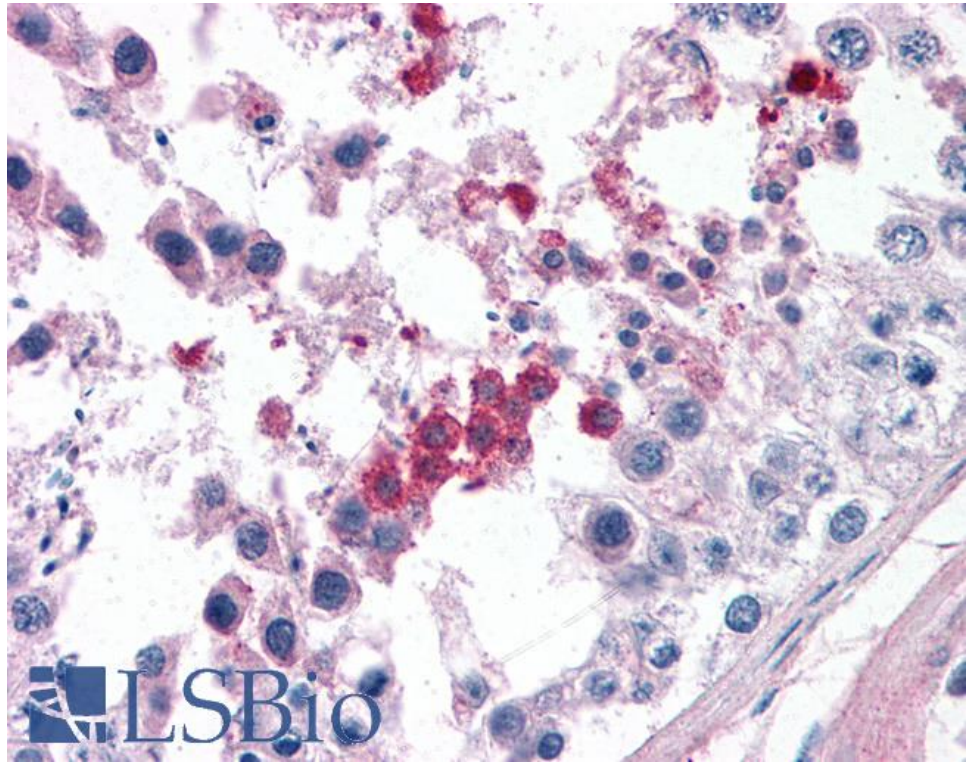
Expected from sequence similarity: Human, Mouse, Rat, Dog, Pig, Cow



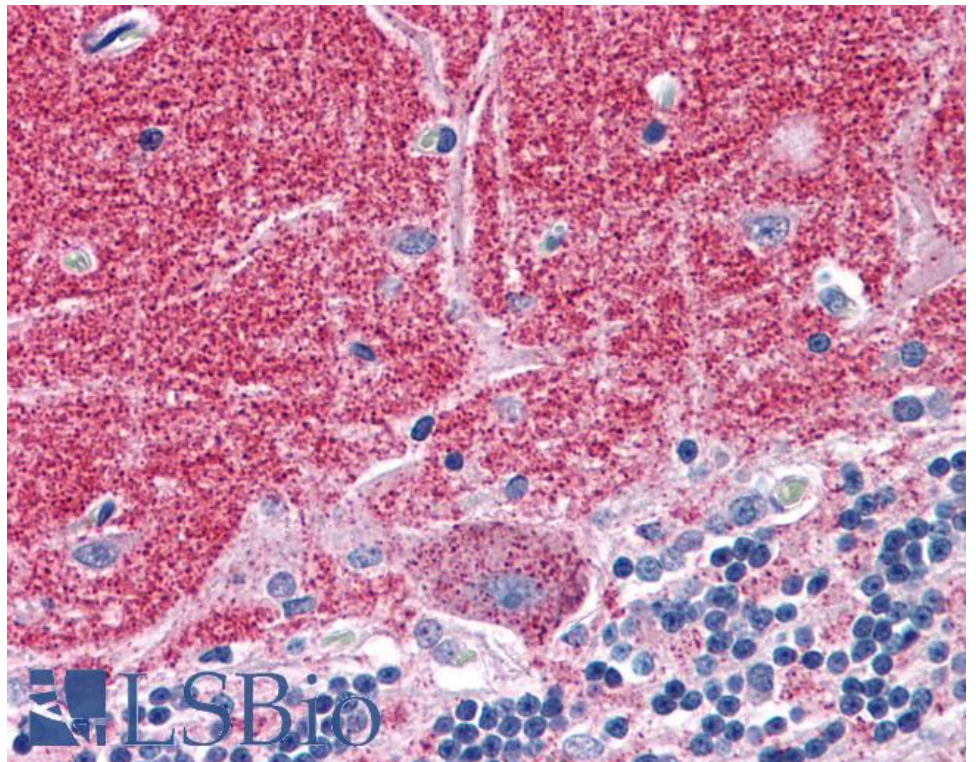
EB05413 staining (1 μ g/ml) of Human Brain lysate (RIPA buffer, 30 μ g total protein per lane). Primary incubated for 1 hour. Detected by chemiluminescence.



EB05413 (3.75 μ g/ml) staining of paraffin embedded Human Cortex. Steamed antigen retrieval with citrate buffer pH 6, AP-staining.



EB05413 (3.75µg/ml) staining of paraffin embedded Human Testis. Steamed antigen retrieval with citrate buffer pH 6, AP-staining.



EB05413 (3.75µg/ml) staining of paraffin embedded Human Cerebellum. Steamed antigen retrieval with citrate buffer pH 6, AP-staining.